



[Go to Product page](#)

Datasheet for ABIN7267662
anti-HRH3 antibody (AA 250-350)

3 Images

Overview

Quantity:	100 µL
Target:	HRH3
Binding Specificity:	AA 250-350
Reactivity:	Human
Host:	Rabbit
Clonality:	Polyclonal
Conjugate:	This HRH3 antibody is un-conjugated
Application:	Western Blotting (WB), Immunofluorescence (IF)

Product Details

Purpose:	HRH3 Rabbit pAb
Immunogen:	A synthetic peptide corresponding to a sequence within amino acids 250-350 of human HRH3 (NP_009163.2).
Sequence:	PSPPPPGCW GCWQKGHGEA MPLHRYGVGE AAVGAEAGEA TLGGGGGGGS VASPTSSSGS SSRGTERPRS LKRGSKPSAS SASLEKRMKM VSQSFTQFR L
Isotype:	IgG
Cross-Reactivity:	Human, Mouse, Rat
Characteristics:	Polyclonal Antibodies
Purification:	Affinity purification

Target Details

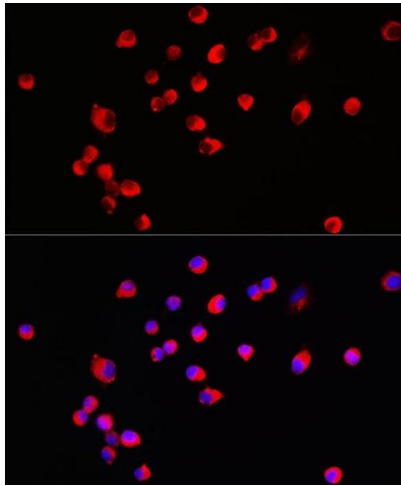
Target:	HRH3
Alternative Name:	HRH3 (HRH3 Products)
Background:	<p>Histamine is a ubiquitous messenger molecule released from mast cells, enterochromaffin-like cells, and neurons. Its various actions are mediated by histamine receptors H1, H2, H3 and H4. This gene encodes one of the histamine receptors (H3) which belongs to the family 1 of G protein-coupled receptors. It is an integral membrane protein and can regulate neurotransmitter release. This receptor can also increase voltage-dependent calcium current in smooth muscles and innervates the blood vessels and the heart in cardiovascular system.,HRH3,GPCR97,HH3R,Signal Transduction,G protein signaling,G-Protein-Coupled Receptors(GPCR),Neuroscience,HRH3</p>
Molecular Weight:	36kDa/40kDa/45kDa/47kDa/48kDa/49kDa
Gene ID:	11255
UniProt:	Q9Y5N1
Pathways:	cAMP Metabolic Process , Feeding Behaviour

Application Details

Application Notes:	WB,1:500 - 1:2000,IF,1:50 - 1:200
Restrictions:	For Research Use only

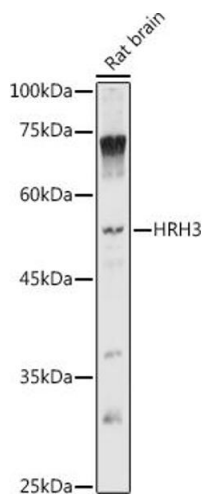
Handling

Format:	Liquid
Buffer:	PBS with 0.02 % sodium azide,50 % glycerol, pH 7.3.
Preservative:	Sodium azide
Precaution of Use:	This product contains Sodium azide: a POISONOUS AND HAZARDOUS SUBSTANCE which should be handled by trained staff only.
Storage:	-20 °C
Storage Comment:	Store at -20°C. Avoid freeze / thaw cycles.



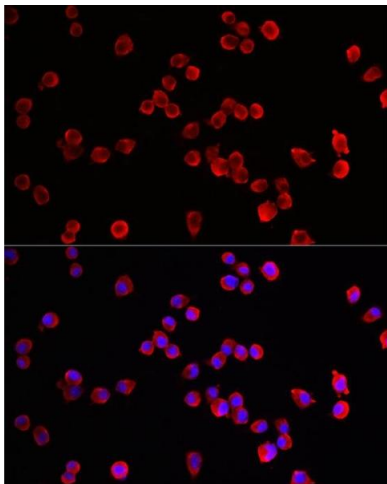
Immunofluorescence

Image 1. Immunofluorescence analysis of SH-SY5Y cells using HRH3 Rabbit pAb (ABIN7267662) at dilution of 1:100 (40x lens). Blue: DAPI for nuclear staining.



Western Blotting

Image 2. Western blot analysis of extracts of Rat brain, using HRH3 antibody (ABIN7267662) at 1:1000 dilution. Secondary antibody: HRP Goat Anti-Rabbit IgG (H+L) (ABIN1684268 and ABIN3020597) at 1:10000 dilution. Lysates/proteins: 25 µg per lane. Blocking buffer: 3 % nonfat dry milk in TBST. Detection: ECL Basic Kit (RM00020). Exposure time: 5s.



Immunofluorescence

Image 3. Immunofluorescence analysis of Neuro-2a cells using HRH3 Rabbit pAb (ABIN7267662) at dilution of 1:100 (40x lens). Blue: DAPI for nuclear staining.