

Datasheet for ABIN726770
anti-beta Expansin antibody (AA 10-110)[1 Image](#)[1 Publication](#)[Go to Product page](#)

Overview

Quantity:	100 µL
Target:	beta Expansin (EXPB2)
Binding Specificity:	AA 10-110
Reactivity:	Plant, Wheat
Host:	Rabbit
Clonality:	Polyclonal
Conjugate:	This beta Expansin antibody is un-conjugated
Application:	Western Blotting (WB), Immunofluorescence (Cultured Cells) (IF (cc)), Immunofluorescence (Paraffin-embedded Sections) (IF (p)), ELISA, Immunohistochemistry (Frozen Sections) (IHC (fro)), Immunohistochemistry (Paraffin-embedded Sections) (IHC (p))

Product Details

Immunogen:	KLH conjugated synthetic peptide derived from Triticum aestivum EXPB-2
Isotype:	IgG
Cross-Reactivity:	Plant
Cross-Reactivity (Details):	Triticum aestivum
Purification:	Purified by Protein A.

Target Details

Target:	beta Expansin (EXPB2)
---------	-----------------------

Target Details

Alternative Name:	EXPB-2 (EXPB2 Products)
Background:	<p>Synonyms: beta-expansin 2, expansin EXPB5, Q6QN86_WHEAT.</p> <p>Background: beta-expansin (EXBP2) may cause loosening and extension of plant cell walls by disrupting noncovalent bonding between cellulose microfibrils and matrix glucans. No enzymatic activity has been found Subcellular Location at Cell-wall bound. Belongs to the expansin family.</p>
UniProt:	Q6QN86

Application Details

Application Notes:	<p>WB 1:300-5000</p> <p>ELISA 1:500-1000</p> <p>IHC-P 1:200-400</p> <p>IHC-F 1:100-500</p> <p>IF(IHC-P) 1:50-200</p> <p>IF(IHC-F) 1:50-200</p> <p>IF(ICC) 1:50-200</p>
Restrictions:	For Research Use only

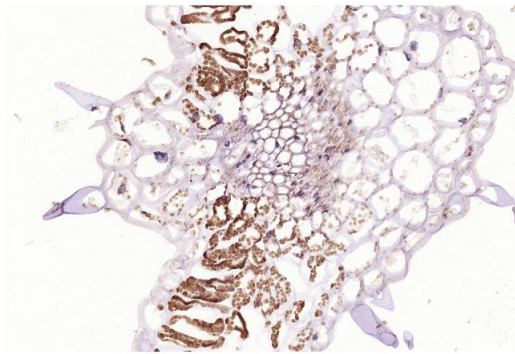
Handling

Format:	Liquid
Concentration:	1 µg/µL
Buffer:	0.01M TBS(pH 7.4) with 1 % BSA, 0.02 % Proclin300 and 50 % Glycerol.
Preservative:	ProClin
Precaution of Use:	This product contains ProClin: a POISONOUS AND HAZARDOUS SUBSTANCE, which should be handled by trained staff only.
Storage:	4 °C,-20 °C
Storage Comment:	Shipped at 4°C. Store at -20°C for one year. Avoid repeated freeze/thaw cycles.
Expiry Date:	12 months

Publications

Product cited in:	Tsuchiya, Satoh, Iwai: "Distribution of XTH, expansin, and secondary-wall-related CesA in floral
-------------------	--

and fruit abscission zones during fruit development in tomato (*Solanum lycopersicum*).\" in:
Frontiers in plant science, Vol. 6, pp. 323, (2015) ([PubMed](#)).



Immunohistochemistry (Paraffin-embedded Sections)

Image 1. Paraformaldehyde-fixed, paraffin embedded Tomato leaf, Antigen retrieval by microwave in sodium citrate buffer (pH6.0) , Block endogenous peroxidase by 3% hydrogen peroxide for 30 minutes, Blocking buffer (3% BSA) at RT for 30min, Antibody incubation with EXPB-2 Polyclonal Antibody, Unconjugated at 1:400 overnight at 4°C, *followed by conjugation to the secondary antibody (labeled with HRP) and DAB staining.*