



Datasheet for ABIN7267702

anti-HAT1 antibody



[Go to Product page](#)

6 Images

Overview

Quantity:	100 µL
Target:	HAT1
Reactivity:	Human
Host:	Rabbit
Clonality:	Monoclonal
Conjugate:	This HAT1 antibody is un-conjugated
Application:	Western Blotting (WB), Immunohistochemistry (IHC), Immunofluorescence (IF)

Product Details

Purpose:	KAT1/HAT1 Rabbit mAb
Immunogen:	A synthesized peptide derived from human KAT1/HAT1
Isotype:	IgG
Cross-Reactivity:	Human, Mouse, Rat
Characteristics:	Monoclonal Antibodies
Purification:	Affinity purification

Target Details

Target:	HAT1
Alternative Name:	HAT1 (HAT1 Products)
Background:	The protein encoded by this gene is a type B histone acetyltransferase (HAT) that is involved in

Target Details

the rapid acetylation of newly synthesized cytoplasmic histones, which are in turn imported into the nucleus for de novo deposition onto nascent DNA chains. Histone acetylation, particularly of histone H4, plays an important role in replication-dependent chromatin assembly.

Specifically, this HAT can acetylate soluble but not nucleosomal histone H4 at lysines 5 and 12, and to a lesser degree, histone H2A at lysine 5. Alternatively spliced transcript variants have been identified for this gene. [provided by RefSeq, Jun 2009],KAT1,Cell Biology & Developmental Biology,Epigenetic writers and erasers of core Histones,Epigenetic writers and erasers of core Histones_Acetylation,Epigenetics & Nuclear Signaling,Notch Signaling Pathway,HAT1

Molecular Weight:	45kDa
-------------------	-------

Gene ID:	8520
----------	------

UniProt:	O14929
----------	------------------------

Application Details

Application Notes:	WB,1:500 - 1:2000,IHC,1:50 - 1:200,IF,1:50 - 1:200
--------------------	--

Restrictions:	For Research Use only
---------------	-----------------------

Handling

Format:	Liquid
---------	--------

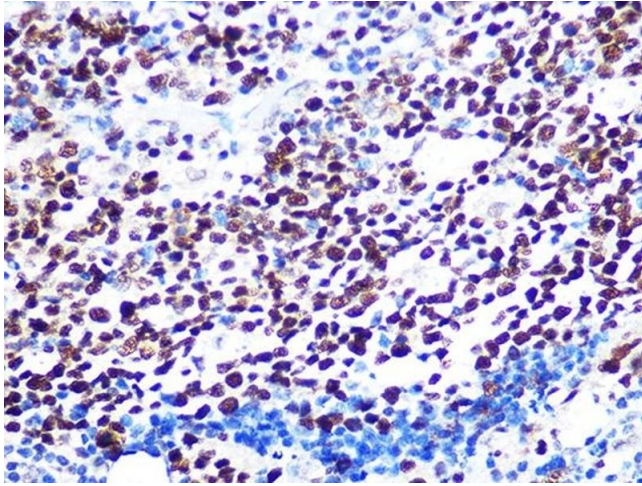
Buffer:	PBS with 0.02 % sodium azide,0.05 % BSA,50 % glycerol, pH 7.3.
---------	--

Preservative:	Sodium azide
---------------	--------------

Precaution of Use:	This product contains Sodium azide: a POISONOUS AND HAZARDOUS SUBSTANCE which should be handled by trained staff only.
--------------------	--

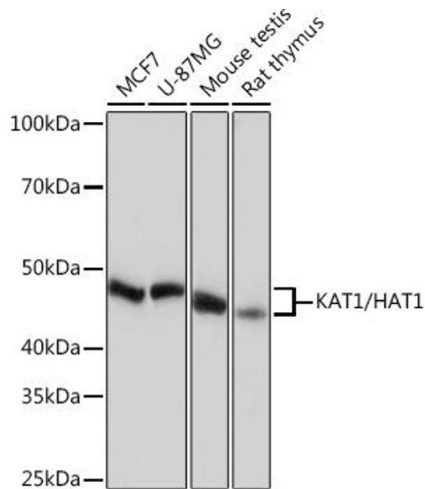
Storage:	-20 °C
----------	--------

Storage Comment:	Store at -20°C. Avoid freeze / thaw cycles.
------------------	---



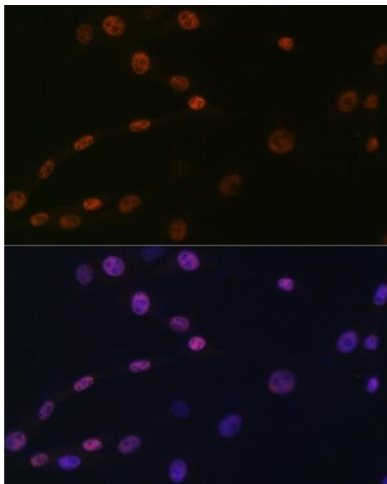
Immunohistochemistry

Image 1. Immunohistochemistry of paraffin-embedded human appendix using K/H Rabbit mAb (ABIN7267702) at dilution of 1:100 (40x lens). Perform microwave antigen retrieval with 10 mM PBS buffer pH 7.2 before commencing with IHC staining protocol.



Western Blotting

Image 2. Western blot analysis of extracts of various cell lines, using K/H Rabbit mAb (ABIN7267702) at 1:1000 dilution. Secondary antibody: HRP Goat Anti-Rabbit IgG (H+L) (ABIN1684268 and ABIN3020597) at 1:10000 dilution. Lysates/proteins: 25 µg per lane. Blocking buffer: 3 % nonfat dry milk in TBST. Detection: ECL Basic Kit (RM00020). Exposure time: 10s.



Immunofluorescence

Image 3. Immunofluorescence analysis of NIH-3T3 cells using K/H Rabbit mAb (ABIN7267702) at dilution of 1:100 (40x lens). Blue: DAPI for nuclear staining.

Please check the [product details page](#) for more images. Overall 6 images are available for ABIN7267702.