

Datasheet for ABIN7267705
anti-HIST1H3A antibody[Go to Product page](#)

6 Images

Overview

Quantity:	100 µL
Target:	HIST1H3A
Reactivity:	Human
Host:	Rabbit
Clonality:	Monoclonal
Conjugate:	This HIST1H3A antibody is un-conjugated
Application:	Western Blotting (WB), Immunohistochemistry (IHC), Immunofluorescence (IF), Chromatin Immunoprecipitation (ChIP)

Product Details

Purpose:	Histone H3 Rabbit mAb
Immunogen:	A synthesized peptide derived from human Histone H3
Isotype:	IgG
Cross-Reactivity:	Human, Mouse, Rat
Characteristics:	Monoclonal Antibodies
Purification:	Affinity purification

Target Details

Target:	HIST1H3A
Alternative Name:	HIST1H3A (HIST1H3A Products)

Target Details

Background: Histones are basic nuclear proteins that are responsible for the nucleosome structure of the chromosomal fiber in eukaryotes. This structure consists of approximately 146 bp of DNA wrapped around a nucleosome, an octamer composed of pairs of each of the four core histones (H2A, H2B, H3, and H4). The chromatin fiber is further compacted through the interaction of a linker histone, H1, with the DNA between the nucleosomes to form higher order chromatin structures. This gene is intronless and encodes a replication-dependent histone that is a member of the histone H3 family. Transcripts from this gene lack polyA tails, instead, they contain a palindromic termination element. This gene is found in the large histone gene cluster on chromosome 6p22-p21.3.,H3/A, H3FA,Cell Biology & Developmental Biology,Cell Cycle,Immunology & Inflammation,MAPK-Erk Signaling Pathway,MAPK-P38 Signaling Pathway,NF-kB Signaling Pathway,Protein phosphorylation,Signal Transduction,HIST1H3A

Molecular Weight: 15kDa

Gene ID: 8350

UniProt: [P68431](#)

Application Details

Application Notes: WB,1:500 - 1:2000,IHC,1:50 - 1:200,IF,1:50 - 1:200,ChIP,1:50 - 1:200

Restrictions: For Research Use only

Handling

Format: Liquid

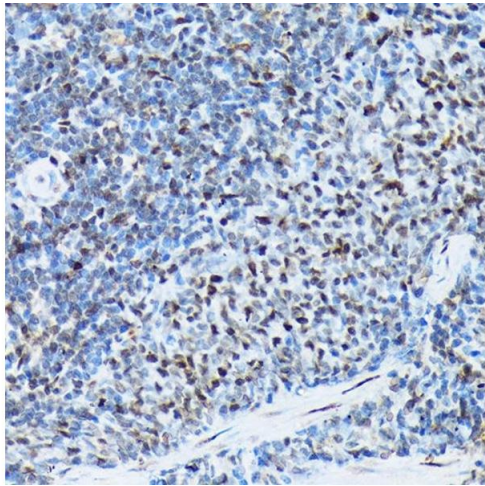
Buffer: PBS with 0.02 % sodium azide,0.05 % BSA,50 % glycerol, pH 7.3.

Preservative: Sodium azide

Precaution of Use: This product contains Sodium azide: a POISONOUS AND HAZARDOUS SUBSTANCE which should be handled by trained staff only.

Storage: -20 °C

Storage Comment: Store at -20°C. Avoid freeze / thaw cycles.



Immunohistochemistry

Image 1. Immunohistochemistry of paraffin-embedded rat spleen using Histone H3 Rabbit mAb (ABIN7267705) at dilution of 1:100 (40x lens). Perform microwave antigen retrieval with 10 mM Tris/EDTA buffer pH 9.0 before commencing with IHC staining protocol.

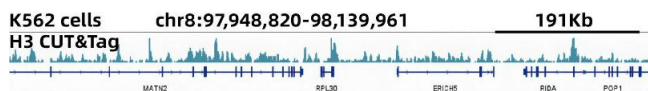
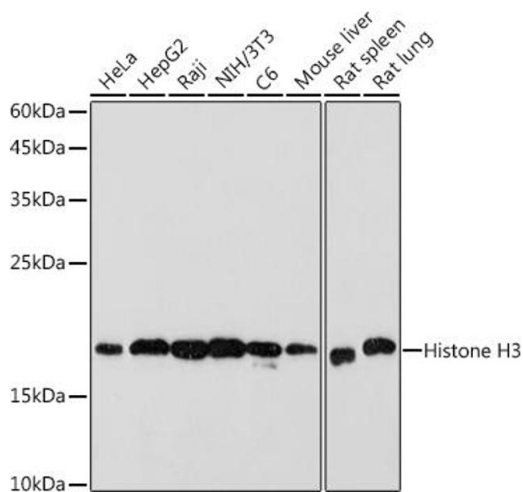


Image 2. CUT&Tag was performed using the CUT&TagAssayKit(pAG-Tn5)forIllumina (RK20265) from 10⁵ K562 cells with 1 ug Histone H3 Rabbit mAb, along with a Goat Anti-Rabbit IgG(H+L). The CUT&Tag results indicate the enrichment pattern of Histone H3 in representative gene loci (RPL30), as shown in figure.



Western Blotting

Image 3. Western blot analysis of extracts of various cell lines, using Histone H3 antibody (ABIN7267705) at 1:1000 dilution. Secondary antibody: HRP Goat Anti-Rabbit IgG (H+L) (ABIN1684268 and ABIN3020597) at 1:10000 dilution. Lysates/proteins: 25 µg per lane. Blocking buffer: 3 % nonfat dry milk in TBST. Detection: ECL Basic Kit (RM00020). Exposure time: 60s.

Please check the [product details page](#) for more images. Overall 6 images are available for ABIN7267705.