

Datasheet for ABIN7267770
anti-HOXB6 antibody (AA 30-110)[Go to Product page](#)

1 Image

Overview

Quantity:	100 µL
Target:	HOXB6
Binding Specificity:	AA 30-110
Reactivity:	Human
Host:	Rabbit
Clonality:	Polyclonal
Conjugate:	This HOXB6 antibody is un-conjugated
Application:	Western Blotting (WB)

Product Details

Purpose:	HOXB6 Rabbit pAb
Immunogen:	Recombinant fusion protein containing a sequence corresponding to amino acids 30-110 of human HOXB6 (NP_061825.2).
Isotype:	IgG
Cross-Reactivity:	Human
Characteristics:	Polyclonal Antibodies
Purification:	Affinity purification

Target Details

Target:	HOXB6
---------	-------

Target Details

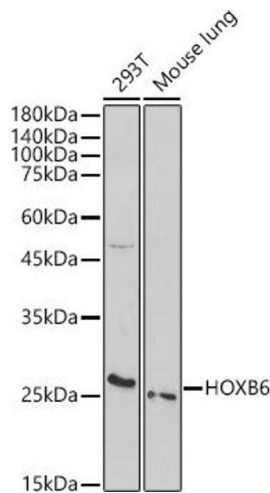
Alternative Name:	HOXB6 (HOXB6 Products)
Background:	This gene is a member of the Antp homeobox family and encodes a protein with a homeobox DNA-binding domain. It is included in a cluster of homeobox B genes located on chromosome 17. The encoded protein functions as a sequence-specific transcription factor that is involved in development, including that of lung and skin, and has been localized to both the nucleus and cytoplasm. Altered expression of this gene or a change in the subcellular localization of its protein is associated with some cases of acute myeloid leukemia and colorectal cancer.,HOX2, HU-2, HOX2B, Hox-2.2,HOXB6
Molecular Weight:	25kDa
Gene ID:	3216
UniProt:	P17509

Application Details

Application Notes:	WB,1:500 - 1:2000
Restrictions:	For Research Use only

Handling

Format:	Liquid
Buffer:	PBS with 0.02 % sodium azide,50 % glycerol, pH 7.3.
Preservative:	Sodium azide
Precaution of Use:	This product contains Sodium azide: a POISONOUS AND HAZARDOUS SUBSTANCE which should be handled by trained staff only.
Storage:	-20 °C
Storage Comment:	Store at -20°C. Avoid freeze / thaw cycles.



Western Blotting

Image 1. Western blot analysis of extracts of various cell lines, using HOXB6 antibody (ABIN7267770) at 1:1000 dilution. Secondary antibody: HRP Goat Anti-Rabbit IgG (H+L) (ABIN1684268 and ABIN3020597) at 1:10000 dilution. Lysates/proteins: 25 µg per lane. Blocking buffer: 3 % nonfat dry milk in TBST. Detection: ECL Enhanced Kit (RM00021). Exposure time: 240s.