

Datasheet for ABIN7267784  
**anti-HCFC1 antibody (AA 1-250)**[Go to Product page](#)

## 1 Image

## Overview

Quantity:	100 µL
Target:	HCFC1
Binding Specificity:	AA 1-250
Reactivity:	Human
Host:	Rabbit
Clonality:	Polyclonal
Conjugate:	This HCFC1 antibody is un-conjugated
Application:	Western Blotting (WB)

## Product Details

Purpose:	HCFC1 Rabbit pAb
Immunogen:	Recombinant fusion protein containing a sequence corresponding to amino acids 1-250 of human HCFC1 (NP_005325.2).
Sequence:	MASAVSPANL PAVLLQPRWK RVVGWSGPVP RPRHGHRAVA IKELIVVFGG GNEGIVDELH VYNTATNQWF IPAVRGDIPP GCAAYGFVCD GTRLLVFGGM VEYGKYSNDL YELQASRWEW KRLKAKTPKN GPPPCPRLGH SFSLVGKNCY LFGGLANDSE DPKNNIPRYL NDLYILELRP GSGVVAWDIP ITYGVLPPPR ESHTAVVYTE KDNKSKSLVI YGGMSGCRLG DLWTLDIDTL TWNKPSLSGV
Isotype:	IgG
Cross-Reactivity:	Human, Mouse, Rat
Characteristics:	Polyclonal Antibodies

## Product Details

Purification: Affinity purification

## Target Details

Target: HCFC1

Alternative Name: HCFC1 ([HCFC1 Products](#))

Background: This gene is a member of the host cell factor family and encodes a protein with five Kelch repeats, a fibronectin-like motif, and six HCF repeats, each of which contains a highly specific cleavage signal. This nuclear coactivator is proteolytically cleaved at one of the six possible sites, resulting in the creation of an N-terminal chain and the corresponding C-terminal chain. The final form of this protein consists of noncovalently bound N- and C-terminal chains. The protein is involved in control of the cell cycle and transcriptional regulation during herpes simplex virus infection. Alternatively spliced variants which encode different protein isoforms have been described, however, not all variants have been fully characterized.,HCFC1,CFF,HCF,HCF-1,HCF1,HFC1,MRX3,PPP1R89,VCAF,Epigenetics & Nuclear Signaling,Cell Biology & Developmental Biology,Cell Cycle,Endocrine & Metabolism,Mitochondrial metabolism,HCFC1

Molecular Weight: 47kDa/201kDa/208kDa/213kDa

Gene ID: 3054

UniProt: [P51610](#)

## Application Details

Application Notes: WB,1:500 - 1:2000

Restrictions: For Research Use only

## Handling

Format: Liquid

Buffer: PBS with 0.02 % sodium azide,50 % glycerol, pH 7.3.

Preservative: Sodium azide

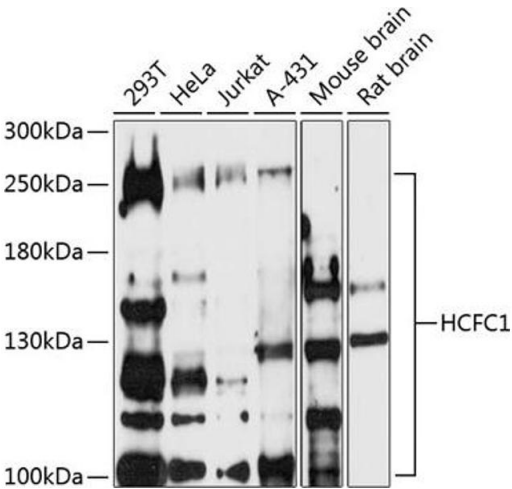
Precaution of Use: This product contains Sodium azide: a POISONOUS AND HAZARDOUS SUBSTANCE which should be handled by trained staff only.

Storage: -20 °C

Handling

Storage Comment: Store at -20°C. Avoid freeze / thaw cycles.

Images



Western Blotting

**Image 1.** Western blot analysis of extracts of various cell lines, using HCFC1 antibody (ABIN7267784) at 1:500 dilution. Secondary antibody: HRP Goat Anti-Rabbit IgG (H+L) (ABIN1684268 and ABIN3020597) at 1:10000 dilution. Lysates/proteins: 25 µg per lane. Blocking buffer: 3 % nonfat dry milk in TBST. Detection: ECL Enhanced Kit (RM00021). Exposure time: 90s.