



[Go to Product page](#)

Datasheet for ABIN7267788

anti-HTRA2 antibody

1 Image

Overview

Quantity:	100 µL
Target:	HTRA2
Reactivity:	Human
Host:	Rabbit
Clonality:	Monoclonal
Conjugate:	This HTRA2 antibody is un-conjugated
Application:	Western Blotting (WB)

Product Details

Purpose:	HTRA2 Rabbit mAb
Immunogen:	A synthesized peptide derived from human HTRA2
Isotype:	IgG
Cross-Reactivity:	Human, Mouse, Rat
Characteristics:	Monoclonal Antibodies
Purification:	Affinity purification

Target Details

Target:	HTRA2
Alternative Name:	HTRA2 (HTRA2 Products)
Background:	This gene encodes a serine protease. The protein has been localized in the endoplasmic

Target Details

reticulum and interacts with an alternatively spliced form of mitogen-activated protein kinase 14. The protein has also been localized to the mitochondria with release to the cytosol following apoptotic stimulus. The protein is thought to induce apoptosis by binding the apoptosis inhibitory protein baculoviral IAP repeat-containing 4. Nuclear localization of this protein has also been observed. Alternate splicing of this gene results in multiple transcript variants encoding different isoforms. [provided by RefSeq, Mar 2016],MGCA8, OMI, PARK13, PRSS25,Apoptosis,Apoptosis_Mitochondrial Control of Apoptosis,Cancer,Cell Biology & Developmental Biology,Death Receptor Signaling Pathway,Endocrine & Metabolism,Invasion and Metastasis,Mitochondrial metabolism,Mitochondrial metabolism_Mitochondrial markers,Neurodegenerative Diseases,Neurodegenerative Diseases_Dopamine Signaling in Parkinsons Disease,Neuroscience,HTRA2

Molecular Weight: 38kDa

Gene ID: 27429

UniProt: [O43464](#)

Pathways: [Positive Regulation of Endopeptidase Activity](#)

Application Details

Application Notes: WB,1:500 - 1:2000

Restrictions: For Research Use only

Handling

Format: Liquid

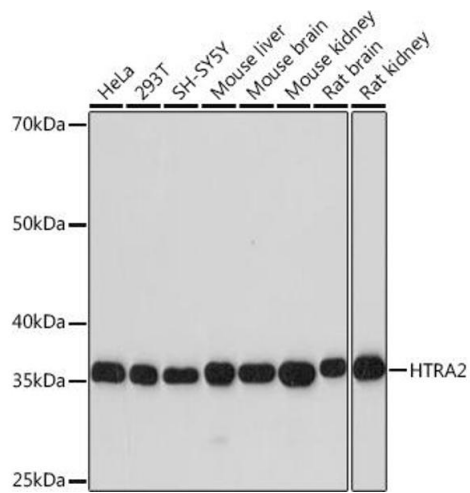
Buffer: PBS with 0.02 % sodium azide,0.05 % BSA,50 % glycerol, pH 7.3.

Preservative: Sodium azide

Precaution of Use: This product contains Sodium azide: a POISONOUS AND HAZARDOUS SUBSTANCE which should be handled by trained staff only.

Storage: -20 °C

Storage Comment: Store at -20°C. Avoid freeze / thaw cycles.



Western Blotting

Image 1. Western blot analysis of extracts of various cell lines, using HTR Rabbit mAb (ABIN7267788) at 1:1000 dilution. Secondary antibody: HRP Goat Anti-Rabbit IgG (H+L) (ABIN1684268 and ABIN3020597) at 1:10000 dilution. Lysates/proteins: 25 µg per lane. Blocking buffer: 3 % nonfat dry milk in TBST. Detection: ECL Basic Kit (RM00020). Exposure time: 10s.