

Datasheet for ABIN7267790
anti-HTRA3 antibody (AA 334-453)[Go to Product page](#)

1 Image

Overview

Quantity:	100 µL
Target:	HTRA3
Binding Specificity:	AA 334-453
Reactivity:	Human
Host:	Rabbit
Clonality:	Polyclonal
Conjugate:	This HTRA3 antibody is un-conjugated
Application:	Western Blotting (WB), Immunohistochemistry (IHC)

Product Details

Purpose:	HTRA3 Rabbit pAb
Immunogen:	Recombinant fusion protein containing a sequence corresponding to amino acids 334-453 of human HTRA3 (NP_444272.1).
Sequence:	SDRITRFLTE FQDKQIKDWK KRFIGIRMRT ITPSLVDELK ASNPDFPEVS SGIYVQEVAP NSPSQRGGIQ DGDIIVKVNG RPLVDSSSELQ EAVLTESPLL LEVRRGNDDL LFSIAPEVVM
Isotype:	IgG
Cross-Reactivity:	Human, Mouse, Rat
Characteristics:	Polyclonal Antibodies
Purification:	Affinity purification

Target Details

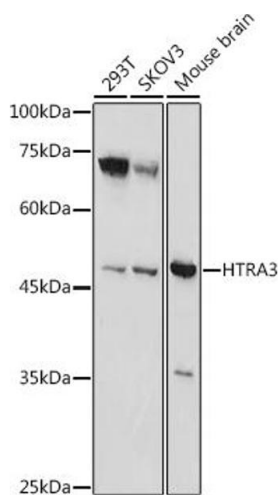
Target:	HTRA3
Alternative Name:	HTRA3 (HTRA3 Products)
Background:	Serine protease that cleaves beta-casein/CSN2 as well as several extracellular matrix (ECM) proteoglycans such as decorin/DCN, biglycan/BGN and fibronectin/FN1. Inhibits signaling mediated by TGF-beta family proteins possibly indirectly by degradation of these ECM proteoglycans (By similarity. May act as a tumor suppressor. Negatively regulates, in vitro, trophoblast invasion during placental development and may be involved in the development of the placenta in vivo. May also have a role in ovarian development, granulosa cell differentiation and luteinization.,HTRA3,Prsp,Tasp,Signal Transduction,Neuroscience,Calcium Signaling,HTRA3
Molecular Weight:	37kDa/48kDa
Gene ID:	94031
UniProt:	P83110

Application Details

Application Notes:	WB,1:500 - 1:2000,IHC,1:50 - 1:200
Restrictions:	For Research Use only

Handling

Format:	Liquid
Buffer:	PBS with 0.02 % sodium azide,50 % glycerol, pH 7.3.
Preservative:	Sodium azide
Precaution of Use:	This product contains Sodium azide: a POISONOUS AND HAZARDOUS SUBSTANCE which should be handled by trained staff only.
Storage:	-20 °C
Storage Comment:	Store at -20°C. Avoid freeze / thaw cycles.



Western Blotting

Image 1. Western blot analysis of extracts of various cell lines, using HTR antibody (ABIN7267790) at 1:1000 dilution. Secondary antibody: HRP Goat Anti-Rabbit IgG (H+L) (ABIN1684268 and ABIN3020597) at 1:10000 dilution. Lysates/proteins: 25 µg per lane. Blocking buffer: 3 % nonfat dry milk in TBST. Detection: ECL Basic Kit (RM00020). Exposure time: 180s.