

Datasheet for ABIN7267800

anti-HMMR antibody**3** Images[Go to Product page](#)

Overview

Quantity:	100 µL
Target:	HMMR
Reactivity:	Human
Host:	Rabbit
Clonality:	Monoclonal
Conjugate:	This HMMR antibody is un-conjugated
Application:	Western Blotting (WB), Immunohistochemistry (IHC)

Product Details

Purpose:	CD168/RHAMM Rabbit mAb
Immunogen:	A synthesized peptide derived from human CD168/RHAMM
Isotype:	IgG
Cross-Reactivity:	Human, Mouse
Characteristics:	Monoclonal Antibodies
Purification:	Affinity purification

Target Details

Target:	HMMR
Alternative Name:	HMMR (HMMR Products)
Background:	The protein encoded by this gene is involved in cell motility. It is expressed in breast tissue and

Target Details

together with other proteins, it forms a complex with BRCA1 and BRCA2, thus is potentially associated with higher risk of breast cancer. Alternatively spliced transcript variants encoding different isoforms have been noted for this gene. [provided by RefSeq, Dec 2008],CD168, IHABP, RHAMM,Cancer,CDs,Cell Biology & Developmental Biology,Embryonic Stem Cells,Immunology & Inflammation,Stem Cells,Tumor immunology,HMMR

Molecular Weight: 85kDa

Gene ID: 3161

UniProt: [O75330](#)

Pathways: [Glycosaminoglycan Metabolic Process](#)

Application Details

Application Notes: WB,1:500 - 1:2000,IHC,1:50 - 1:200

Restrictions: For Research Use only

Handling

Format: Liquid

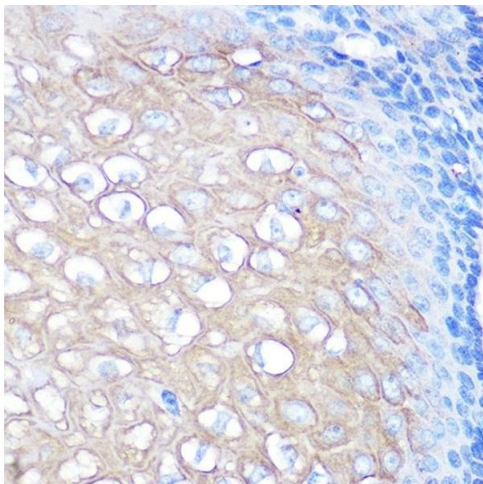
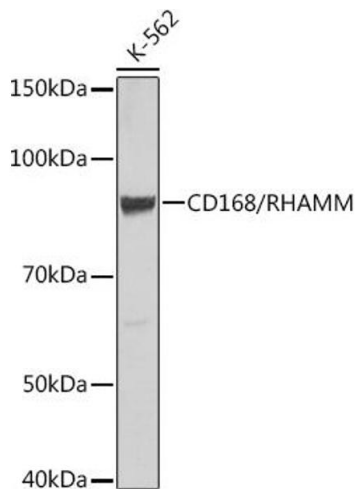
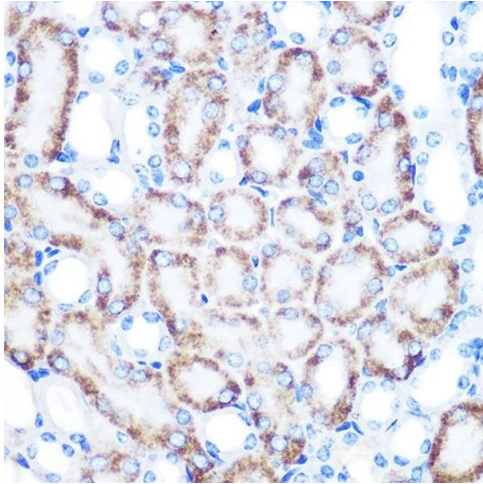
Buffer: PBS with 0.02 % sodium azide,0.05 % BSA,50 % glycerol, pH 7.3.

Preservative: Sodium azide

Precaution of Use: This product contains Sodium azide: a POISONOUS AND HAZARDOUS SUBSTANCE which should be handled by trained staff only.

Storage: -20 °C

Storage Comment: Store at -20°C. Avoid freeze / thaw cycles.



Immunohistochemistry

Image 1. Immunohistochemistry of paraffin-embedded mouse kidney using [KO Validated] CD168/RHAMM Rabbit mAb at dilution of 1:100 (40x lens). Perform microwave antigen retrieval with 10 mM PBS buffer pH 7.2 before commencing with IHC staining protocol.

Western Blotting

Image 2. Western blot analysis of extracts of K-562 cells, using CD168/RHAMM Rabbit mAb at 1:500 dilution. Secondary antibody: HRP Goat Anti-Rabbit IgG (H+L) (ABIN1684268 and ABIN3020597) at 1:10000 dilution. Lysates/proteins: 25 µg per lane. Blocking buffer: 3 % nonfat dry milk in TBST. Detection: ECL Basic Kit (RM00020). Exposure time: 3 min.

Immunohistochemistry

Image 3. Immunohistochemistry of paraffin-embedded human esophageal using [KO Validated] CD168/RHAMM Rabbit mAb at dilution of 1:100 (40x lens). Perform microwave antigen retrieval with 10 mM PBS buffer pH 7.2 before commencing with IHC staining protocol.