

Datasheet for ABIN7267817

**anti-HPRT1 antibody**[Go to Product page](#)**1** Image

## Overview

Quantity:	100 µL
Target:	HPRT1
Reactivity:	Human
Host:	Rabbit
Clonality:	Monoclonal
Conjugate:	This HPRT1 antibody is un-conjugated
Application:	Western Blotting (WB)

## Product Details

Purpose:	HPRT1 Rabbit mAb
Immunogen:	A synthesized peptide derived from human HPRT11
Isotype:	IgG
Cross-Reactivity:	Human, Mouse, Rat
Characteristics:	Monoclonal Antibodies
Purification:	Affinity purification

## Target Details

Target:	HPRT1
Alternative Name:	HPRT1 ( <a href="#">HPRT1 Products</a> )
Background:	The protein encoded by this gene is a transferase, which catalyzes conversion of hypoxanthine

## Target Details

to inosine monophosphate and guanine to guanosine monophosphate via transfer of the 5-phosphoribosyl group from 5-phosphoribosyl 1-pyrophosphate. This enzyme plays a central role in the generation of purine nucleotides through the purine salvage pathway. Mutations in this gene result in Lesch-Nyhan syndrome or gout.[provided by RefSeq, Jun 2009],HGPRT, HPRT,Cell Biology & Developmental Biology,Epigenetics & Nuclear Signaling,HPRT1

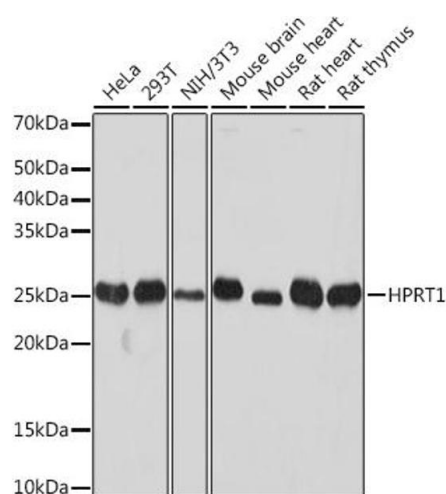
Molecular Weight:	25kDa
Gene ID:	3251
UniProt:	<a href="#">P00492</a>
Pathways:	<a href="#">Ribonucleoside Biosynthetic Process</a>

## Application Details

Application Notes:	WB,1:500 - 1:2000
Restrictions:	For Research Use only

## Handling

Format:	Liquid
Buffer:	PBS with 0.02 % sodium azide,0.05 % BSA,50 % glycerol, pH 7.3.
Preservative:	Sodium azide
Precaution of Use:	This product contains Sodium azide: a POISONOUS AND HAZARDOUS SUBSTANCE which should be handled by trained staff only.
Storage:	-20 °C
Storage Comment:	Store at -20°C. Avoid freeze / thaw cycles.



Western Blotting

**Image 1.** Western blot analysis of extracts of various cell lines, using HPRT11 Rabbit mAb at 1:1000 dilution. Secondary antibody: HRP Goat Anti-Rabbit IgG (H+L) (ABIN1684268 and ABIN3020597) at 1:10000 dilution. Lysates/proteins: 25 µg per lane. Blocking buffer: 3 % nonfat dry milk in TBST. Detection: ECL Basic Kit (RM00020). Exposure time: 10s.