

Datasheet for ABIN7267835

Rabbit anti-Rabbit IgG Antibody[Go to Product page](#)**1** Image

Overview

Quantity:	100 µL
Target:	IgG
Reactivity:	Rabbit
Host:	Rabbit
Application:	Western Blotting (WB)

Product Details

Purpose:	Rabbit Anti-Goat IgG (H+L)
Immunogen:	Goat IgG
Isotype:	IgG
Characteristics:	Secondary Antibodies
Purification:	Affinity purification

Target Details

Target:	IgG
Abstract:	IgG Products
Target Type:	Antibody
Background:	Secondary antibodies are affinity-purified antibodies which will work with target-specific primary antibody in the detection, sorting or purification of its specified target. Secondary antibodies offer increased versatility enabling users to use many detection systems (e.g. HRP, AP, fluorescence). They can also provide greater sensitivity through signal amplification as

Target Details

multiple secondary antibodies . Most commonly, secondary antibodies are generated by immunizing the host animal (different from host species of primary antibody) with a pooled population of normal immunoglobulins from the host species of primary antibody and can be further purified and modified (i.e. antibody fragmentation, label conjugation, etc.) to ensure well-characterized specificity to corresponding normal immunoglobulins.,Rabbit Anti-Goat

Application Details

Application Notes: WB,1:500 - 1:2000

Restrictions: For Research Use only

Handling

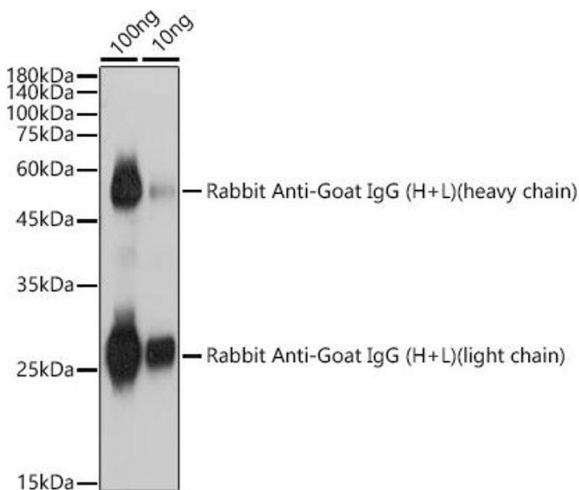
Format: Liquid

Buffer: 50 % glycerol, pH 7.3.

Storage: -20 °C

Storage Comment: Store at -20°C. Avoid freeze / thaw cycles.

Images



Western Blotting

Image 1. Western blot analysis of extracts of Rabbit Anti-Goat IgG (H+L), using Rabbit Anti-Goat IgG (H+L) antibody (ABIN7267835) at 1:1000 dilution. Secondary antibody: HRP Goat Anti-Rabbit IgG (H+L) (ABIN1684268 and ABIN3020597) at 1:10000 dilution. Lysates/proteins: 25 µg per lane. Blocking buffer: 3 % nonfat dry milk in TBST. Detection: ECL Basic Kit (RM00020). Exposure time: 1s.