

Datasheet for ABIN7267839

**anti-IgG3 antibody****1** Image[Go to Product page](#)

## Overview

Quantity:	100 µL
Target:	IgG3
Reactivity:	Human
Host:	Rabbit
Clonality:	Monoclonal
Conjugate:	This IgG3 antibody is un-conjugated
Application:	Western Blotting (WB)

## Product Details

Purpose:	Human IgG3 Rabbit mAb
Immunogen:	A synthesized peptide derived from human Human IgG3
Isotype:	IgG
Cross-Reactivity:	Human, Mouse, Rat
Characteristics:	Monoclonal Antibodies
Purification:	Affinity purification

## Target Details

Target:	IgG3
Alternative Name:	IGHG3 ( <a href="#">IgG3 Products</a> )
Target Type:	Antibody

## Target Details

**Background:** Constant region of immunoglobulin heavy chains. Immunoglobulins, also known as antibodies, are membrane-bound or secreted glycoproteins produced by B lymphocytes. In the recognition phase of humoral immunity, the membrane-bound immunoglobulins serve as receptors which, upon binding of a specific antigen, trigger the clonal expansion and differentiation of B lymphocytes into immunoglobulins-secreting plasma cells. Secreted immunoglobulins mediate the effector phase of humoral immunity, which results in the elimination of bound antigens. The antigen binding site is formed by the variable domain of one heavy chain, together with that of its associated light chain. Thus, each immunoglobulin has two antigen binding sites with remarkable affinity for a particular antigen. The variable domains are assembled by a process called V-(D-J rearrangement and can then be subjected to somatic hypermutations which, after exposure to antigen and selection, allow affinity maturation for a particular antigen.,IgG3,Immunology & Inflammation,IHG3

**Molecular Weight:** kDa

**Gene ID:** 3502

**UniProt:** [P01860](#)

## Application Details

**Application Notes:** WB,1:500 - 1:2000

**Restrictions:** For Research Use only

## Handling

**Format:** Liquid

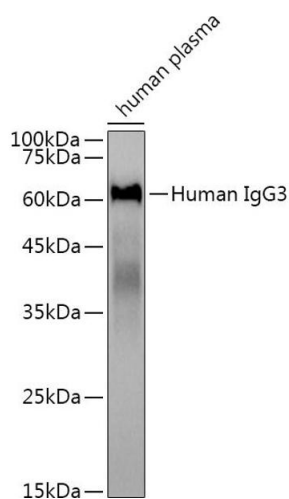
**Buffer:** PBS with 0.02 % sodium azide,0.05 % BSA,50 % glycerol, pH 7.3.

**Preservative:** Sodium azide

**Precaution of Use:** This product contains Sodium azide: a POISONOUS AND HAZARDOUS SUBSTANCE which should be handled by trained staff only.

**Storage:** -20 °C

**Storage Comment:** Store at -20°C. Avoid freeze / thaw cycles.



Western Blotting

**Image 1.** Western blot analysis of extracts of human plasma, using Human IgG3 antibody (ABIN7267839) at 1:3000 dilution. Secondary antibody: HRP Goat Anti-Rabbit IgG (H+L) (ABIN1684268 and ABIN3020597) at 1:10000 dilution. Lysates/proteins: 25 µg per lane. Blocking buffer: 3 % nonfat dry milk in TBST. Detection: ECL Basic Kit (RM00020). Exposure time: 1s.