



Datasheet for ABIN7267847

anti-IGLV1-51 antibody



[Go to Product page](#)

4 Images

Overview

Quantity:	100 µL
Target:	IGLV1-51
Reactivity:	Human
Host:	Rabbit
Clonality:	Monoclonal
Conjugate:	This IGLV1-51 antibody is un-conjugated
Application:	Western Blotting (WB)

Product Details

Purpose:	Lambda Light chain Rabbit mAb
Immunogen:	A synthesized peptide derived from human Lambda Light chain
Isotype:	IgG
Cross-Reactivity:	Human, Mouse, Rat
Characteristics:	Monoclonal Antibodies
Purification:	Affinity purification

Target Details

Target:	IGLV1-51
Alternative Name:	IGLV1-51 (IGLV1-51 Products)
Background:	Predicted to be involved in immune response. Located in extracellular exosome.,IGLV151, V1-

Target Details

19,IGLV1-51

Molecular Weight: 25kDa

Gene ID: 28820

UniProt: [P01701](#), [P01842](#)

Application Details

Application Notes: WB,1:500 - 1:2000

Restrictions: For Research Use only

Handling

Format: Liquid

Buffer: PBS with 0.02 % sodium azide,0.05 % BSA,50 % glycerol, pH 7.3.

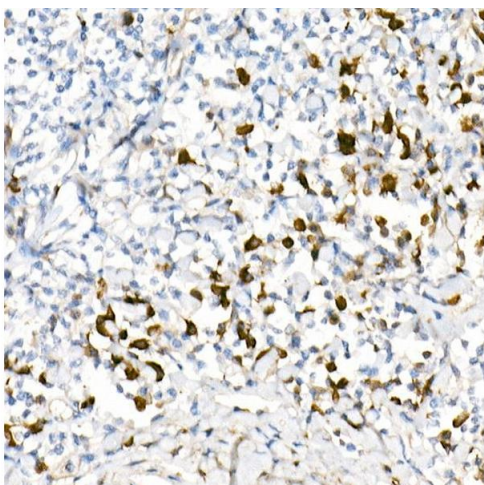
Preservative: Sodium azide

Precaution of Use: This product contains Sodium azide: a POISONOUS AND HAZARDOUS SUBSTANCE which should be handled by trained staff only.

Storage: -20 °C

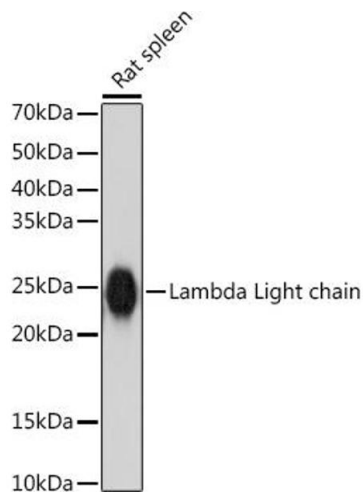
Storage Comment: Store at -20°C. Avoid freeze / thaw cycles.

Images



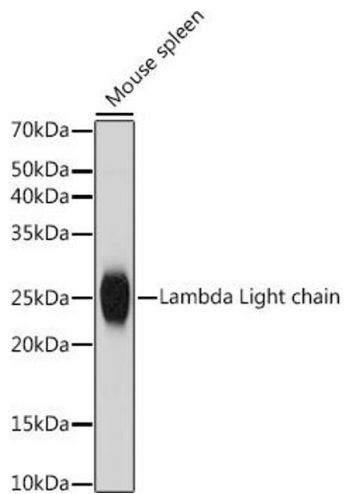
Immunohistochemistry

Image 1. Immunohistochemistry of paraffin-embedded human tonsil using Lambda Light chain Rabbit mAb (ABIN7267847) at dilution of 1:100 (40x lens).



Western Blotting

Image 2. Western blot analysis of extracts of Rat spleen, using Lambda Light chain antibody (ABIN7267847) at 1:1000 dilution. Secondary antibody: HRP Goat Anti-Rabbit IgG (H+L) (ABIN1684268 and ABIN3020597) at 1:10000 dilution. Lysates/proteins: 25 µg per lane. Blocking buffer: 3 % nonfat dry milk in TBST. Detection: ECL Basic Kit (RM00020). Exposure time: 10s.



Western Blotting

Image 3. Western blot analysis of extracts of Mouse spleen, using Lambda Light chain antibody (ABIN7267847) at 1:1000 dilution. Secondary antibody: HRP Goat Anti-Rabbit IgG (H+L) (ABIN1684268 and ABIN3020597) at 1:10000 dilution. Lysates/proteins: 25 µg per lane. Blocking buffer: 3 % nonfat dry milk in TBST. Detection: ECL Basic Kit (RM00020). Exposure time: 1s.

Please check the [product details page](#) for more images. Overall 4 images are available for ABIN7267847.