

Datasheet for ABIN7267852
anti-IMPDH2 antibody



[Go to Product page](#)

4 Images

Overview

Quantity:	100 µL
Target:	IMPDH2
Reactivity:	Human
Host:	Rabbit
Clonality:	Monoclonal
Conjugate:	This IMPDH2 antibody is un-conjugated
Application:	Western Blotting (WB), Immunofluorescence (IF)

Product Details

Purpose:	IMPDH2 Rabbit mAb
Immunogen:	A synthesized peptide derived from human IMPDH2
Isotype:	IgG
Cross-Reactivity:	Human, Mouse, Rat
Characteristics:	Monoclonal Antibodies
Purification:	Affinity purification

Target Details

Target:	IMPDH2
Alternative Name:	IMPDH2 (IMPDH2 Products)
Background:	This gene encodes the rate-limiting enzyme in the de novo guanine nucleotide biosynthesis. It is

Target Details

thus involved in maintaining cellular guanine deoxy- and ribonucleotide pools needed for DNA and RNA synthesis. The encoded protein catalyzes the NAD-dependent oxidation of inosine-5'-monophosphate into xanthine-5'-monophosphate, which is then converted into guanosine-5'-monophosphate. This gene is up-regulated in some neoplasms, suggesting it may play a role in malignant transformation. [provided by RefSeq, Jul 2008],IMPD2, IMPDH-II,Cancer,Cell Biology & Developmental Biology,Endocrine & Metabolism,Growth factors,Signal Transduction,IMPDH2

Molecular Weight: 56kDa

Gene ID: 3615

UniProt: [P12268](#)

Pathways: [Ribonucleoside Biosynthetic Process](#), [SARS-CoV-2 Protein Interactome](#)

Application Details

Application Notes: WB,1:500 - 1:2000,IF,1:50 - 1:200

Restrictions: For Research Use only

Handling

Format: Liquid

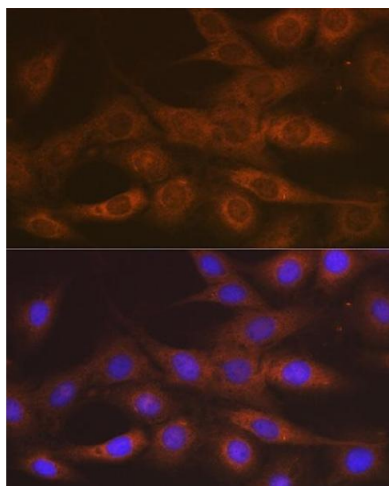
Buffer: PBS with 0.02 % sodium azide,0.05 % BSA,50 % glycerol, pH 7.3.

Preservative: Sodium azide

Precaution of Use: This product contains Sodium azide: a POISONOUS AND HAZARDOUS SUBSTANCE which should be handled by trained staff only.

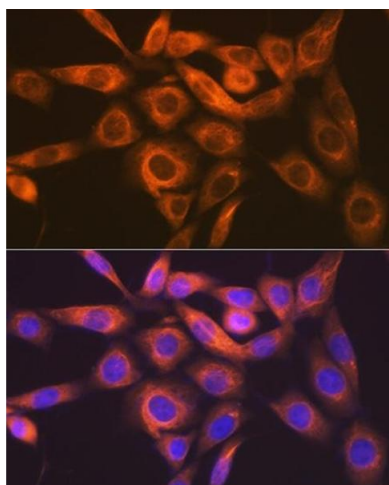
Storage: -20 °C

Storage Comment: Store at -20°C. Avoid freeze / thaw cycles.



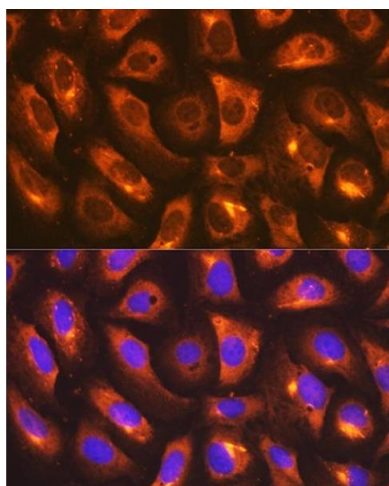
Immunofluorescence

Image 1. Immunofluorescence analysis of C6 cells using IMPDH2 Rabbit mAb at dilution of 1:100 (40x lens). Blue: DAPI for nuclear staining.



Immunofluorescence

Image 2. Immunofluorescence analysis of NIH-3T3 cells using IMPDH2 Rabbit mAb at dilution of 1:100 (40x lens). Blue: DAPI for nuclear staining.



Immunofluorescence

Image 3. Immunofluorescence analysis of U-2 OS cells using IMPDH2 Rabbit mAb at dilution of 1:100 (40x lens). Blue: DAPI for nuclear staining.

Please check the [product details page](#) for more images. Overall 4 images are available for ABIN7267852.