



[Go to Product page](#)

Datasheet for ABIN7267854
anti-Importin 11 antibody (AA 776-975)

1 Image

Overview

Quantity:	100 µL
Target:	Importin 11 (IPO11)
Binding Specificity:	AA 776-975
Reactivity:	Human
Host:	Rabbit
Clonality:	Polyclonal
Conjugate:	This Importin 11 antibody is un-conjugated
Application:	Western Blotting (WB)

Product Details

Purpose:	IPO11 Rabbit pAb
Immunogen:	Recombinant fusion protein containing a sequence corresponding to amino acids 776-975 of human IPO11 (NP_057422.3).
Sequence:	KGIIEGERYP VVMSTYLGVM GRVLLQNTSF FSSLLNEMAH KFNQEMDQLL GNMIEMWVDR MDNITQPERR KLSALALLSL LPSDNSVIQD KFCGIINISV EGLHDVMTED PETGTYKDCM LMSHLEEPKV TEDEEPTEQ DKRKKMLALK DPVHTVSLQQ FIYEKLKAQQ EMLGEQGFQS LMETVDTEIV TQLQEFLQGF
Isotype:	IgG
Cross-Reactivity:	Human, Mouse
Characteristics:	Polyclonal Antibodies

Product Details

Purification: Affinity purification

Target Details

Target: Importin 11 (IPO11)

Alternative Name: IPO11 ([IPO11 Products](#))

Background: Importins, including IPO11, are a members of the karyopherin/importin-beta family of transport receptors (see KPNB1, 602738) that mediate nucleocytoplasmic transport of protein and RNA cargoes (Plafker and Macara, 2000 [PubMed 11032817]).[supplied by OMIM, Sep 2008],IPO11,RanBP11,Signal Transduction,IPO11

Molecular Weight: 112kDa/117kDa

Gene ID: 51194

UniProt: [Q9UI26](#)

Pathways: [Protein targeting to Nucleus](#)

Application Details

Application Notes: WB,1:500 - 1:2000

Restrictions: For Research Use only

Handling

Format: Liquid

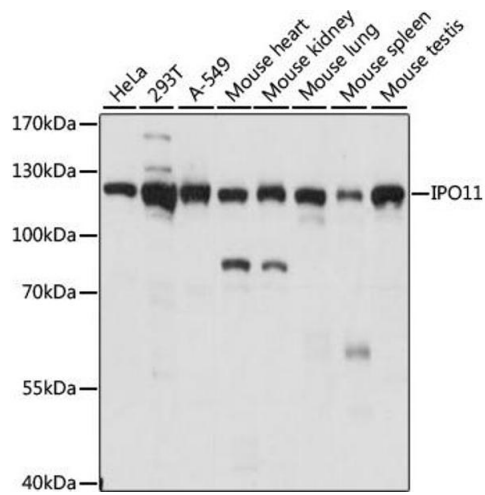
Buffer: PBS with 0.02 % sodium azide,50 % glycerol, pH 7.3.

Preservative: Sodium azide

Precaution of Use: This product contains Sodium azide: a POISONOUS AND HAZARDOUS SUBSTANCE which should be handled by trained staff only.

Storage: -20 °C

Storage Comment: Store at -20°C. Avoid freeze / thaw cycles.



Western Blotting

Image 1. Western blot analysis of extracts of various cell lines, using IPO11 antibody (ABIN7267854) at 1:1000 dilution. Secondary antibody: HRP Goat Anti-Rabbit IgG (H+L) (ABIN1684268 and ABIN3020597) at 1:10000 dilution. Lysates/proteins: 25 µg per lane. Blocking buffer: 3% nonfat dry milk in TBST. Detection: ECL Basic Kit (RM00020). Exposure time: 1s.