



Datasheet for ABIN7267863

## anti-IDO1 antibody



[Go to Product page](#)

### 3 Images

#### Overview

Quantity:	100 µL
Target:	IDO1
Reactivity:	Human
Host:	Rabbit
Clonality:	Monoclonal
Conjugate:	This IDO1 antibody is un-conjugated
Application:	Western Blotting (WB), Immunohistochemistry (IHC)

#### Product Details

Purpose:	IDO1 Rabbit mAb
Immunogen:	A synthesized peptide derived from human IDO1
Isotype:	IgG
Cross-Reactivity:	Human, Mouse
Characteristics:	Monoclonal Antibodies
Purification:	Affinity purification

#### Target Details

Target:	IDO1
Alternative Name:	IDO1 ( <a href="#">IDO1 Products</a> )
Background:	This gene encodes indoleamine 2,3-dioxygenase (IDO) - a heme enzyme that catalyzes the first

## Target Details

---

and rate-limiting step in tryptophan catabolism to N-formyl-kynurenine. This enzyme acts on multiple tryptophan substrates including D-tryptophan, L-tryptophan, 5-hydroxy-tryptophan, tryptamine, and serotonin. This enzyme is thought to play a role in a variety of pathophysiological processes such as antimicrobial and antitumor defense, neuropathology, immunoregulation, and antioxidant activity. Through its expression in dendritic cells, monocytes, and macrophages this enzyme modulates T-cell behavior by its peri-cellular catabolization of the essential amino acid tryptophan.[provided by RefSeq, Feb 2011],IDO, IDO-1, INDO,Amino acid metabolism,Cancer,Cardiovascular,Endocrine & Metabolism,Immunology & Inflammation,Signal Transduction,IDO1

---

Molecular Weight: 45kDa

---

Gene ID: 3620

---

UniProt: [P14902](#)

---

Pathways: [Activated T Cell Proliferation](#)

## Application Details

---

---

Application Notes: WB,1:500 - 1:2000,IHC,1:50 - 1:200

---

Restrictions: For Research Use only

## Handling

---

---

Format: Liquid

---

Buffer: PBS with 0.02 % sodium azide,0.05 % BSA,50 % glycerol, pH 7.3.

---

Preservative: Sodium azide

---

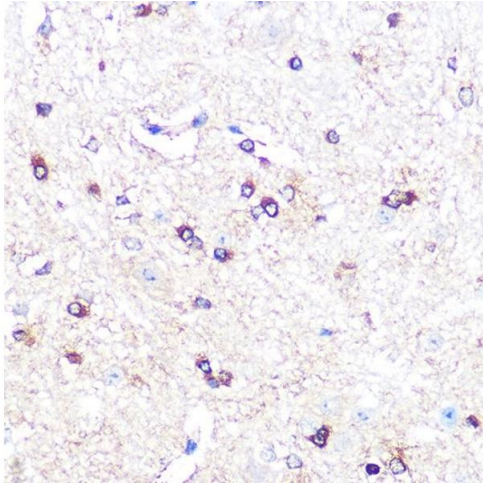
Precaution of Use: This product contains Sodium azide: a POISONOUS AND HAZARDOUS SUBSTANCE which should be handled by trained staff only.

---

Storage: -20 °C

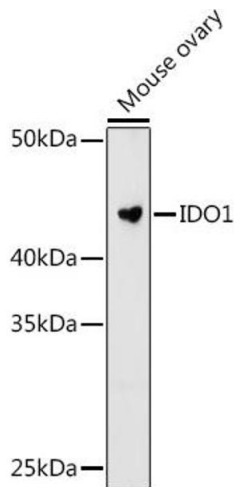
---

Storage Comment: Store at -20°C. Avoid freeze / thaw cycles.



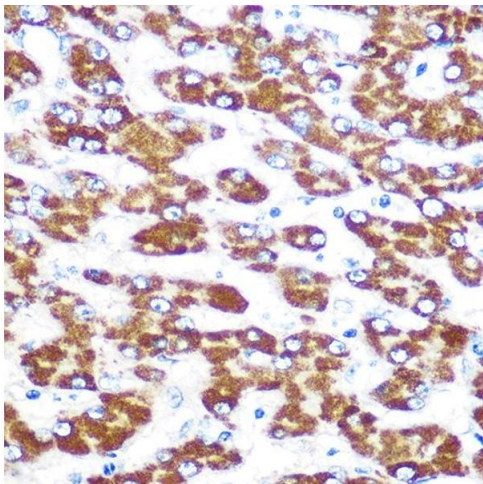
### Immunohistochemistry

**Image 1.** Immunohistochemistry of paraffin-embedded mouse spinal cord using IDO1 Rabbit mAb (ABIN7267863) at dilution of 1:100 (40x lens). Perform microwave antigen retrieval with 10 mM PBS buffer pH 7.2 before commencing with IHC staining protocol.



### Western Blotting

**Image 2.** Western blot analysis of extracts of Mouse ovary cells, using IDO1 antibody (ABIN7267863) at 1:1000 dilution. Secondary antibody: HRP Goat Anti-Rabbit IgG (H+L) (ABIN1684268 and ABIN3020597) at 1:10000 dilution. Lysates/proteins: 25 µg per lane. Blocking buffer: 3 % nonfat dry milk in TBST. Detection: ECL Enhanced Kit (RM00021). Exposure time: 180s.



### Immunohistochemistry

**Image 3.** Immunohistochemistry of paraffin-embedded human liver using IDO1 Rabbit mAb (ABIN7267863) at dilution of 1:100 (40x lens). Perform microwave antigen retrieval with 10 mM PBS buffer pH 7.2 before commencing with IHC staining protocol.