

Datasheet for ABIN7267865

anti-INMT antibody[Go to Product page](#)**1** Image

Overview

| | |
|--------------|-------------------------------------|
| Quantity: | 100 µL |
| Target: | INMT |
| Reactivity: | Human |
| Host: | Rabbit |
| Clonality: | Monoclonal |
| Conjugate: | This INMT antibody is un-conjugated |
| Application: | Western Blotting (WB) |

Product Details

| | |
|-------------------|------------------------------------|
| Purpose: | TEMT Rabbit mAb |
| Immunogen: | Recombinant protein of Human TEMT. |
| Isotype: | IgG |
| Cross-Reactivity: | Mouse |
| Characteristics: | Monoclonal Antibodies |
| Purification: | Affinity purification |

Target Details

| | |
|-------------------|--|
| Target: | INMT |
| Alternative Name: | TEMT (INMT Products) |
| Background: | N-methylation of endogenous and xenobiotic compounds is a major method by which they are |

Target Details

degraded. This gene encodes an enzyme that N-methylates indoles such as tryptamine. Alternative splicing results in multiple transcript variants. Read-through transcription also exists between this gene and the downstream FAM188B (family with sequence similarity 188, member B) gene.,INMT,TEMT,Signal Transduction,Endocrine & Metabolism,Amino acid metabolism,Drug metabolism,TEMT

Molecular Weight: 28kDa

Gene ID: 11185

UniProt: [O95050](#)

Application Details

Application Notes: WB,1:500 - 1:2000

Restrictions: For Research Use only

Handling

Format: Liquid

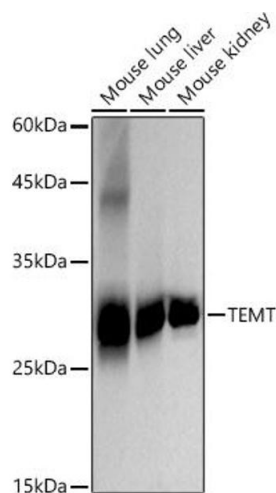
Buffer: PBS with 0.02 % sodium azide,0.05 % BSA,50 % glycerol, pH 7.3.

Preservative: Sodium azide

Precaution of Use: This product contains Sodium azide: a POISONOUS AND HAZARDOUS SUBSTANCE which should be handled by trained staff only.

Storage: -20 °C

Storage Comment: Store at -20°C. Avoid freeze / thaw cycles.



Western Blotting

Image 1. Western blot analysis of extracts of various cell lines, using TEMT antibody (ABIN7267865) at 1:2000 dilution. Secondary antibody: HRP Goat Anti-Rabbit IgG (H+L) (ABIN1684268 and ABIN3020597) at 1:10000 dilution. Lysates/proteins: 25 µg per lane. Blocking buffer: 3 % nonfat dry milk in TBST. Detection: ECL Basic Kit (RM00020). Exposure time: 10s.