



[Go to Product page](#)

Datasheet for ABIN7267870

## anti-INHBA antibody

### 2 Images

#### Overview

Quantity:	100 µL
Target:	INHBA
Reactivity:	Human
Host:	Rabbit
Clonality:	Monoclonal
Conjugate:	This INHBA antibody is un-conjugated
Application:	Western Blotting (WB), Immunofluorescence (IF)

#### Product Details

Purpose:	Inhibin beta A (INHBA) Rabbit mAb
Immunogen:	A synthesized peptide derived from human Inhibin beta A (INHBA) (INHBA)
Isotype:	IgG
Cross-Reactivity:	Human, Mouse, Rat
Characteristics:	Monoclonal Antibodies
Purification:	Affinity purification

#### Target Details

Target:	INHBA
Alternative Name:	INHBA ( <a href="#">INHBA Products</a> )
Background:	This gene encodes a member of the TGF-beta (transforming growth factor-beta) superfamily of

## Target Details

---

proteins. The encoded preproprotein is proteolytically processed to generate a subunit of the dimeric activin and inhibin protein complexes. These complexes activate and inhibit, respectively, follicle stimulating hormone secretion from the pituitary gland. The encoded protein also plays a role in eye, tooth and testis development. Elevated expression of this gene may be associated with cancer cachexia in human patients. [provided by RefSeq, Aug 2016],EDF, FRP,Apoptosis,Cancer,Cell Biology & Developmental Biology,Cytokines,Growth factors,Immunology & Inflammation,Signal Transduction,Tumor biomarkers,INHBA

---

Molecular Weight: 47kDa

---

Gene ID: 3624

---

UniProt: [P08476](#)

---

Pathways: [Hormone Transport](#), [Peptide Hormone Metabolism](#), [Hormone Activity](#), [Negative Regulation of Hormone Secretion](#), [Autophagy](#)

## Application Details

---

---

Application Notes: WB,1:500 - 1:2000,IF,1:50 - 1:200

---

Restrictions: For Research Use only

## Handling

---

---

Format: Liquid

---

Buffer: PBS with 0.02 % sodium azide,0.05 % BSA,50 % glycerol, pH 7.3.

---

Preservative: Sodium azide

---

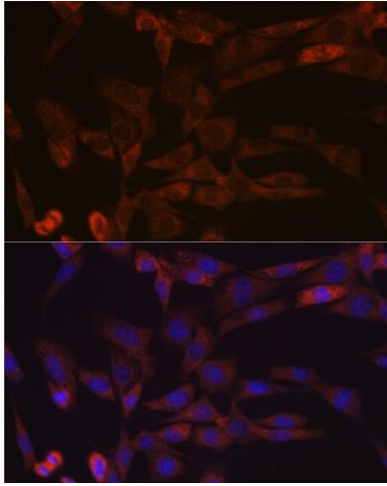
Precaution of Use: This product contains Sodium azide: a POISONOUS AND HAZARDOUS SUBSTANCE which should be handled by trained staff only.

---

Storage: -20 °C

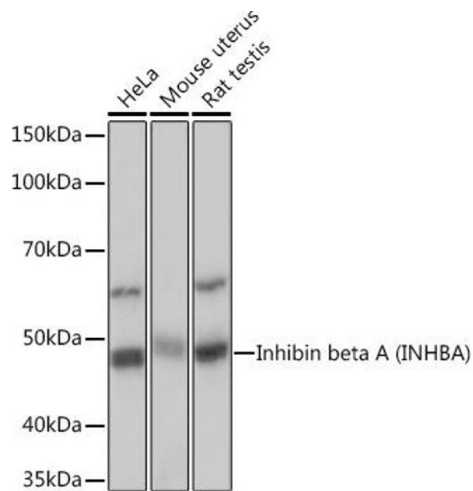
---

Storage Comment: Store at -20°C. Avoid freeze / thaw cycles.



### Immunofluorescence

**Image 1.** Immunofluorescence analysis of NIH-3T3 cells using Inhibin beta A (INHBA) (INHBA) Rabbit mAb (ABIN7267870) at dilution of 1:100 (40x lens). Blue: DAPI for nuclear staining.



### Western Blotting

**Image 2.** Western blot analysis of extracts of various cell lines, using Inhibin beta A (INHBA) (INHBA) Rabbit mAb (ABIN7267870) at 1:1000 dilution. Secondary antibody: HRP Goat Anti-Rabbit IgG (H+L) (ABIN1684268 and ABIN3020597) at 1:10000 dilution. Lysates/proteins: 25 µg per lane. Blocking buffer: 3% nonfat dry milk in TBST. Detection: ECL Basic Kit (RM00020). Exposure time: 1s.