



[Go to Product page](#)

Datasheet for ABIN7267873

## anti-IKBKB antibody

### 4 Images

#### Overview

Quantity:	100 µL
Target:	IKBKB
Reactivity:	Human
Host:	Rabbit
Clonality:	Monoclonal
Conjugate:	This IKBKB antibody is un-conjugated
Application:	Western Blotting (WB), Immunohistochemistry (IHC), Immunofluorescence (IF)

#### Product Details

Purpose:	IKK $\beta$ Rabbit mAb
Immunogen:	A synthesized peptide derived from human IKKbeta.
Isotype:	IgG
Cross-Reactivity:	Human, Mouse, Rat
Characteristics:	Monoclonal Antibodies
Purification:	Affinity purification

#### Target Details

Target:	IKBKB
Alternative Name:	IKBKB ( <a href="#">IKBKB Products</a> )
Background:	The protein encoded by this gene phosphorylates the inhibitor in the inhibitor/NF-kappa-B

## Target Details

---

complex, causing dissociation of the inhibitor and activation of NF-kappa-B. The encoded protein itself is found in a complex of proteins. Several transcript variants, some protein-coding and some not, have been found for this gene. [provided by RefSeq, Sep 2011],IKBKB,IKK-beta,IKK2,IKKB,IMD15,NFKB1KB,IKK beta,Apoptosis,Apoptosis\_Inhibition of Apoptosis,B Cell Receptor Signaling Pathway,Cardiovascular,Cell Biology & Developmental Biology,Cell Intrinsic Innate Immunity Signaling Pathway,Death Receptor Signaling Pathway,Endocrine & Metabolism,Immunology & Inflammation,Innate Immunity\_TLR Signaling,Insulin Receptor Signaling Pathway,Kinase,Kinase\_Serine/threonine kinases,NF-kB Signaling Pathway,Signal Transduction,T Cell Receptor Signaling Pathway,Toll-like Receptor Signaling Pathway,IKBKB

Molecular Weight: 87kDa

Gene ID: 3551

UniProt: [O14920](#)

Pathways: [NF-kappaB Signaling](#), [RTK Signaling](#), [TCR Signaling](#), [TLR Signaling](#), [Fc-epsilon Receptor Signaling Pathway](#), [Neurotrophin Signaling Pathway](#), [Activation of Innate immune Response](#), [Production of Molecular Mediator of Immune Response](#), [Hepatitis C](#), [Toll-Like Receptors Cascades](#), [BCR Signaling](#), [Ubiquitin Proteasome Pathway](#), [S100 Proteins](#)

## Application Details

---

Application Notes: WB,1:500 - 1:2000,IHC,1:50 - 1:200,IF,1:50 - 1:200

Restrictions: For Research Use only

## Handling

---

Format: Liquid

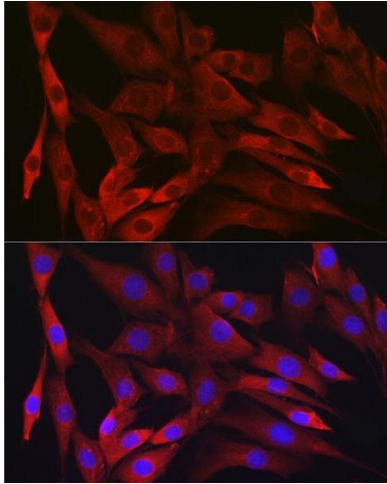
Buffer: PBS with 0.02 % sodium azide,0.05 % BSA,50 % glycerol, pH 7.3.

Preservative: Sodium azide

Precaution of Use: This product contains Sodium azide: a POISONOUS AND HAZARDOUS SUBSTANCE which should be handled by trained staff only.

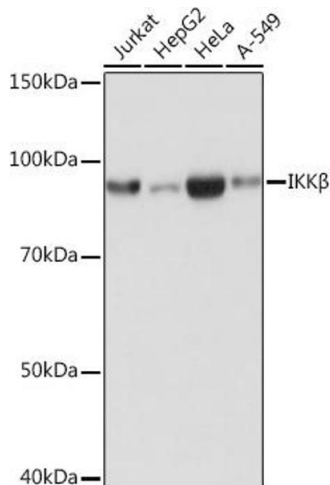
Storage: -20 °C

Storage Comment: Store at -20°C. Avoid freeze / thaw cycles.



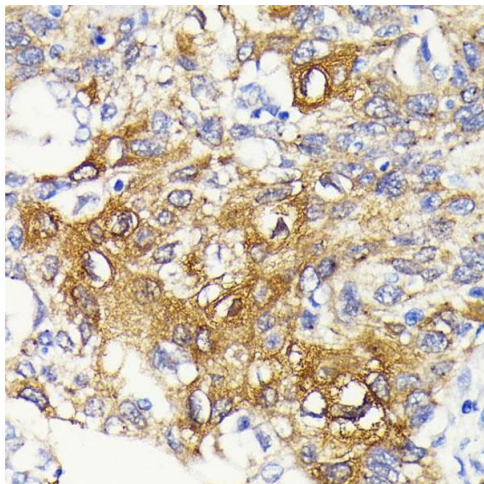
### Immunofluorescence

**Image 1.** Immunofluorescence analysis of NIH/3T3 cells using IKK $\beta$  Rabbit mAb (ABIN7267873) at dilution of 1:100 (40x lens). Blue: DAPI for nuclear staining.



### Western Blotting

**Image 2.** Western blot analysis of extracts of various cell lines, using IKK $\beta$  antibody (ABIN7267873) at 1:1000 dilution. Secondary antibody: HRP Goat Anti-Rabbit IgG (H+L) (ABIN1684268 and ABIN3020597) at 1:10000 dilution. Lysates/proteins: 25  $\mu$ g per lane. Blocking buffer: 3% nonfat dry milk in TBST. Detection: ECL Basic Kit (RM00020). Exposure time: 1s.



### Immunohistochemistry

**Image 3.** Immunohistochemistry of paraffin-embedded human lung cancer using IKK $\beta$  antibody (ABIN7267873) at dilution of 1:100 (40x lens). Perform microwave antigen retrieval with 10 mM PBS buffer pH 7.2 before commencing with IHC staining protocol.

Please check the [product details page](#) for more images. Overall 4 images are available for ABIN7267873.