



[Go to Product page](#)

Datasheet for ABIN7267883
anti-INPP5E antibody (AA 510-630)

3 Images

Overview

Quantity:	100 µL
Target:	INPP5E
Binding Specificity:	AA 510-630
Reactivity:	Human
Host:	Rabbit
Clonality:	Polyclonal
Conjugate:	This INPP5E antibody is un-conjugated
Application:	Western Blotting (WB), Immunofluorescence (IF)

Product Details

Purpose:	INPP5E Rabbit pAb
Immunogen:	Recombinant fusion protein containing a sequence corresponding to amino acids 510-630 of human INPP5E (NP_063945.2).
Sequence:	LIREMRKGSIFKGFQEPDIHFLPSYKFDIGKDTYDSTSKQRTPSYTDRVLYRSRHKGDIC PVSYS SCPGIKTS DHRPVYGLFRVKVRPGRDNIPLAAGKFDRELYLLGIKRRISKEIQRQQ
Isotype:	IgG
Cross-Reactivity:	Human, Mouse, Rat
Characteristics:	Polyclonal Antibodies
Purification:	Affinity purification

Target Details

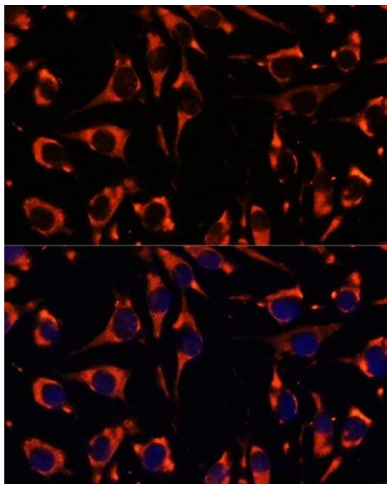
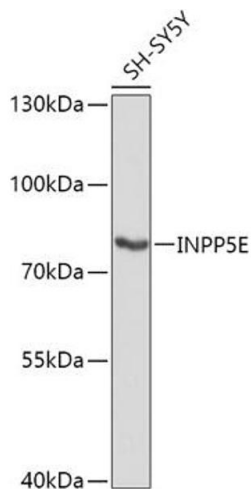
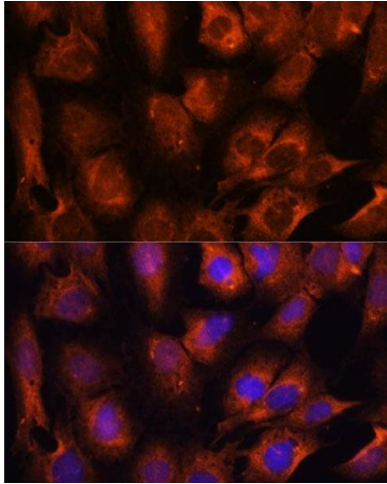
Target:	INPP5E
Alternative Name:	INPP5E (INPP5E Products)
Background:	<p>The protein encoded by this gene is an inositol 1,4,5-trisphosphate (InsP3) 5-phosphatase. InsP3 5-phosphatases hydrolyze Ins(1,4,5)P3, which mobilizes intracellular calcium and acts as a second messenger mediating cell responses to various stimulation. Studies of the mouse counterpart suggest that this protein may hydrolyze phosphatidylinositol 3,4,5-trisphosphate and phosphatidylinositol 3,5-bisphosphate on the cytoplasmic Golgi membrane and thereby regulate Golgi-vesicular trafficking. Mutations in this gene cause Joubert syndrome, a clinically and genetically heterogenous group of disorders characterized by midbrain-hindbrain malformation and various associated ciliopathies that include retinal dystrophy, nephronophthisis, liver fibrosis and polydactyly. Alternative splicing results in multiple transcript variants encoding different isoforms. [provided by RefSeq, Jan 2016],CORS1,CPD4,JBTS1,MORMS,PPI5PIV,pharbin,INPP5E,Signal Transduction,Endocrine & Metabolism,Lipid Metabolism,INPP5E</p>
Molecular Weight:	66kDa/70kDa
Gene ID:	56623
UniProt:	Q9NRR6

Application Details

Application Notes:	WB,1:500 - 1:2000,IF,1:50 - 1:200
Restrictions:	For Research Use only

Handling

Format:	Liquid
Buffer:	PBS with 0.02 % sodium azide,50 % glycerol, pH 7.3.
Preservative:	Sodium azide
Precaution of Use:	This product contains Sodium azide: a POISONOUS AND HAZARDOUS SUBSTANCE which should be handled by trained staff only.
Storage:	-20 °C
Storage Comment:	Store at -20°C. Avoid freeze / thaw cycles.



Immunofluorescence

Image 1. Immunofluorescence analysis of C6 cells using INPP5E antibody (ABIN7267883) at dilution of 1:100. Blue: DAPI for nuclear staining.

Western Blotting

Image 2. Western blot analysis of extracts of SH-SY5Y cells, using INPP5E antibody (ABIN7267883) at 1:1000 dilution. Secondary antibody: HRP Goat Anti-Rabbit IgG (H+L) (ABIN1684268 and ABIN3020597) at 1:10000 dilution. Lysates/proteins: 25 µg per lane. Blocking buffer: 3 % nonfat dry milk in TBST. Detection: ECL Basic Kit (RM00020). Exposure time: 3s.

Immunofluorescence

Image 3. Immunofluorescence analysis of L929 cells using INPP5E antibody (ABIN7267883) at dilution of 1:100. Blue: DAPI for nuclear staining.