



[Go to Product page](#)

Datasheet for ABIN7267903

anti-IGF2BP2 antibody

2 Images

Overview

Quantity:	100 µL
Target:	IGF2BP2
Reactivity:	Human
Host:	Rabbit
Clonality:	Monoclonal
Conjugate:	This IGF2BP2 antibody is un-conjugated
Application:	Western Blotting (WB), Immunohistochemistry (IHC)

Product Details

Purpose:	IGF2BP2/IMP2 Rabbit mAb
Immunogen:	A synthesized peptide derived from human IGF2BP2/IGF2BP2/IMP2
Isotype:	IgG
Cross-Reactivity:	Human
Characteristics:	Monoclonal Antibodies
Purification:	Affinity purification

Target Details

Target:	IGF2BP2
Alternative Name:	IGF2BP2 (IGF2BP2 Products)
Background:	This gene encodes a protein that binds the 5' UTR of insulin-like growth factor 2 (IGF2) mRNA

Target Details

and regulates its translation. It plays an important role in metabolism and variation in this gene is associated with susceptibility to diabetes. Alternative splicing and promoter usage results in multiple transcript variants. Related pseudogenes are found on several chromosomes.

[provided by RefSeq, Sep 2016],IMP-2, IMP2, VICKZ2,Cell Biology & Developmental Biology,Endocrine & Metabolism,Endocrine and metabolic diseases,Endocrine and metabolic diseases_Metabolic disorders,Epigenetics & Nuclear Signaling,Growth factors,Immunology & Inflammation,RNA Binding,Signal Transduction,IGF2BP2

Molecular Weight: 66,62kDa

Gene ID: 10644

UniProt: [Q9Y6M1](#)

Application Details

Application Notes: WB,1:500 - 1:2000,IHC,1:50 - 1:200

Restrictions: For Research Use only

Handling

Format: Liquid

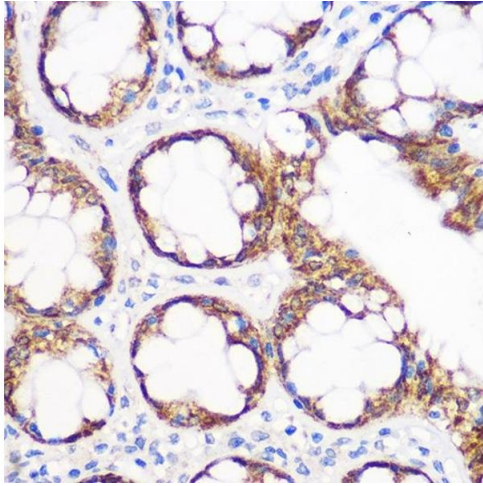
Buffer: PBS with 0.02 % sodium azide,0.05 % BSA,50 % glycerol, pH 7.3.

Preservative: Sodium azide

Precaution of Use: This product contains Sodium azide: a POISONOUS AND HAZARDOUS SUBSTANCE which should be handled by trained staff only.

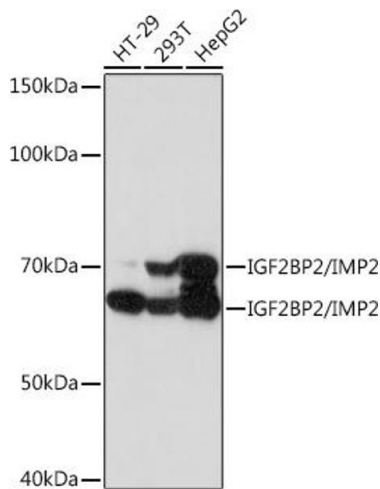
Storage: -20 °C

Storage Comment: Store at -20°C. Avoid freeze / thaw cycles.



Immunohistochemistry

Image 1. Immunohistochemistry of paraffin-embedded human colon using IGF2BP2/IGF2BP2/IMP2 Rabbit mAb (ABIN7267903) at dilution of 1:100 (40x lens). Perform microwave antigen retrieval with 10 mM Tris/EDTA buffer pH 9.0 before commencing with IHC staining protocol.



Western Blotting

Image 2. Western blot analysis of extracts of various cell lines, using IGF2BP2/IGF2BP2/IMP2 Rabbit mAb (ABIN7267903) at 1:1000 dilution. Secondary antibody: HRP Goat Anti-Rabbit IgG (H+L) (ABIN1684268 and ABIN3020597) at 1:10000 dilution. Lysates/proteins: 25 µg per lane. Blocking buffer: 3% nonfat dry milk in TBST. Detection: ECL Basic Kit (RM00020). Exposure time: 30s.