

Datasheet for ABIN7267904

**anti-IGF2BP3 antibody****2** Images[Go to Product page](#)

## Overview

Quantity:	100 µL
Target:	IGF2BP3
Reactivity:	Human
Host:	Rabbit
Clonality:	Monoclonal
Conjugate:	This IGF2BP3 antibody is un-conjugated
Application:	Western Blotting (WB), Immunohistochemistry (IHC)

## Product Details

Purpose:	IMP3 Rabbit mAb
Immunogen:	A synthesized peptide derived from human IMP3
Isotype:	IgG
Cross-Reactivity:	Human
Characteristics:	Monoclonal Antibodies
Purification:	Affinity purification

## Target Details

Target:	IGF2BP3
Alternative Name:	IGF2BP3 ( <a href="#">IGF2BP3 Products</a> )
Background:	The protein encoded by this gene is primarily found in the nucleolus, where it can bind to the 5'

## Target Details

UTR of the insulin-like growth factor II leader 3 mRNA and may repress translation of insulin-like growth factor II during late development. The encoded protein contains several KH domains, which are important in RNA binding and are known to be involved in RNA synthesis and metabolism. A pseudogene exists on chromosome 7, and there are putative pseudogenes on other chromosomes. [provided by RefSeq, Jul 2008],CT98, IMP-3, IMP3, KOC, KOC1, VICKZ3,Cancer,Epigenetics & Nuclear Signaling,RNA Binding,Tumor biomarkers,IGF2BP3

Molecular Weight: 69kDa

Gene ID: 10643

UniProt: [O00425](#)

## Application Details

Application Notes: WB,1:500 - 1:2000,IHC,1:50 - 1:200

Restrictions: For Research Use only

## Handling

Format: Liquid

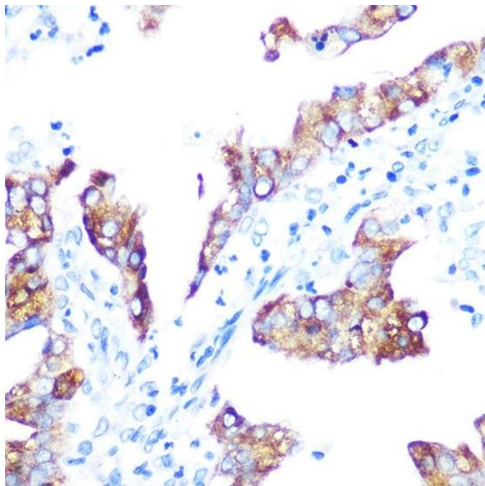
Buffer: PBS with 0.02 % sodium azide,0.05 % BSA,50 % glycerol, pH 7.3.

Preservative: Sodium azide

Precaution of Use: This product contains Sodium azide: a POISONOUS AND HAZARDOUS SUBSTANCE which should be handled by trained staff only.

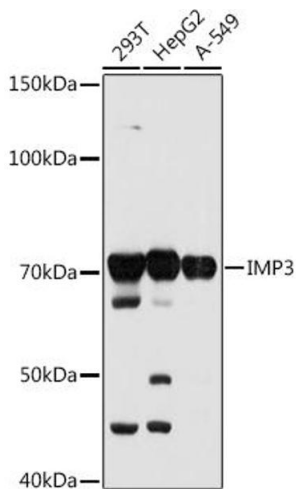
Storage: -20 °C

Storage Comment: Store at -20°C. Avoid freeze / thaw cycles.



### Immunohistochemistry

**Image 1.** Immunohistochemistry of paraffin-embedded human oophoroma using IMP3 Rabbit mAb (ABIN7267904) at dilution of 1:100 (40x lens). Perform microwave antigen retrieval with 10 mM PBS buffer pH 7.2 before commencing with IHC staining protocol.



### Western Blotting

**Image 2.** Western blot analysis of extracts of various cell lines, using IMP3 antibody (ABIN7267904) at 1:1000 dilution. Secondary antibody: HRP Goat Anti-Rabbit IgG (H+L) (ABIN1684268 and ABIN3020597) at 1:10000 dilution. Lysates/proteins: 25 µg per lane. Blocking buffer: 3 % nonfat dry milk in TBST. Detection: ECL Basic Kit (RM00020). Exposure time: 10s.