



[Go to Product page](#)

Datasheet for ABIN7267906

anti-IGFBPI antibody

2 Images

Overview

Quantity:	100 µL
Target:	IGFBPI
Reactivity:	Human
Host:	Rabbit
Clonality:	Monoclonal
Conjugate:	This IGFBPI antibody is un-conjugated
Application:	Western Blotting (WB)

Product Details

Purpose:	IGFBP1 Rabbit mAb
Immunogen:	A synthesized peptide derived from human IGFBP1
Isotype:	IgG
Cross-Reactivity:	Human, Mouse
Characteristics:	Monoclonal Antibodies
Purification:	Affinity purification

Target Details

Target:	IGFBPI
Alternative Name:	IGFBP1 (IGFBPI Products)
Background:	This gene is a member of the insulin-like growth factor binding protein (IGFBP) family and

Target Details

encodes a protein with an IGFBP domain and a thyroglobulin type-I domain. The protein binds both insulin-like growth factors (IGFs) I and II and circulates in the plasma. Binding of this protein prolongs the half-life of the IGFs and alters their interaction with cell surface receptors. [provided by RefSeq, Jul 2008],AFBP, IBP1, IGF-BP25, PP12, hIGFBP-1,Cardiovascular,Cell Biology & Developmental Biology,Endocrine & Metabolism,Endocrine and metabolic diseases,Endocrine and metabolic diseases_Diabetes,Growth factors,Signal Transduction,IGFBP1

Molecular Weight: 30kDa

Gene ID: 3484

UniProt: [P08833](#)

Pathways: [Myometrial Relaxation and Contraction](#), [ER-Nucleus Signaling](#), [Growth Factor Binding](#)

Application Details

Application Notes: WB,1:500 - 1:2000

Restrictions: For Research Use only

Handling

Format: Liquid

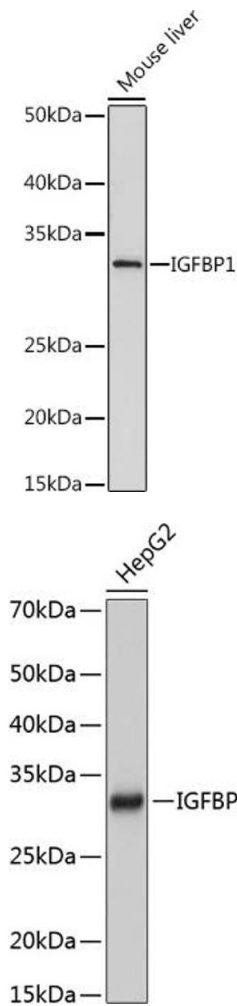
Buffer: PBS with 0.02 % sodium azide,0.05 % BSA,50 % glycerol, pH 7.3.

Preservative: Sodium azide

Precaution of Use: This product contains Sodium azide: a POISONOUS AND HAZARDOUS SUBSTANCE which should be handled by trained staff only.

Storage: -20 °C

Storage Comment: Store at -20°C. Avoid freeze / thaw cycles.



Western Blotting

Image 1. Western blot analysis of extracts of Mouse liver, using IGFBP1 antibody (ABIN7267906) at 1:500 dilution. Secondary antibody: HRP Goat Anti-Rabbit IgG (H+L) (ABIN1684268 and ABIN3020597) at 1:10000 dilution. Lysates/proteins: 25 µg per lane. Blocking buffer: 3 % nonfat dry milk in TBST. Detection: ECL Basic Kit (RM00020). Exposure time: 3 min.

Western Blotting

Image 2. Western blot analysis of extracts of HepG2 cells, using IGFBP1 Rabbit mAb (ABIN7267906) at 1:1000 dilution. Secondary antibody: HRP Goat Anti-Rabbit IgG (H+L) (ABIN1684268 and ABIN3020597) at 1:10000 dilution. Lysates/proteins: 25 µg per lane. Blocking buffer: 3 % nonfat dry milk in TBST. Detection: ECL Basic Kit (RM00020). Exposure time: 1 s.