



[Go to Product page](#)

Datasheet for ABIN7267915  
**anti-INTS8 antibody (AA 150-250)**

1 Image

Overview

Quantity:	100 µL
Target:	INTS8
Binding Specificity:	AA 150-250
Reactivity:	Human
Host:	Rabbit
Clonality:	Polyclonal
Conjugate:	This INTS8 antibody is un-conjugated
Application:	Western Blotting (WB)

Product Details

Purpose:	INTS8 Rabbit pAb
Immunogen:	A synthetic peptide corresponding to a sequence within amino acids 150-250 of human INTS8 (NP_060334.2).
Sequence:	AIRTIVQSSF PVKQAKPGPP QLSVMNQMQQ EKELTENILK VLKEQAADSI LVLEAALKLN KDLYVHTMRT LDLLAMEPGM VNGETESSTA GLKVKTEEMQ C
Isotype:	IgG
Cross-Reactivity:	Human, Mouse
Characteristics:	Polyclonal Antibodies
Purification:	Affinity purification

## Target Details

---

Target:	INTS8
Alternative Name:	INTS8 ( <a href="#">INTS8 Products</a> )
Background:	This gene encodes a subunit of the Integrator complex which is involved in the cleavage of small nuclear RNAs U1 and U2 within the nucleus. The encoded protein associates with RNA polymerase II and is recruited to the U1 and U2 small nuclear RNA genes. Alternative splicing results in multiple transcript variants. [provided by RefSeq, Nov 2012],C8orf52,INT8,INTS8,Epigenetics & Nuclear Signaling,Cell Biology & Developmental Biology,INTS8
Gene ID:	55656
UniProt:	<a href="#">Q75QN2</a>

## Application Details

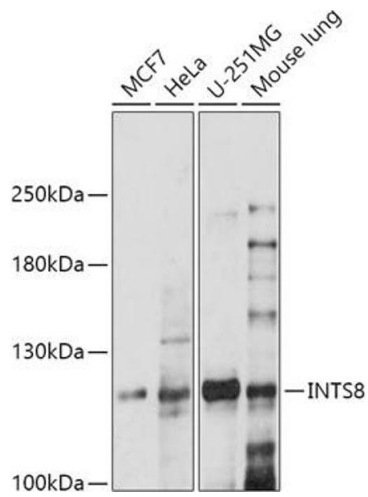
---

Application Notes:	WB,1:500 - 1:2000
Restrictions:	For Research Use only

## Handling

---

Format:	Liquid
Buffer:	PBS with 0.02 % sodium azide,50 % glycerol, pH 7.3.
Preservative:	Sodium azide
Precaution of Use:	This product contains Sodium azide: a POISONOUS AND HAZARDOUS SUBSTANCE which should be handled by trained staff only.
Storage:	-20 °C
Storage Comment:	Store at -20°C. Avoid freeze / thaw cycles.



### Western Blotting

**Image 1.** Western blot analysis of extracts of various cell lines, using INTS8 antibody (ABIN7267915) at 1:1000 dilution. Secondary antibody: HRP Goat Anti-Rabbit IgG (H+L) (ABIN1684268 and ABIN3020597) at 1:10000 dilution. Lysates/proteins: 25 µg per lane. Blocking buffer: 3 % nonfat dry milk in TBST. Detection: ECL Basic Kit (RM00020). Exposure time: 90s.