



[Go to Product page](#)

Datasheet for ABIN7267919  
**anti-ITFG1 antibody (AA 313-612)**

1 Image

Overview

Quantity:	100 µL
Target:	ITFG1
Binding Specificity:	AA 313-612
Reactivity:	Human
Host:	Rabbit
Clonality:	Polyclonal
Conjugate:	This ITFG1 antibody is un-conjugated
Application:	Western Blotting (WB)

Product Details

Purpose:	ITFG1 Rabbit pAb
Immunogen:	Recombinant fusion protein containing a sequence corresponding to amino acids 313-612 of human ITFG1 (NP_110417.2).
Sequence:	LWGFVPFVDE QQPTEIPIPI TLHIGDYNMD GYPDALVILK NTSGSNQQAF LLENVPCNNA SCEEARRMFK VYWELTDLNQ IKDAMVATFF DIYEDGILDI VVLSKGYTKN DFAIHTLKNN FEADAYFVKV IVLSGLCSND CPRKITPFGV NQPGPYIMYT TVDANGYLKN GSAGQLSQSA HLALQLPYNV LGLGRSANFL DHLYVGIPRP SGEKSIRKQE WTAIIPNSQL IVIPYPHNVP RSWSAKLYLT PSNIVLLTAI ALIGVCVFIL AIIGILHWQE KKADDREKRQ EAHRFHFDAM
Isotype:	IgG
Cross-Reactivity:	Human, Mouse, Rat
Characteristics:	Polyclonal Antibodies

## Product Details

---

Purification: Affinity purification

## Target Details

---

Target: ITFG1

Alternative Name: ITFG1 ([ITFG1 Products](#))

Background: Modulator of T-cell function. Has a protective effect in graft versus host disease model (By similarity.,ITFG1,2310047C21Rik,CDA08,LNKN-1,TIP,Immunology & Inflammation,ITFG1

Molecular Weight: 68kDa

Gene ID: 81533

UniProt: [Q8TB96](#)

## Application Details

---

Application Notes: WB,1:500 - 1:2000

Restrictions: For Research Use only

## Handling

---

Format: Liquid

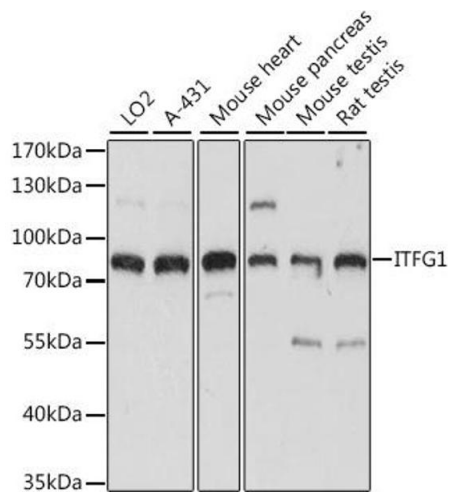
Buffer: PBS with 0.02 % sodium azide,50 % glycerol, pH 7.3.

Preservative: Sodium azide

Precaution of Use: This product contains Sodium azide: a POISONOUS AND HAZARDOUS SUBSTANCE which should be handled by trained staff only.

Storage: -20 °C

Storage Comment: Store at -20°C. Avoid freeze / thaw cycles.



### Western Blotting

**Image 1.** Western blot analysis of extracts of various cell lines, using ITFG1 antibody (ABIN7267919) at 1:1000 dilution. Secondary antibody: HRP Goat Anti-Rabbit IgG (H+L) (ABIN1684268 and ABIN3020597) at 1:10000 dilution. Lysates/proteins: 25 µg per lane. Blocking buffer: 3 % nonfat dry milk in TBST. Detection: ECL Basic Kit (RM00020). Exposure time: 3s.