



[Go to Product page](#)

Datasheet for ABIN7267920 anti-ITFG3 antibody (AA 70-400)

1 Image

Overview

Quantity:	100 µL
Target:	ITFG3
Binding Specificity:	AA 70-400
Reactivity:	Human
Host:	Rabbit
Clonality:	Polyclonal
Conjugate:	This ITFG3 antibody is un-conjugated
Application:	Western Blotting (WB)

Product Details

Purpose:	FAM234A Rabbit pAb
Immunogen:	Recombinant fusion protein containing a sequence corresponding to amino acids 70-400 of human FAM234A (NP_114428.1).
Sequence:	IPCPDRPASQ RMWRIDYSAA VIYDFLAVDD INGDRIQDVL FLYKNTNSSN NFSRSCVDEG FSSPCTFAAA VSGANGSTLW ERPVAQDVAL VECAPVQPRG SEAPSACILV GRPSSFIAVN LFTGETLWNH SSSFSGNASI LSPLLQVPDV DGDGAPDLLV LTQEREEVSG HLYSGSTGHQ IGLRGSLGVD GESGFLHVT RTGAHYILFP CASSLCGCSV KGLYEKVTGS GGPFKSDPHW ESMLNATRR MLSSHSSGAVR YLMHVPGNAG ADVLLVGSEA FVLLDGQELT PRWTPKAAHV LRKPIFGRYK PDTLAVAVEN GTGTDRQILF L
Isotype:	IgG
Cross-Reactivity:	Human

Product Details

Characteristics: Polyclonal Antibodies

Purification: Affinity purification

Target Details

Target: ITFG3

Alternative Name: FAM234A ([ITFG3 Products](#))

Background: FAM234A,C16orf9,ITFG3,gs19,Cell Biology & Developmental Biology,FAM234A

Molecular Weight: 58kDa/59kDa

Gene ID: 83986

UniProt: [Q9H0X4](#)

Application Details

Application Notes: WB,1:500 - 1:2000

Restrictions: For Research Use only

Handling

Format: Liquid

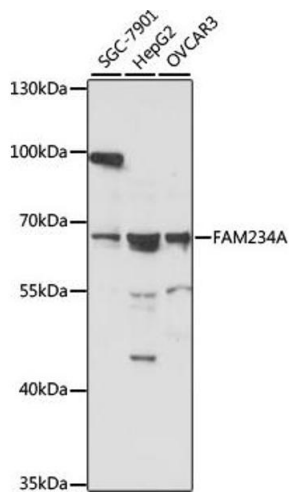
Buffer: PBS with 0.02 % sodium azide,50 % glycerol, pH 7.3.

Preservative: Sodium azide

Precaution of Use: This product contains Sodium azide: a POISONOUS AND HAZARDOUS SUBSTANCE which should be handled by trained staff only.

Storage: -20 °C

Storage Comment: Store at -20°C. Avoid freeze / thaw cycles.



Western Blotting

Image 1. Western blot analysis of extracts of various cell lines, using FA antibody (ABIN7267920) at 1:1000 dilution. Secondary antibody: HRP Goat Anti-Rabbit IgG (H+L) (ABIN1684268 and ABIN3020597) at 1:10000 dilution. Lysates/proteins: 25 µg per lane. Blocking buffer: 3 % nonfat dry milk in TBST. Detection: ECL Basic Kit (RM00020). Exposure time: 3s.