

Datasheet for ABIN7267925

anti-Integrin Alpha2b antibody**2** Images[Go to Product page](#)

Overview

Quantity:	100 µL
Target:	Integrin Alpha2b (CD41)
Reactivity:	Human
Host:	Rabbit
Clonality:	Monoclonal
Conjugate:	This Integrin Alpha2b antibody is un-conjugated
Application:	Western Blotting (WB), Immunohistochemistry (IHC)

Product Details

Purpose:	CD41/ITGA2B Rabbit mAb
Immunogen:	A synthesized peptide derived from human CD41/ITGA2B
Isotype:	IgG
Cross-Reactivity:	Human, Mouse, Rat
Characteristics:	Monoclonal Antibodies
Purification:	Affinity purification

Target Details

Target:	Integrin Alpha2b (CD41)
Alternative Name:	ITGA2B (CD41 Products)
Background:	This gene encodes a member of the integrin alpha chain family of proteins. The encoded

Target Details

preproprotein is proteolytically processed to generate light and heavy chains that associate through disulfide linkages to form a subunit of the alpha-IIb/beta-3 integrin cell adhesion receptor. This receptor plays a crucial role in the blood coagulation system, by mediating platelet aggregation. Mutations in this gene are associated with platelet-type bleeding disorders, which are characterized by a failure of platelet aggregation, including Glanzmann thrombasthenia. [provided by RefSeq, Jan 2016],BDPLT16, BDPLT2, CD41, CD41B, GP2B, GPIIb, GT, GTA, HPA3, PPP1R93,Angiogenesis,Blood,Cardiovascular,CDs,Cell Adhesion,Cell Biology & Developmental Biology,Cytoskeleton,G protein signaling,G protein signaling_G-Protein-Coupled Receptors Signaling to MAPK/Erk,Hematopoietic Progenitors,Immunology & Inflammation,MAPK-Erk Signaling Pathway,PI3K-Akt Signaling Pathway,Signal Transduction,Stem Cells,ITGA2B

Molecular Weight: 135kDa

Gene ID: 3674

UniProt: [P08514](#)

Pathways: [Integrin Complex](#)

Application Details

Application Notes: WB,1:500 - 1:2000,IHC,1:50 - 1:200

Restrictions: For Research Use only

Handling

Format: Liquid

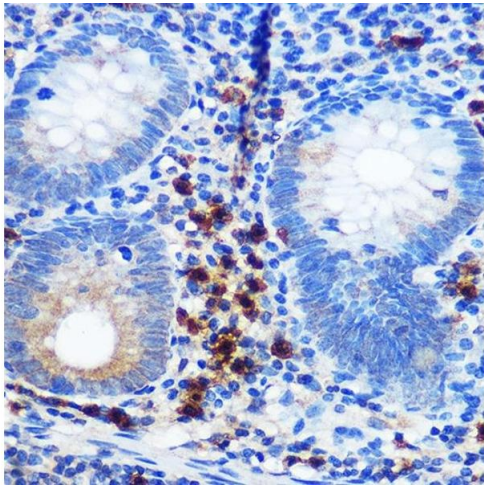
Buffer: PBS with 0.02 % sodium azide,0.05 % BSA,50 % glycerol, pH 7.3.

Preservative: Sodium azide

Precaution of Use: This product contains Sodium azide: a POISONOUS AND HAZARDOUS SUBSTANCE which should be handled by trained staff only.

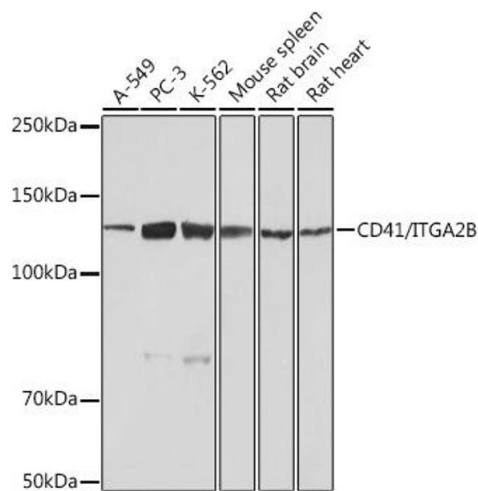
Storage: -20 °C

Storage Comment: Store at -20°C. Avoid freeze / thaw cycles.



Immunohistochemistry

Image 1. Immunohistochemistry of paraffin-embedded human appendix using CD41/ITGB Rabbit mAb (ABIN7267925) at dilution of 1:100 (40x lens). Perform microwave antigen retrieval with 10 mM PBS buffer pH 7.2 before commencing with IHC staining protocol.



Western Blotting

Image 2. Western blot analysis of extracts of various cell lines, using CD41/ITGB Rabbit mAb (ABIN7267925) at 1:1000 dilution. Secondary antibody: HRP Goat Anti-Rabbit IgG (H+L) (ABIN1684268 and ABIN3020597) at 1:10000 dilution. Lysates/proteins: 25 µg per lane. Blocking buffer: 3 % nonfat dry milk in TBST. Detection: ECL Basic Kit (RM00020). Exposure time: 10s.