



Datasheet for ABIN7267926
anti-ITGB1 antibody



[Go to Product page](#)

7 Images

Overview

Quantity:	100 µL
Target:	ITGB1
Reactivity:	Human
Host:	Rabbit
Clonality:	Monoclonal
Conjugate:	This ITGB1 antibody is un-conjugated
Application:	Western Blotting (WB), Immunohistochemistry (IHC)

Product Details

Purpose:	Integrin-β1/CD29 Rabbit mAb
Immunogen:	A synthesized peptide derived from human Integrin beta 1
Isotype:	IgG
Cross-Reactivity:	Human, Mouse, Rat
Characteristics:	Monoclonal Antibodies
Purification:	Affinity purification

Target Details

Target:	ITGB1
Alternative Name:	ITGB1 (ITGB1 Products)
Background:	Integrins are heterodimeric proteins made up of alpha and beta subunits. At least 18 alpha and

Target Details

8 beta subunits have been described in mammals. Integrin family members are membrane receptors involved in cell adhesion and recognition in a variety of processes including embryogenesis, hemostasis, tissue repair, immune response and metastatic diffusion of tumor cells. This gene encodes a beta subunit. Multiple alternatively spliced transcript variants which encode different protein isoforms have been found for this gene. [provided by RefSeq, Jul 2008],CD29,FNRB,GPIIA,MDF2,MSK12,VLA-BETA,VLAB,Integrin beta 1,ITGB1,Integrin β 1,CDs,Cell Adhesion,Cell Biology & Developmental Biology,Cell Type Marker,Cell Type Marker_Neural Stem Cell marker,Cytoskeleton,Embryonic Stem Cells,G protein signaling,G protein signaling_G-Protein-Coupled Receptors Signaling to MAPK/Erk,Immunology & Inflammation,MAPK-Erk Signaling Pathway,Mesenchymal Stem Cells,Neuroscience,PI3K-Akt Signaling Pathway,Signal Transduction,Stem Cells,ITGB1

Molecular Weight: 150kDa

Gene ID: 3688

UniProt: [P05556](#)

Pathways: [Cell-Cell Junction Organization](#), [Regulation of G-Protein Coupled Receptor Protein Signaling](#), [CXCR4-mediated Signaling Events](#), [Signaling of Hepatocyte Growth Factor Receptor](#), [Integrin Complex](#), [SARS-CoV-2 Protein Interactome](#)

Application Details

Application Notes: WB,1:500 - 1:2000,IHC,1:50 - 1:200

Restrictions: For Research Use only

Handling

Format: Liquid

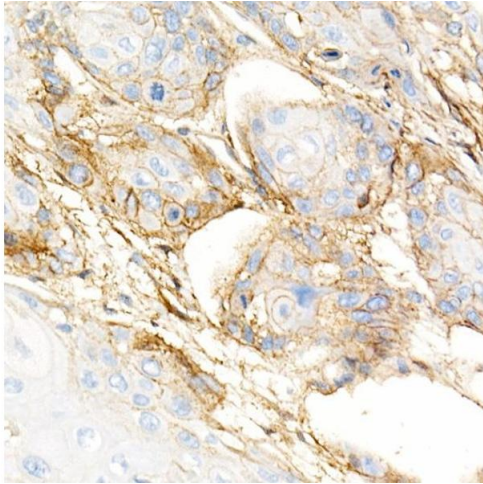
Buffer: PBS with 0.02 % sodium azide,0.05 % BSA,50 % glycerol, pH 7.3.

Preservative: Sodium azide

Precaution of Use: This product contains Sodium azide: a POISONOUS AND HAZARDOUS SUBSTANCE which should be handled by trained staff only.

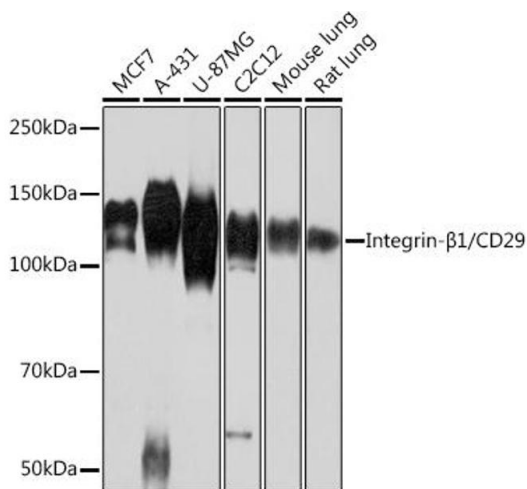
Storage: -20 °C

Storage Comment: Store at -20°C. Avoid freeze / thaw cycles.



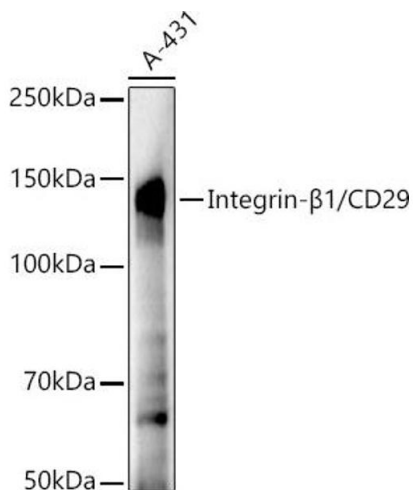
Immunohistochemistry

Image 1. Immunohistochemistry of paraffin-embedded human esophageal cancer using Integrin- β 1/CD29 Rabbit mAb (ABIN7267926) at dilution of 1:5000 (40x lens).



Western Blotting

Image 2. Western blot analysis of extracts of various cell lines, using Integrin- β 1/CD29 antibody (ABIN7267926) at 1:1000 dilution. Secondary antibody: HRP Goat Anti-Rabbit IgG (H+L) (ABIN1684268 and ABIN3020597) at 1:10000 dilution. Lysates/proteins: 25 μ g per lane. Blocking buffer: 3 % nonfat dry milk in TBST. Detection: ECL Basic Kit (RM00020). Exposure time: 3 min.



Western Blotting

Image 3. Western blot analysis of extracts of A-431 cells, using Integrin- β 1/CD29 antibody (ABIN7267926) at 1:20000 dilution. Secondary antibody: HRP Goat Anti-Rabbit IgG (H+L) (ABIN1684268 and ABIN3020597) at 1:10000 dilution. Lysates/proteins: 25 μ g per lane. Blocking buffer: 3 % nonfat dry milk in TBST. Detection: ECL Enhanced Kit (RM00021). Exposure time: 90s.

Please check the [product details page](#) for more images. Overall 7 images are available for ABIN7267926.