

Datasheet for ABIN7267928
anti-Integrin beta 3 antibody

6 Images

[Go to Product page](#)

Overview

Quantity:	100 µL
Target:	Integrin beta 3 (ITGB3)
Reactivity:	Human
Host:	Rabbit
Clonality:	Monoclonal
Conjugate:	This Integrin beta 3 antibody is un-conjugated
Application:	Western Blotting (WB), Immunohistochemistry (IHC), Immunoprecipitation (IP)

Product Details

Purpose:	Integrin beta 3 (ITGB3/CD61) Rabbit mAb
Immunogen:	A synthesized peptide derived from human Integrin beta 3 (ITGB3/CD61) (ITGB3/CD61)
Isotype:	IgG
Cross-Reactivity:	Human, Mouse, Rat
Characteristics:	Monoclonal Antibodies
Purification:	Affinity purification

Target Details

Target:	Integrin beta 3 (ITGB3)
Alternative Name:	ITGB3 (ITGB3 Products)
Background:	The ITGB3 protein product is the integrin beta chain beta 3. Integrins are integral cell-surface

Target Details

proteins composed of an alpha chain and a beta chain. A given chain may combine with multiple partners resulting in different integrins. Integrin beta 3 is found along with the alpha IIb chain in platelets. Integrins are known to participate in cell adhesion as well as cell-surface mediated signalling. [provided by RefSeq, Jul 2008],BDPLT16,BDPLT2,CD61,GP3A,GPIIIa,GT,Integrin beta 3,ITGB3,Angiogenesis,Blood,Cancer,Cardiovascular,Cardiovascular diseases,Cardiovascular diseases_Hypertension,CDs,Cell Adhesion,Cell Biology & Developmental Biology,Cytoskeleton,G protein signaling,G protein signaling_G-Protein-Coupled Receptors Signaling to MAPK/Erk,Immunology & Inflammation,Invasion and Metastasis,MAPK-Erk Signaling Pathway,PI3K-Akt Signaling Pathway,Signal Transduction,ITGB3

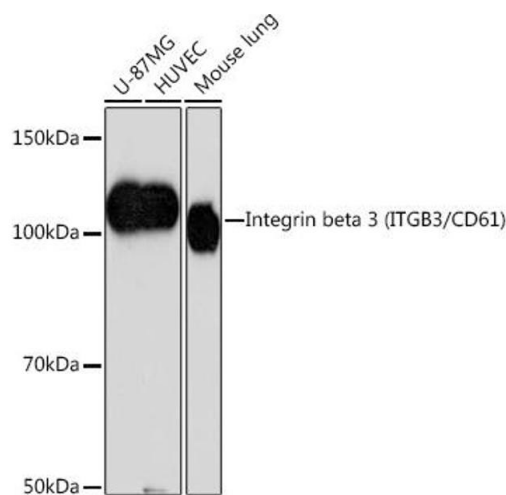
Molecular Weight:	110kDa
Gene ID:	3690
UniProt:	P05106
Pathways:	Regulation of G-Protein Coupled Receptor Protein Signaling , Signaling Events mediated by VEGFR1 and VEGFR2 , Smooth Muscle Cell Migration , Integrin Complex

Application Details

Application Notes:	WB,1:500 - 1:2000,IHC,1:50 - 1:200,IP,1:50 - 1:200
Restrictions:	For Research Use only

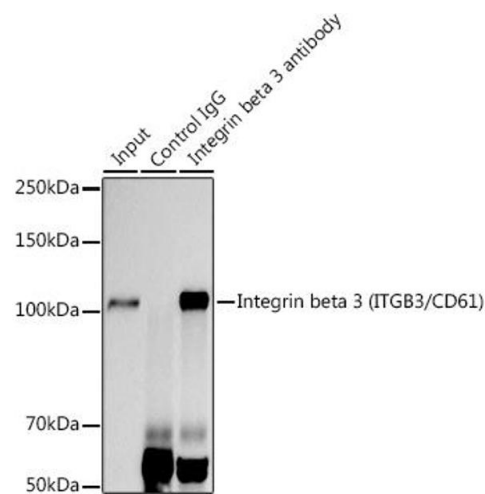
Handling

Format:	Liquid
Buffer:	PBS with 0.02 % sodium azide,0.05 % BSA,50 % glycerol, pH 7.3.
Preservative:	Sodium azide
Precaution of Use:	This product contains Sodium azide: a POISONOUS AND HAZARDOUS SUBSTANCE which should be handled by trained staff only.
Storage:	-20 °C
Storage Comment:	Store at -20°C. Avoid freeze / thaw cycles.



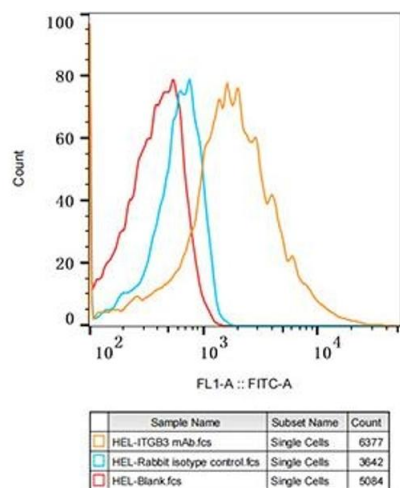
Western Blotting

Image 1. Western blot analysis of extracts of various cell lines, using Integrin beta 3 (ITGB3/CD61) (ITGB3/CD61) antibody (ABIN7267928) at 1:1000 dilution. Secondary antibody: HRP Goat Anti-Rabbit IgG (H+L) (ABIN1684268 and ABIN3020597) at 1:10000 dilution. Lysates/proteins: 25 µg per lane. Blocking buffer: 3 % nonfat dry milk in TBST. Detection: ECL Basic Kit (RM00020). Exposure time: 90s.



Immunoprecipitation

Image 2. Immunoprecipitation analysis of 300 µg extracts of U-87MG cells using 3 µg Integrin beta 3 (ITGB3/CD61) antibody (ABIN7267928). Western blot was performed from the immunoprecipitate using Integrin beta 3 (ITGB3/CD61) antibody (ABIN7267928) at a dilution of 1:1000.



Flow Cytometry

Image 3. Flow cytometry: HEL cells were stained with Rabbit IgG isotype control (, 2.5 µg/mL, blue line) or Integrin beta 3 (ITGB3/CD61) Rabbit mAb (ABIN7267928, 2.5 µg/mL, orange line), followed by FITC conjugated goat anti-rabbit pAb (1:200 dilution) staining. Non-fluorescently stained HEL cells were used as blank control (red line).

Please check the [product details page](#) for more images. Overall 6 images are available for ABIN7267928.