



[Go to Product page](#)

Datasheet for ABIN7267932  
**anti-ITGB6 antibody (AA 732-788)**

1 Image

Overview

Quantity:	100 µL
Target:	ITGB6
Binding Specificity:	AA 732-788
Reactivity:	Human
Host:	Rabbit
Clonality:	Polyclonal
Conjugate:	This ITGB6 antibody is un-conjugated
Application:	Western Blotting (WB)

Product Details

Purpose:	ITGB6 Rabbit pAb
Immunogen:	Recombinant fusion protein containing a sequence corresponding to amino acids 732-788 of human ITGB6 (NP_000879.2).
Sequence:	LLVSFHDRKE VAKFEAERSK AKWQTGTNPL YRGSTSTFKN VTYKHREKQK VDLSTDC
Isotype:	IgG
Cross-Reactivity:	Human, Mouse, Rat
Characteristics:	Polyclonal Antibodies
Purification:	Affinity purification

## Target Details

---

Target:	ITGB6
Alternative Name:	ITGB6 ( <a href="#">ITGB6 Products</a> )
Background:	<p>This gene encodes a protein that is a member of the integrin superfamily. Members of this family are adhesion receptors that function in signaling from the extracellular matrix to the cell. Integrins are heterodimeric integral membrane proteins composed of an alpha chain and a beta chain. The encoded protein forms a dimer with an alpha v chain and this heterodimer can bind to ligands like fibronectin and transforming growth factor beta 1. Alternate splicing results in multiple transcript variants.,ITGB6,Al1H,Signal Transduction,PI3K-Akt Signaling Pathway,MAPK-Erk Signaling Pathway,Cell Biology &amp; Developmental Biology,Cell Adhesion,Cytoskeleton,ITGB6</p>
Molecular Weight:	74kDa/85kDa
Gene ID:	3694
UniProt:	<a href="#">P18564</a>

## Application Details

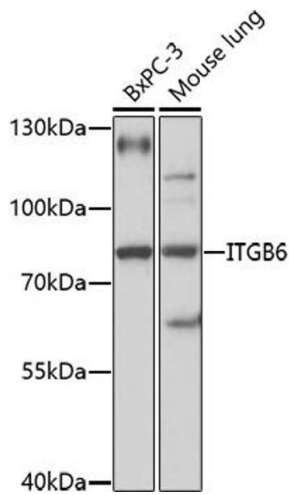
---

Application Notes:	WB,1:500 - 1:2000
Restrictions:	For Research Use only

## Handling

---

Format:	Liquid
Buffer:	PBS with 0.02 % sodium azide,50 % glycerol, pH 7.3.
Preservative:	Sodium azide
Precaution of Use:	This product contains Sodium azide: a POISONOUS AND HAZARDOUS SUBSTANCE which should be handled by trained staff only.
Storage:	-20 °C
Storage Comment:	Store at -20°C. Avoid freeze / thaw cycles.



### Western Blotting

**Image 1.** Western blot analysis of extracts of various cell lines, using ITGB6 antibody (ABIN7267932) at 1:1000 dilution. Secondary antibody: HRP Goat Anti-Rabbit IgG (H+L) (ABIN1684268 and ABIN3020597) at 1:10000 dilution. Lysates/proteins: 25 µg per lane. Blocking buffer: 3 % nonfat dry milk in TBST. Detection: ECL Basic Kit (RM00020). Exposure time: 15s.