



[Go to Product page](#)

Datasheet for ABIN7267948
anti-IFNGR1 antibody

1 Image

Overview

Quantity:	100 µL
Target:	IFNGR1
Reactivity:	Human
Host:	Rabbit
Clonality:	Monoclonal
Conjugate:	This IFNGR1 antibody is un-conjugated
Application:	Western Blotting (WB), Immunofluorescence (IF)

Product Details

Purpose:	IFNGR1 Rabbit mAb
Immunogen:	A synthesized peptide derived from human IFNGR1
Isotype:	IgG
Cross-Reactivity:	Human, Mouse, Rat
Characteristics:	Monoclonal Antibodies
Purification:	Affinity purification

Target Details

Target:	IFNGR1
Alternative Name:	IFNGR1 (IFNGR1 Products)
Background:	This gene (IFNGR1) encodes the ligand-binding chain (alpha) of the gamma interferon receptor.

Target Details

Human interferon-gamma receptor is a heterodimer of IFNGR1 and IFNGR2. A genetic variation in IFNGR1 is associated with susceptibility to Helicobacter pylori infection. In addition, defects in IFNGR1 are a cause of mendelian susceptibility to mycobacterial disease, also known as familial disseminated atypical mycobacterial infection. [provided by RefSeq, Jul 2008],CD119, IFNGR, IMD27A, IMD27B,CDs,Cell Intrinsic Innate Immunity Signaling Pathway,Cytokines,Cytokines_Interferons,Hematopoietic Progenitors,Immunology & Inflammation,Stem Cells,IFNGR1

Molecular Weight: 45-100kDa

Gene ID: 3459

UniProt: [P15260](#)

Pathways: [Interferon-gamma Pathway](#)

Application Details

Application Notes: WB,1:500 - 1:2000,IF,1:50 - 1:200

Restrictions: For Research Use only

Handling

Format: Liquid

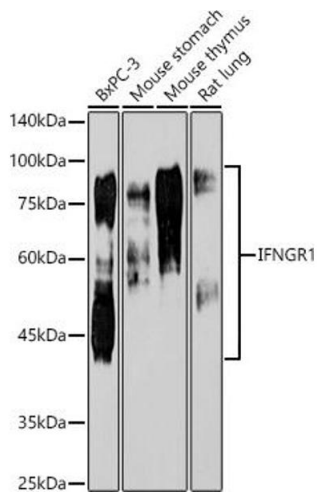
Buffer: PBS with 0.02 % sodium azide,0.05 % BSA,50 % glycerol, pH 7.3.

Preservative: Sodium azide

Precaution of Use: This product contains Sodium azide: a POISONOUS AND HAZARDOUS SUBSTANCE which should be handled by trained staff only.

Storage: -20 °C

Storage Comment: Store at -20°C. Avoid freeze / thaw cycles.



Western Blotting

Image 1. Western blot analysis of extracts of various cell lines, using IFNGR1 antibody at 1:1000 dilution. Secondary antibody: HRP Goat Anti-Rabbit IgG (H+L) (ABIN1684268 and ABIN3020597) at 1:10000 dilution. Lysates/proteins: 25 µg per lane. Blocking buffer: 3% nonfat dry milk in TBST. Detection: ECL Enhanced Kit (RM00021). Exposure time: 180s.