

Datasheet for ABIN7267949
anti-IFITM2 antibody (AA 1-100)[Go to Product page](#)

1 Image

Overview

Quantity:	100 µL
Target:	IFITM2
Binding Specificity:	AA 1-100
Reactivity:	Human
Host:	Rabbit
Clonality:	Polyclonal
Conjugate:	This IFITM2 antibody is un-conjugated
Application:	Western Blotting (WB)

Product Details

Purpose:	IFITM2 Rabbit pAb
Immunogen:	A synthetic peptide corresponding to a sequence within amino acids 1-100 of human IFITM2 (NP_006426.2).
Sequence:	MNHIVQTFSP VNSGQPPNYE MLKEEQEVAM LGVPHNPAPP MSTVIHIRSE TSPVDHVVWS LFNTLFMNTC CLGFIAFAYS VKSRDRKMVG DVTGAQAYAS
Isotype:	IgG
Cross-Reactivity:	Human
Characteristics:	Polyclonal Antibodies
Purification:	Affinity purification

Target Details

Target:	IFITM2
Alternative Name:	IFITM2 (IFITM2 Products)
Background:	IFN-induced antiviral protein which inhibits the entry of viruses to the host cell cytoplasm, permitting endocytosis, but preventing subsequent viral fusion and release of viral contents into the cytosol. Active against multiple viruses, including influenza A virus, SARS coronaviruses (SARS-CoV and SARS-CoV-2, Marburg virus (MARV, Ebola virus (EBOV, Dengue virus (DNV, West Nile virus (WNV, human immunodeficiency virus type 1 (HIV-1, hepatitis C virus (HCV and vesicular stomatitis virus (VSV. Can inhibit: influenza virus hemagglutinin protein-mediated viral entry, MARV and EBOV GP1,2-mediated viral entry, SARS-CoV and SARS-CoV-2 S protein-mediated viral entry and VSV G protein-mediated viral entry. Induces cell cycle arrest and mediates apoptosis by caspase activation and in p53-independent manner. In hepatocytes, IFITM proteins act in a coordinated manner to restrict HCV infection by targeting the endocytosed HCV virion for lysosomal degradation. IFITM2 and IFITM3 display anti-HCV activity that may complement the anti-HCV activity of IFITM1 by inhibiting the late stages of HCV entry, possibly in a coordinated manner by trapping the virion in the endosomal pathway and targeting it for degradation at the lysosome.,IFITM2,1-8D,DSPA2c,Cancer,Tumor immunology,Tumor-associated antigens,Immunology & Inflammation,Cytokines,Interferons,Cell Intrinsic Innate Immunity Signaling Pathway,IFITM2
Molecular Weight:	14kDa
Gene ID:	10581
UniProt:	Q01629

Application Details

Application Notes:	WB,1:500 - 1:2000
Restrictions:	For Research Use only

Handling

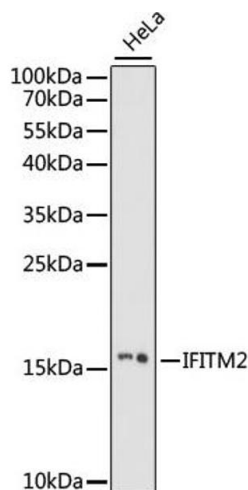
Format:	Liquid
Buffer:	PBS with 0.02 % sodium azide,50 % glycerol, pH 7.3.
Preservative:	Sodium azide
Precaution of Use:	This product contains Sodium azide: a POISONOUS AND HAZARDOUS SUBSTANCE which should be handled by trained staff only.

Handling

Storage: -20 °C

Storage Comment: Store at -20°C. Avoid freeze / thaw cycles.

Images



Western Blotting

Image 1. Western blot analysis of extracts of HeLa cells, using IFITM2 antibody (ABIN7267949) at 1:1000 dilution. Secondary antibody: HRP Goat Anti-Rabbit IgG (H+L) (ABIN1684268 and ABIN3020597) at 1:10000 dilution. Lysates/proteins: 25 µg per lane. Blocking buffer: 3 % nonfat dry milk in TBST. Detection: ECL Basic Kit (RM00020). Exposure time: 60s.