



[Go to Product page](#)

Datasheet for ABIN7267966
anti-IFNA21 antibody (C-Term)

1 Image

Overview

Quantity:	100 µL
Target:	IFNA21 (IFNa21)
Binding Specificity:	C-Term
Reactivity:	Human
Host:	Rabbit
Clonality:	Polyclonal
Conjugate:	This IFNA21 antibody is un-conjugated
Application:	Western Blotting (WB)

Product Details

Purpose:	IFNA21 Rabbit pAb
Immunogen:	A synthetic peptide corresponding to a sequence within amino acids 100 to the C-terminus of human IFNA21 (NP_002166.2).
Sequence:	WEQSLLEKFS TELNQLNDL EACVIQEVGV EETPLMNVDS ILAVKKYFQR ITLYLTEKKY SPCAWEVVRA EIMRSFSLSK IFQERLRRKE
Isotype:	IgG
Cross-Reactivity:	Mouse
Characteristics:	Polyclonal Antibodies
Purification:	Affinity purification

Target Details

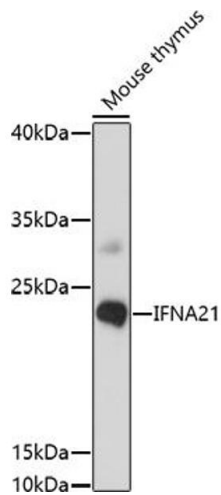
Target:	IFNA21 (IFNa21)
Alternative Name:	IFNA21 (IFNa21 Products)
Background:	This gene is a member of the alpha interferon gene cluster on the short arm of chromosome 9. Interferons are cytokines produced in response to viral infection that mediate the immune response and interfere with viral replication. The encoded protein is a type I interferon and may play a specific role in the antiviral response to rubella virus.,IFNA21,IFN-alpha,LeIF F,IeIF-F,Cancer,Tumor immunology,Immunology & Inflammation,Cytokines,Interferons,Cell Intrinsic Innate Immunity Signaling Pathway,IFNA21
Gene ID:	3452
UniProt:	P01568
Pathways:	JAK-STAT Signaling , Hepatitis C

Application Details

Application Notes:	WB,1:500 - 1:2000
Restrictions:	For Research Use only

Handling

Format:	Liquid
Buffer:	PBS with 0.02 % sodium azide,50 % glycerol, pH 7.3.
Preservative:	Sodium azide
Precaution of Use:	This product contains Sodium azide: a POISONOUS AND HAZARDOUS SUBSTANCE which should be handled by trained staff only.
Storage:	-20 °C
Storage Comment:	Store at -20°C. Avoid freeze / thaw cycles.



Western Blotting

Image 1. Western blot analysis of extracts of mouse thymus, using IFN antibody (ABIN7267966) at 1:1000 dilution. Secondary antibody: HRP Goat Anti-Rabbit IgG (H+L) (ABIN1684268 and ABIN3020597) at 1:10000 dilution. Lysates/proteins: 25 µg per lane. Blocking buffer: 3 % nonfat dry milk in TBST. Detection: ECL Basic Kit (RM00020). Exposure time: 90s.