



[Go to Product page](#)

Datasheet for ABIN7267974
anti-IL1RL1 antibody (AA 19-328)

1 Image

Overview

Quantity:	100 µL
Target:	IL1RL1
Binding Specificity:	AA 19-328
Reactivity:	Human
Host:	Rabbit
Clonality:	Polyclonal
Conjugate:	This IL1RL1 antibody is un-conjugated
Application:	Western Blotting (WB)

Product Details

Purpose:	IL1RL1 Rabbit pAb
Immunogen:	Recombinant fusion protein containing a sequence corresponding to amino acids 19-328 of human IL1RL1 (NP_003847.2).
Sequence:	KFSKQSWGLE NEALIVRCPR QGKPSYTVDW YYSQTNKSIP TQERNRVFAS GQLLKFLPAA VADSGIYTCI VRSPTFNRTG YANVTIYKKQ SDCNVPDYLM YSTVSGSEKN SKIYCPTIDL YNWTAPLEWF KNCQALQGSR YRAHKSFLVI DNMVTEGADG YTCKFIHNEN GANYSVTATR SFTVKDEQGF SLFPVIGAPA QNEIKEVEIG KNANLTC SAC FGKGTQFLAA VLWQLNGTKI TDFGEPRIQQ EEGQNQSFNS GLACLDMLVR IADVKEEDLL LQYDCLALNL HGLRRHTVRL SRKNPSKECF
Isotype:	IgG
Cross-Reactivity:	Human, Mouse, Rat

Product Details

Characteristics: Polyclonal Antibodies

Purification: Affinity purification

Target Details

Target: IL1RL1

Alternative Name: IL1RL1 ([IL1RL1 Products](#))

Background: The protein encoded by this gene is a member of the interleukin 1 receptor family. Studies of the similar gene in mouse suggested that this receptor can be induced by proinflammatory stimuli, and may be involved in the function of helper T cells. This gene, interleukin 1 receptor, type I (IL1R1), interleukin 1 receptor, type II (IL1R2) and interleukin 1 receptor-like 2 (IL1RL2) form a cytokine receptor gene cluster in a region mapped to chromosome 2q12. Alternative splicing of this gene results in multiple transcript variants.,IL1RL1,DER4,FIT-1,IL33R,ST2,ST2L,ST2V,T1,Immunology & Inflammation,Cytokines,Interleukins,Toll-like Receptor Signaling Pathway,Cell Intrinsic Innate Immunity Signaling Pathway,TLR Signaling,Cardiovascular,Angiogenesis,Heart,Hypertrophy,IL1RL1

Molecular Weight: 23kDa/29kDa/36kDa/63kDa

Gene ID: 9173

UniProt: [Q01638](#)

Application Details

Application Notes: WB,1:500 - 1:2000

Restrictions: For Research Use only

Handling

Format: Liquid

Buffer: PBS with 0.02 % sodium azide,50 % glycerol, pH 7.3.

Preservative: Sodium azide

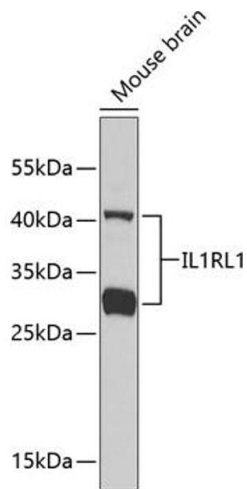
Precaution of Use: This product contains Sodium azide: a POISONOUS AND HAZARDOUS SUBSTANCE which should be handled by trained staff only.

Storage: -20 °C

Handling

Storage Comment: Store at -20°C. Avoid freeze / thaw cycles.

Images



Western Blotting

Image 1. Western blot analysis of extracts of mouse brain, using IL1RL1 antibody. Secondary antibody: HRP Goat Anti-Rabbit IgG (H+L) (ABIN1684268 and ABIN3020597) at 1:10000 dilution. Lysates/proteins: 25 µg per lane. Blocking buffer: 3 % nonfat dry milk in TBST.