



[Go to Product page](#)

Datasheet for ABIN7267986

anti-IL13 Receptor alpha 1 antibody

2 Images

Overview

Quantity:	100 µL
Target:	IL13 Receptor alpha 1 (IL13RA1)
Reactivity:	Human
Host:	Rabbit
Clonality:	Monoclonal
Conjugate:	This IL13 Receptor alpha 1 antibody is un-conjugated
Application:	Western Blotting (WB), Immunohistochemistry (IHC)

Product Details

Purpose:	IL13RA1 Rabbit mAb
Immunogen:	A synthesized peptide derived from human IL13RA1
Isotype:	IgG
Cross-Reactivity:	Human
Characteristics:	Monoclonal Antibodies
Purification:	Affinity purification

Target Details

Target:	IL13 Receptor alpha 1 (IL13RA1)
Alternative Name:	IL13RA1 (IL13RA1 Products)
Background:	The protein encoded by this gene is a subunit of the interleukin 13 receptor. This subunit forms

Target Details

a receptor complex with IL4 receptor alpha, a subunit shared by IL13 and IL4 receptors. This subunit serves as a primary IL13-binding subunit of the IL13 receptor, and may also be a component of IL4 receptors. This protein has been shown to bind tyrosine kinase TYK2, and thus may mediate the signaling processes that lead to the activation of JAK1, STAT3 and STAT6 induced by IL13 and IL4. [provided by RefSeq, Jul 2008],CD213A1, CT19, IL-13Ra, NR4,CDs,Cell Intrinsic Innate Immunity Signaling Pathway,Cytokines,Cytokines_Interleukins,Immunology & Inflammation,Kinase,Kinase_Tyrosine kinases,Signal Transduction,IL13RA1

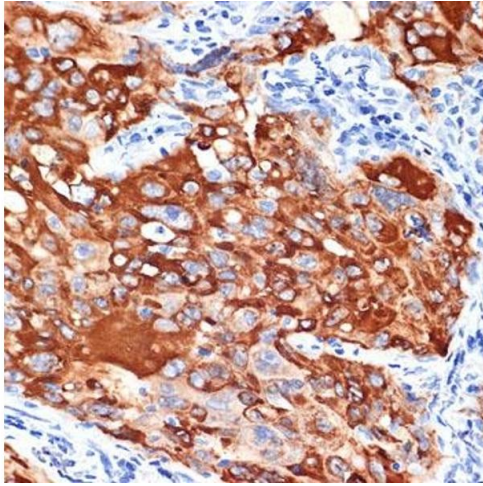
Molecular Weight:	49kDa
Gene ID:	3597
UniProt:	P78552
Pathways:	JAK-STAT Signaling , Positive Regulation of Immune Effector Process , Production of Molecular Mediator of Immune Response

Application Details

Application Notes:	WB,1:500 - 1:2000,IHC,1:50 - 1:200
Restrictions:	For Research Use only

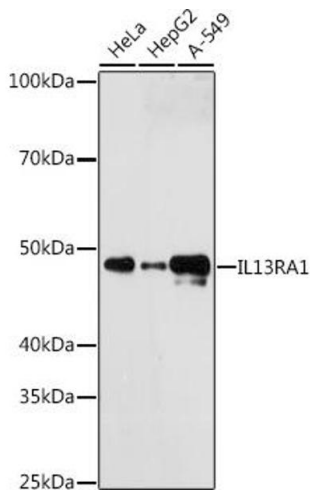
Handling

Format:	Liquid
Buffer:	PBS with 0.02 % sodium azide,0.05 % BSA,50 % glycerol, pH 7.3.
Preservative:	Sodium azide
Precaution of Use:	This product contains Sodium azide: a POISONOUS AND HAZARDOUS SUBSTANCE which should be handled by trained staff only.
Storage:	-20 °C
Storage Comment:	Store at -20°C. Avoid freeze / thaw cycles.



Immunohistochemistry

Image 1. Immunohistochemistry of paraffin-embedded human lung cancer using IL13R Rabbit mAb (ABIN7267986) at dilution of 1:100 (40x lens). Perform microwave antigen retrieval with 10 mM Tris/EDTA buffer pH 9.0 before commencing with IHC staining protocol.



Western Blotting

Image 2. Western blot analysis of extracts of various cell lines, using IL13R antibody (ABIN7267986) at 1:1000 dilution. Secondary antibody: HRP Goat Anti-Rabbit IgG (H+L) (ABIN1684268 and ABIN3020597) at 1:10000 dilution. Lysates/proteins: 25 µg per lane. Blocking buffer: 3 % nonfat dry milk in TBST. Detection: ECL Enhanced Kit (RM00021). Exposure time: 180s.