



[Go to Product page](#)

Datasheet for ABIN7267996
anti-IL-26 antibody (AA 22-100)

1 Image

Overview

Quantity:	100 µL
Target:	IL-26 (IL26)
Binding Specificity:	AA 22-100
Reactivity:	Human
Host:	Rabbit
Clonality:	Polyclonal
Conjugate:	This IL-26 antibody is un-conjugated
Application:	Western Blotting (WB)

Product Details

Purpose:	IL26 Rabbit pAb
Immunogen:	Recombinant fusion protein containing a sequence corresponding to amino acids 22-100 of human IL26 (NP_060872.1).
Sequence:	KHKQSSFTKS CYPRGTLTQA VDALYIKAAW LKATIPEDRI KNIRLLKKKT KKQFMKNCQF QEQLLSFFME DVFGQLQLQ
Isotype:	IgG
Cross-Reactivity:	Mouse
Characteristics:	Polyclonal Antibodies
Purification:	Affinity purification

Target Details

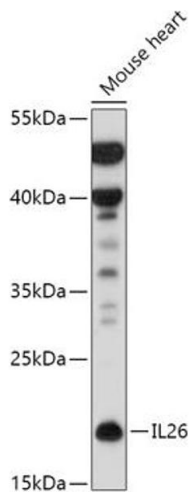
Target:	IL-26 (IL26)
Alternative Name:	IL26 (IL26 Products)
Background:	This gene was identified by its overexpression specifically in herpesvirus samimiri-transformed T cells. The encoded protein is a member of the IL10 family of cytokines. It is a secreted protein and may function as a homodimer. This protein is thought to contribute to the transformed phenotype of T cells after infection by herpesvirus samimiri. [provided by RefSeq, Jul 2008],AK155,IL-26,IL26,Immunology & Inflammation,Cytokines,Interleukins,Cell Intrinsic Innate Immunity Signaling Pathway,IL26
Gene ID:	55801
UniProt:	Q9NPH9

Application Details

Application Notes:	WB,1:500 - 1:2000
Restrictions:	For Research Use only

Handling

Format:	Liquid
Buffer:	PBS with 0.02 % sodium azide,50 % glycerol, pH 7.3.
Preservative:	Sodium azide
Precaution of Use:	This product contains Sodium azide: a POISONOUS AND HAZARDOUS SUBSTANCE which should be handled by trained staff only.
Storage:	-20 °C
Storage Comment:	Store at -20°C. Avoid freeze / thaw cycles.



Western Blotting

Image 1. Western blot analysis of extracts of Mouse heart, using IL26 antibody (ABIN7267996) at 1:500 dilution. Secondary antibody: HRP Goat Anti-Rabbit IgG (H+L) (ABIN1684268 and ABIN3020597) at 1:10000 dilution. Lysates/proteins: 25 µg per lane. Blocking buffer: 3 % nonfat dry milk in TBST. Detection: ECL Basic Kit (RM00020). Exposure time: 5 min.