



Datasheet for ABIN7267997 anti-IL-31 antibody (AA 24-164)



[Go to Product page](#)

1 Image

Overview

Quantity:	100 µL
Target:	IL-31 (IL31)
Binding Specificity:	AA 24-164
Reactivity:	Human
Host:	Rabbit
Clonality:	Polyclonal
Conjugate:	This IL-31 antibody is un-conjugated
Application:	Western Blotting (WB)

Product Details

Purpose:	IL31 Rabbit pAb
Immunogen:	Recombinant fusion protein containing a sequence corresponding to amino acids 24-164 of human IL31 (NP_001014358.1).
Sequence:	SHTLPVRLLR PSDDVQKIVE ELQSLSKMLL KDVEEEKGVL VSQNYTLPLCL SPDAQPPNNI HSPAIRAYLK TIRQLDNKSV IDEIIEHLDK LIFQDAPETN ISVPTDTHEC KRFILTISQQ FSECMDLALK SLTSGAQQAT T
Isotype:	IgG
Cross-Reactivity:	Human, Mouse, Rat
Characteristics:	Polyclonal Antibodies
Purification:	Affinity purification

Target Details

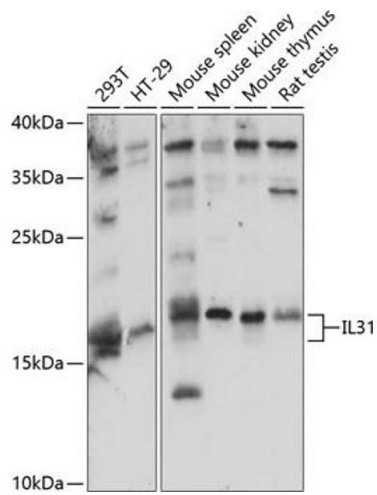
Target:	IL-31 (IL31)
Alternative Name:	IL31 (IL31 Products)
Background:	IL31, which is made principally by activated Th2-type T cells, interacts with a heterodimeric receptor consisting of IL31RA (MIM 609510) and OSMR (MIM 601743) that is constitutively expressed on epithelial cells and keratinocytes. IL31 may be involved in the promotion of allergic skin disorders and in regulating other allergic diseases, such as asthma (Dillon et al., 2004 [PubMed 15184896]).,IL31,IL-31,Immunology & Inflammation,Cytokines,Interleukins,Cell Intrinsic Innate Immunity Signaling Pathway,IL31
Molecular Weight:	18kDa
Gene ID:	386653
UniProt:	Q6EBC2

Application Details

Application Notes:	WB,1:500 - 1:2000
Restrictions:	For Research Use only

Handling

Format:	Liquid
Buffer:	PBS with 0.02 % sodium azide,50 % glycerol, pH 7.3.
Preservative:	Sodium azide
Precaution of Use:	This product contains Sodium azide: a POISONOUS AND HAZARDOUS SUBSTANCE which should be handled by trained staff only.
Storage:	-20 °C
Storage Comment:	Store at -20°C. Avoid freeze / thaw cycles.



Western Blotting

Image 1. Western blot analysis of extracts of various cell lines, using IL31 antibody (ABIN7267997) at 1:1000 dilution. Secondary antibody: HRP Goat Anti-Rabbit IgG (H+L) (ABIN1684268 and ABIN3020597) at 1:10000 dilution. Lysates/proteins: 25 µg per lane. Blocking buffer: 3% nonfat dry milk in TBST. Detection: ECL Basic Kit (RM00020). Exposure time: 90s.