



[Go to Product page](#)

Datasheet for ABIN7268019
anti-IQGAP1 antibody

2 Images

Overview

Quantity:	100 µL
Target:	IQGAP1
Reactivity:	Human
Host:	Rabbit
Clonality:	Monoclonal
Conjugate:	This IQGAP1 antibody is un-conjugated
Application:	Western Blotting (WB), Immunohistochemistry (IHC)

Product Details

Purpose:	IQGAP1 Rabbit mAb
Immunogen:	A synthesized peptide derived from human IQGAP1
Isotype:	IgG
Cross-Reactivity:	Human, Mouse
Characteristics:	Monoclonal Antibodies
Purification:	Affinity purification

Target Details

Target:	IQGAP1
Alternative Name:	IQGAP1 (IQGAP1 Products)
Background:	This gene encodes a member of the IQGAP family. The protein contains four IQ domains, one

Target Details

calponin homology domain, one Ras-GAP domain and one WW domain. It interacts with components of the cytoskeleton, with cell adhesion molecules, and with several signaling molecules to regulate cell morphology and motility. Expression of the protein is upregulated by gene amplification in two gastric cancer cell lines. [provided by RefSeq, Jul 2008],HUMORFA01, SAR1, p195,Cancer,Cell Adhesion,Cell Biology & Developmental Biology,Endocrine & Metabolism,G protein signaling,G protein signaling_Small G proteins,Signal Transduction,IQGAP1

Molecular Weight: 195kDa

Gene ID: 8826

UniProt: [P46940](#)

Pathways: [Signaling Events mediated by VEGFR1 and VEGFR2](#)

Application Details

Application Notes: WB,1:500 - 1:2000,IHC,1:50 - 1:200

Restrictions: For Research Use only

Handling

Format: Liquid

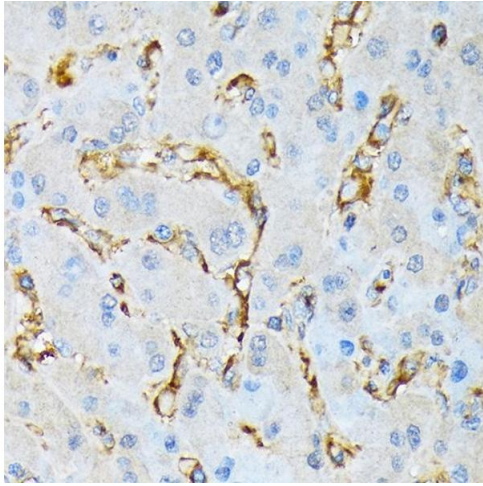
Buffer: PBS with 0.02 % sodium azide,0.05 % BSA,50 % glycerol, pH 7.3.

Preservative: Sodium azide

Precaution of Use: This product contains Sodium azide: a POISONOUS AND HAZARDOUS SUBSTANCE which should be handled by trained staff only.

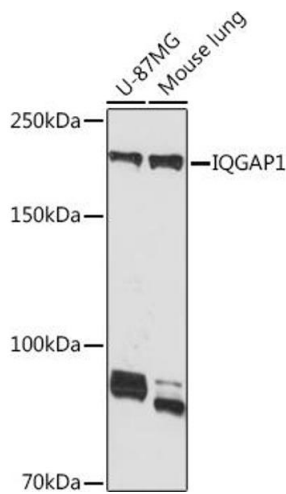
Storage: -20 °C

Storage Comment: Store at -20°C. Avoid freeze / thaw cycles.



Immunohistochemistry

Image 1. Immunohistochemistry of paraffin-embedded human liver using IQG Rabbit mAb (ABIN7268019) at dilution of 1:100 (40x lens). Perform microwave antigen retrieval with 10 mM Tris/EDTA buffer pH 9.0 before commencing with IHC staining protocol.



Western Blotting

Image 2. Western blot analysis of extracts of various cell lines, using IQG Rabbit mAb (ABIN7268019) at 1:1000 dilution. Secondary antibody: HRP Goat Anti-Rabbit IgG (H+L) (ABIN1684268 and ABIN3020597) at 1:10000 dilution. Lysates/proteins: 25 µg per lane. Blocking buffer: 3 % nonfat dry milk in TBST. Detection: ECL Basic Kit (RM00020). Exposure time: 30s.