



[Go to Product page](#)

Datasheet for ABIN7268023

## anti-ISG15 antibody

### 4 Images

#### Overview

Quantity:	100 µL
Target:	ISG15
Reactivity:	Human
Host:	Rabbit
Clonality:	Monoclonal
Conjugate:	This ISG15 antibody is un-conjugated
Application:	Western Blotting (WB), Immunofluorescence (IF)

#### Product Details

Purpose:	ISG15 Rabbit mAb
Immunogen:	A synthesized peptide derived from human ISG15
Isotype:	IgG
Cross-Reactivity:	Human, Mouse, Rat
Characteristics:	Monoclonal Antibodies
Purification:	Affinity purification

#### Target Details

Target:	ISG15
Alternative Name:	ISG15 ( <a href="#">ISG15 Products</a> )
Background:	The protein encoded by this gene is a ubiquitin-like protein that is conjugated to intracellular

## Target Details

---

target proteins upon activation by interferon-alpha and interferon-beta. Several functions have been ascribed to the encoded protein, including chemotactic activity towards neutrophils, direction of ligated target proteins to intermediate filaments, cell-to-cell signaling, and antiviral activity during viral infections. While conjugates of this protein have been found to be noncovalently attached to intermediate filaments, this protein is sometimes secreted. [provided by RefSeq, Dec 2012],G1P2, IFI15, IMD38, IP17, UCRP, hUCRP,Cell Biology & Developmental Biology,Epigenetics & Nuclear Signaling,Ubiquitin,ISG15

---

Molecular Weight: 17kDa

---

Gene ID: 9636

---

UniProt: [P05161](#)

## Application Details

---

---

Application Notes: WB,1:500 - 1:2000, IF,1:50 - 1:200

---

Restrictions: For Research Use only

## Handling

---

---

Format: Liquid

---

Buffer: PBS with 0.02 % sodium azide,0.05 % BSA,50 % glycerol, pH 7.3.

---

Preservative: Sodium azide

---

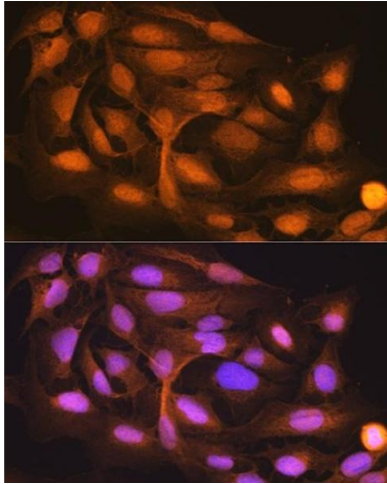
Precaution of Use: This product contains Sodium azide: a POISONOUS AND HAZARDOUS SUBSTANCE which should be handled by trained staff only.

---

Storage: -20 °C

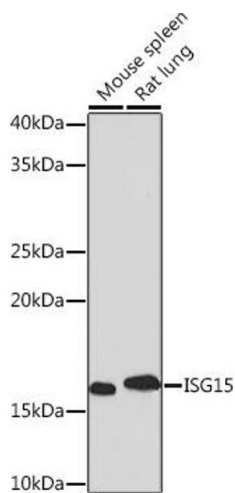
---

Storage Comment: Store at -20°C. Avoid freeze / thaw cycles.



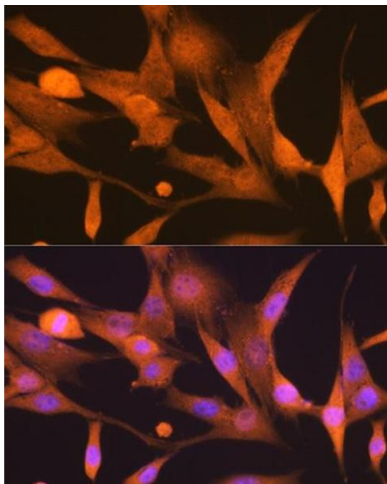
### Immunofluorescence

**Image 1.** Immunofluorescence analysis of U-2 OS cells using ISG15 Rabbit mAb (ABIN7268023) at dilution of 1:100 (40x lens). Blue: DAPI for nuclear staining.



### Western Blotting

**Image 2.** Western blot analysis of extracts of various cell lines, using ISG15 Rabbit mAb (ABIN7268023) at 1:1000 dilution. Secondary antibody: HRP Goat Anti-Rabbit IgG (H+L) (ABIN1684268 and ABIN3020597) at 1:10000 dilution. Lysates/proteins: 25 µg per lane. Blocking buffer: 3 % nonfat dry milk in TBST. Detection: ECL Basic Kit (RM00020). Exposure time: 3 min.



### Immunofluorescence

**Image 3.** Immunofluorescence analysis of NIH-3T3 cells using ISG15 Rabbit mAb (ABIN7268023) at dilution of 1:100 (40x lens). Blue: DAPI for nuclear staining.

Please check the [product details page](#) for more images. Overall 4 images are available for ABIN7268023.