

Datasheet for ABIN7268057
anti-C-JUN antibody (pThr91)



[Go to Product page](#)

3 Images

Overview

Quantity:	100 µL
Target:	C-JUN (JUN)
Binding Specificity:	pThr91
Reactivity:	Human
Host:	Rabbit
Clonality:	Monoclonal
Conjugate:	This C-JUN antibody is un-conjugated
Application:	Western Blotting (WB), Immunohistochemistry (IHC)

Product Details

Purpose:	Phospho-c-Jun-T91 Rabbit mAb
Immunogen:	A phospho specific peptide corresponding to residues surrounding T91 of human c-Jun
Isotype:	IgG
Cross-Reactivity:	Human, Mouse, Rat
Characteristics:	Phosphorylated Antibodies
Purification:	Affinity purification

Target Details

Target:	C-JUN (JUN)
Alternative Name:	JUN (JUN Products)

Target Details

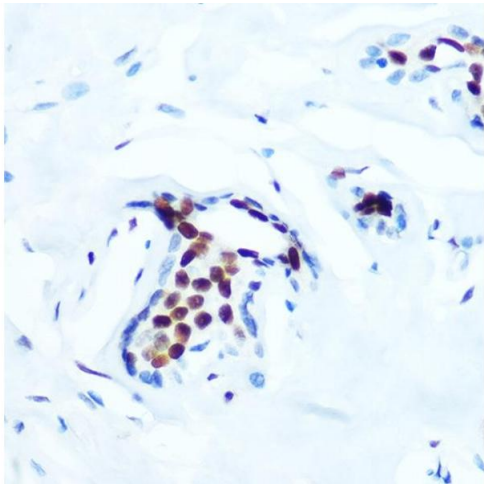
Background:	<p>This gene is the putative transforming gene of avian sarcoma virus 17. It encodes a protein which is highly similar to the viral protein, and which interacts directly with specific target DNA sequences to regulate gene expression. This gene is intronless and is mapped to 1p32-p31, a chromosomal region involved in both translocations and deletions in human malignancies.</p> <p>[provided by RefSeq, Jul 2008],AP-1, AP1, c-Jun,Apoptosis,B Cell Receptor Signaling Pathway,Cancer,Cell Biology & Developmental Biology,Cell Intrinsic Innate Immunity Signaling Pathway,Epigenetics & Nuclear Signaling,ErbB-HER Signaling Pathway,Immunology & Inflammation,Innate Immunity_TLR Signaling,MAPK-JNK Signaling Pathway,Protein phosphorylation,Signal Transduction,T Cell Receptor Signaling Pathway,Toll-like Receptor Signaling Pathway,Transcription Factors,JUN</p>
Molecular Weight:	43kDa
Gene ID:	3725
UniProt:	P05412
Pathways:	MAPK Signaling , RTK Signaling , WNT Signaling , Fc-epsilon Receptor Signaling Pathway , Activation of Innate immune Response , Myometrial Relaxation and Contraction , Skeletal Muscle Fiber Development , Protein targeting to Nucleus , Toll-Like Receptors Cascades , Autophagy , Signaling of Hepatocyte Growth Factor Receptor , BCR Signaling , S100 Proteins

Application Details

Application Notes:	WB,1:500 - 1:2000,IHC,1:50 - 1:200
Restrictions:	For Research Use only

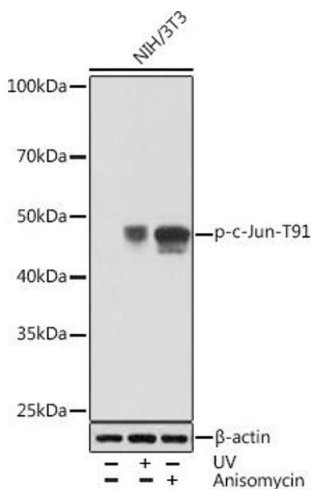
Handling

Format:	Liquid
Buffer:	PBS with 0.02 % sodium azide,0.05 % BSA,50 % glycerol, pH 7.3.
Preservative:	Sodium azide
Precaution of Use:	This product contains Sodium azide: a POISONOUS AND HAZARDOUS SUBSTANCE which should be handled by trained staff only.
Storage:	-20 °C
Storage Comment:	Store at -20°C. Avoid freeze / thaw cycles.



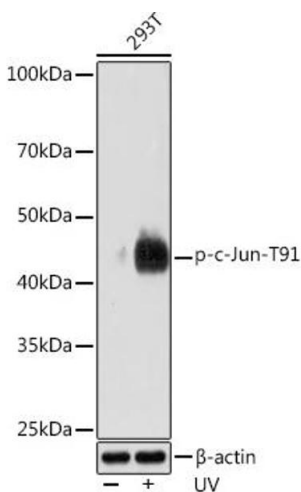
Immunohistochemistry

Image 1. Immunohistochemistry of paraffin-embedded human breast using Phospho-c-Jun-T91 Rabbit mAb (ABIN7268057) at dilution of 1:100 (40x lens). Perform microwave antigen retrieval with 10 mM Tris/EDTA buffer pH 9.0 before commencing with IHC staining protocol.



Western Blotting

Image 2. Western blot analysis of extracts of NIH/3T3 cells, using Phospho-c-Jun-T91 Rabbit mAb (ABIN7268057) at 1:1000 dilution. NIH/3T3 cells were treated by UV at room temperature for 15-30 minutes or treated by Anisomycin (25 µg/mL) at 37 °C for 30 minutes. Secondary antibody: HRP Goat Anti-Rabbit IgG (H+L) (ABIN1684268 and ABIN3020597) at 1:10000 dilution. Lysates/proteins: 25 µg per lane. Blocking buffer: 3 % BSA. Detection: ECL Basic Kit (RM00020). Exposure time: 30s.



Western Blotting

Image 3. Western blot analysis of extracts of 293T cells, using Phospho-c-Jun-T91 Rabbit mAb (ABIN7268057) at 1:1000 dilution. 293T cells were treated by UV at room temperature for 15-30 minutes. Secondary antibody: HRP Goat Anti-Rabbit IgG (H+L) (ABIN1684268 and ABIN3020597) at 1:10000 dilution. Lysates/proteins: 25 µg per lane. Blocking buffer: 3 % BSA. Detection: ECL Enhanced Kit (RM00021). Exposure time: 3 min.