



[Go to Product page](#)

Datasheet for ABIN7268058  
**anti-C-JUN antibody (pThr91)**

5 Images

### Overview

Quantity:	100 µL
Target:	C-JUN (JUN)
Binding Specificity:	pThr91
Reactivity:	Human
Host:	Rabbit
Clonality:	Polyclonal
Conjugate:	This C-JUN antibody is un-conjugated
Application:	Western Blotting (WB), Immunohistochemistry (IHC), Immunofluorescence (IF)

### Product Details

Purpose:	Phospho-c-Jun-T91 Rabbit pAb
Immunogen:	A synthetic phosphorylated peptide around T91 of human JUN.
Isotype:	IgG
Cross-Reactivity:	Human, Mouse, Rat
Characteristics:	Phosphorylated Antibodies
Purification:	Affinity purification

### Target Details

Target:	C-JUN (JUN)
Alternative Name:	JUN ( <a href="#">JUN Products</a> )

## Target Details

---

**Background:** This gene is the putative transforming gene of avian sarcoma virus 17. It encodes a protein which is highly similar to the viral protein, and which interacts directly with specific target DNA sequences to regulate gene expression. This gene is intronless and is mapped to 1p32-p31, a chromosomal region involved in both translocations and deletions in human malignancies.,AP-1,AP1,c-Jun,JUN,c,Epigenetics & Nuclear Signaling,Transcription Factors,Cancer,Signal Transduction,ErbB-HER Signaling Pathway,MAPK-JNK Signaling Pathway,Cell Biology & Developmental Biology,Apoptosis,Immunology & Inflammation,B Cell Receptor Signaling Pathway,T Cell Receptor Signaling Pathway,Toll-like Receptor Signaling Pathway,Cell Intrinsic Innate Immunity Signaling Pathway,TLR Signaling,Protein phosphorylation,JUN

**Gene ID:** 3725

**UniProt:** [P05412](#)

**Pathways:** [MAPK Signaling](#), [RTK Signaling](#), [WNT Signaling](#), [Fc-epsilon Receptor Signaling Pathway](#), [Activation of Innate immune Response](#), [Myometrial Relaxation and Contraction](#), [Skeletal Muscle Fiber Development](#), [Protein targeting to Nucleus](#), [Toll-Like Receptors Cascades](#), [Autophagy](#), [Signaling of Hepatocyte Growth Factor Receptor](#), [BCR Signaling](#), [S100 Proteins](#)

## Application Details

---

**Application Notes:** WB,1:500 - 1:2000,IHC,1:50 - 1:200,IF,1:50 - 1:200

**Restrictions:** For Research Use only

## Handling

---

**Format:** Liquid

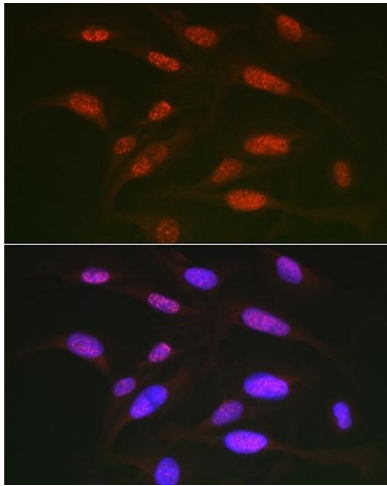
**Buffer:** PBS with 0.02 % sodium azide,50 % glycerol, pH 7.3.

**Preservative:** Sodium azide

**Precaution of Use:** This product contains Sodium azide: a POISONOUS AND HAZARDOUS SUBSTANCE which should be handled by trained staff only.

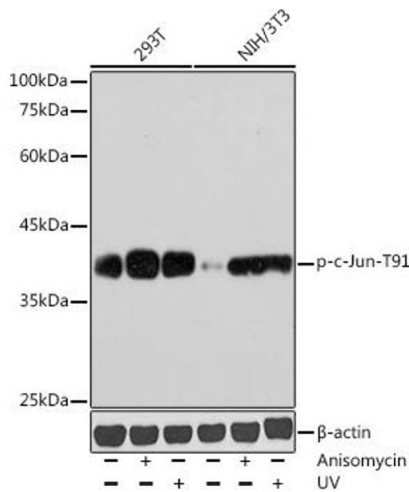
**Storage:** -20 °C

**Storage Comment:** Store at -20°C. Avoid freeze / thaw cycles.



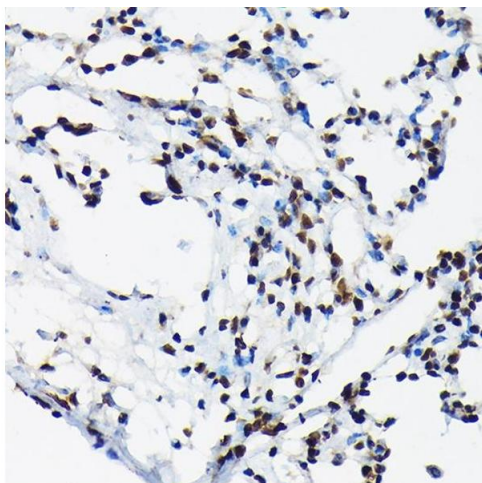
### Immunofluorescence

**Image 1.** Immunofluorescence analysis of U2OS cells using Phospho-c-Jun-T91 Rabbit pAb (ABIN7268058) at dilution of 1:50 (40x lens). Blue: DAPI for nuclear staining.



### Western Blotting

**Image 2.** Western blot analysis of extracts of various cell lines, using Phospho-c-Jun-T91 antibody (ABIN7268058) at 1:1000 dilution. Both 293T cells and NIH/3T3 cells were treated by Anisomycin (25 µg/mL) at 37 °C for 30 minutes after serum-starvation overnight. Both 293T cells and NIH/3T3 cells were treated by UV at room temperature for 15-30 minutes. Secondary antibody: HRP Goat Anti-Rabbit IgG (H+L) (ABIN1684268 and ABIN3020597) at 1:10000 dilution. Lysates/proteins: 25 µg per lane. Blocking buffer: 3 % nonfat dry milk in TBST. Detection: ECL Basic Kit (RM00020). Exposure time: 180s.



### Immunohistochemistry

**Image 3.** Immunohistochemistry of paraffin-embedded rat lung using Phospho-c-Jun-T91 Rabbit pAb (ABIN7268058) at dilution of 1:50 (40x lens). Perform high pressure antigen retrieval with 10 mM citrate buffer pH 6.0 before commencing with IHC staining protocol.

Please check the [product details page](#) for more images. Overall 5 images are available for ABIN7268058.