

Datasheet for ABIN7268062  
**anti-KAT6B antibody (AA 400-500)**[Go to Product page](#)

## 1 Image

## Overview

Quantity:	100 µL
Target:	KAT6B
Binding Specificity:	AA 400-500
Reactivity:	Human
Host:	Rabbit
Clonality:	Polyclonal
Conjugate:	This KAT6B antibody is un-conjugated
Application:	Western Blotting (WB)

## Product Details

Purpose:	KAT6B Rabbit pAb
Immunogen:	A synthetic peptide corresponding to a sequence within amino acids 400-500 of human KAT6B (NP_001243398.1).
Sequence:	DLDVFKQAQE LSWEKIECES GVEDCGRYPS VIEFGKYEQ TWYSSYPQE YARLPKLYLC EFCLKYMKSK NILLRHSKCC GWFHPPANEI YRRKDLSVFE V
Isotype:	IgG
Cross-Reactivity:	Human, Mouse, Rat
Characteristics:	Polyclonal Antibodies
Purification:	Affinity purification

## Target Details

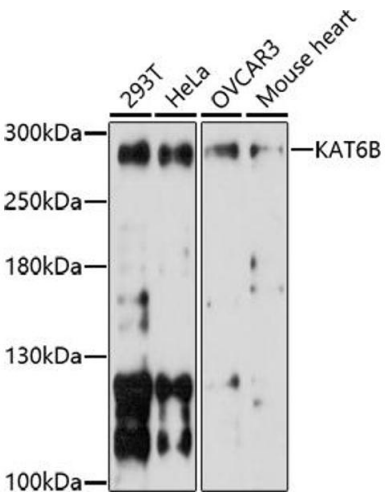
Target:	KAT6B
Alternative Name:	KAT6B ( <a href="#">KAT6B Products</a> )
Background:	The protein encoded by this gene is a histone acetyltransferase and component of the MOZ/MORF protein complex. In addition to its acetyltransferase activity, the encoded protein has transcriptional activation activity in its N-terminal end and transcriptional repression activity in its C-terminal end. This protein is necessary for RUNX2-dependent transcriptional activation and could be involved in brain development. Mutations have been found in patients with genitopatellar syndrome. A translocation of this gene and the CREBBP gene results in acute myeloid leukemias. Three transcript variants encoding different isoforms have been found for this gene.,KAT6B,GTPTS,MORF,MOZ2,MYST4,ZC2HC6B,qkf,querkopf,Epigenetics & Nuclear Signaling,Chromatin Modifying Enzymes,Acetylation,KAT6B
Gene ID:	23522
UniProt:	<a href="#">Q8WYB5</a>

## Application Details

Application Notes:	WB,1:500 - 1:2000
Restrictions:	For Research Use only

## Handling

Format:	Liquid
Buffer:	PBS with 0.02 % sodium azide,50 % glycerol, pH 7.3.
Preservative:	Sodium azide
Precaution of Use:	This product contains Sodium azide: a POISONOUS AND HAZARDOUS SUBSTANCE which should be handled by trained staff only.
Storage:	-20 °C
Storage Comment:	Store at -20°C. Avoid freeze / thaw cycles.



Western Blotting

**Image 1.** Western blot analysis of extracts of various cell lines, using KB antibody (ABIN7268062) at 1:1000 dilution. Secondary antibody: HRP Goat Anti-Rabbit IgG (H+L) (ABIN1684268 and ABIN3020597) at 1:10000 dilution. Lysates/proteins: 25 µg per lane. Blocking buffer: 3 % nonfat dry milk in TBST. Detection: ECL Basic Kit (RM00020). Exposure time: 90s.