

Datasheet for ABIN7268064
anti-Kallikrein 5 antibody (C-Term)[Go to Product page](#)

1 Image

Overview

Quantity:	100 µL
Target:	Kallikrein 5 (KLK5)
Binding Specificity:	C-Term
Reactivity:	Human
Host:	Rabbit
Clonality:	Polyclonal
Conjugate:	This Kallikrein 5 antibody is un-conjugated
Application:	Western Blotting (WB)

Product Details

Purpose:	KLK5 Rabbit pAb
Immunogen:	A synthetic peptide corresponding to a sequence within amino acids 200 to the C-terminus of human KLK5 (NP_001070959.1).
Sequence:	FPKVLQCLNI SVLSQKRCED AYPRQIDDTM FCAGDKAGRD SCQGDSGGPV VCNGSLQGLV SWG DYPCARP NRPGVYTNLC KFTKWIQETI QANS
Isotype:	IgG
Cross-Reactivity:	Human
Characteristics:	Polyclonal Antibodies
Purification:	Affinity purification

Target Details

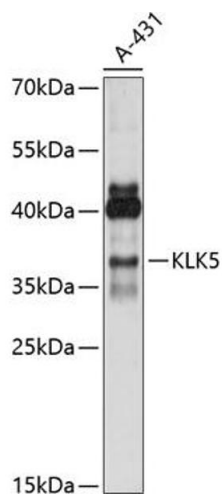
Target:	Kallikrein 5 (KLK5)
Alternative Name:	KLK5 (KLK5 Products)
Background:	Kallikreins are a subgroup of serine proteases having diverse physiological functions. Growing evidence suggests that many kallikreins are implicated in carcinogenesis and some have potential as novel cancer and other disease biomarkers. This gene is one of the fifteen kallikrein subfamily members located in a cluster on chromosome 19. Its expression is up-regulated by estrogens and progestins. The encoded protein is secreted and may be involved in desquamation in the epidermis. Alternative splicing results in multiple transcript variants encoding the same protein.,KLK5,KLK-L2,KLKL2,SCTE,Cancer,Invasion and Metastasis,Signal Transduction,Cell Biology & Developmental Biology,Cytoskeleton,Extracellular Matrix,Ubiquitin,KLK5
Molecular Weight:	32kDa
Gene ID:	25818
UniProt:	Q9Y337
Pathways:	Complement System , Regulation of G-Protein Coupled Receptor Protein Signaling

Application Details

Application Notes:	WB,1:500 - 1:2000
Restrictions:	For Research Use only

Handling

Format:	Liquid
Buffer:	PBS with 0.02 % sodium azide,50 % glycerol, pH 7.3.
Preservative:	Sodium azide
Precaution of Use:	This product contains Sodium azide: a POISONOUS AND HAZARDOUS SUBSTANCE which should be handled by trained staff only.
Storage:	-20 °C
Storage Comment:	Store at -20°C. Avoid freeze / thaw cycles.



Western Blotting

Image 1. Western blot analysis of extracts of A-431 cells, using KLK5 antibody (ABIN7268064) at 1:1000 dilution. Secondary antibody: HRP Goat Anti-Rabbit IgG (H+L) (ABIN1684268 and ABIN3020597) at 1:10000 dilution. Lysates/proteins: 25 µg per lane. Blocking buffer: 3 % nonfat dry milk in TBST. Detection: ECL Enhanced Kit (RM00021). Exposure time: 30s.