



[Go to Product page](#)

Datasheet for ABIN7268068
anti-KAL1 antibody (AA 200-300)

5 Images

Overview

Quantity:	100 µL
Target:	KAL1
Binding Specificity:	AA 200-300
Reactivity:	Human
Host:	Rabbit
Clonality:	Polyclonal
Conjugate:	This KAL1 antibody is un-conjugated
Application:	Western Blotting (WB), Immunofluorescence (IF)

Product Details

Purpose:	KAL1 Rabbit pAb
Immunogen:	A synthetic peptide corresponding to a sequence within amino acids 200-300 of human KAL1 (NP_000207.2).
Sequence:	LEVKWSSKFN ISIEPVIYV VQRRWNYGIHP SEDDATHWQT VAQTTDERVQ LTDIRPSRWY QFRVAAVNVH GTRGFTAPSK HFRSSKDPSA PPAPANLRLA N
Isotype:	IgG
Cross-Reactivity:	Human, Mouse, Rat
Characteristics:	Polyclonal Antibodies
Purification:	Affinity purification

Target Details

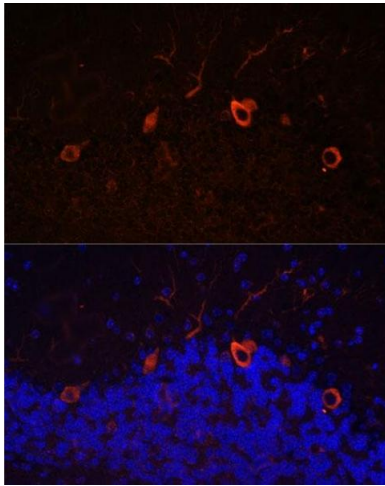
Target:	KAL1
Alternative Name:	KAL1 (KAL1 Products)
Background:	Mutations in this gene cause the X-linked Kallmann syndrome. The encoded protein is similar in sequence to proteins known to function in neural cell adhesion and axonal migration. In addition, this cell surface protein is N-glycosylated and may have anti-protease activity.,ANOS1,ADMLX,HH1,HHA,KAL,KAL1,KALIG-1,KMS,WFDC19,anosmin-1,Cell Biology & Developmental Biology,Cell Adhesion,Endocrine & Metabolism,Neuroscience,KAL1
Molecular Weight:	76kDa
Gene ID:	3730
UniProt:	P23352

Application Details

Application Notes:	WB,1:500 - 1:2000,IF,1:50 - 1:200
Restrictions:	For Research Use only

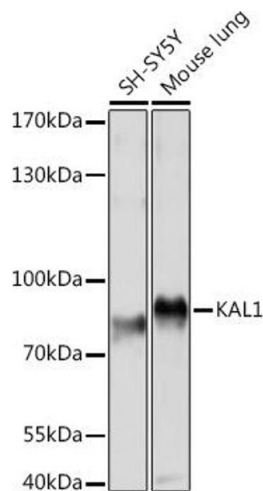
Handling

Format:	Liquid
Buffer:	PBS with 0.02 % sodium azide,50 % glycerol, pH 7.3.
Preservative:	Sodium azide
Precaution of Use:	This product contains Sodium azide: a POISONOUS AND HAZARDOUS SUBSTANCE which should be handled by trained staff only.
Storage:	-20 °C
Storage Comment:	Store at -20°C. Avoid freeze / thaw cycles.



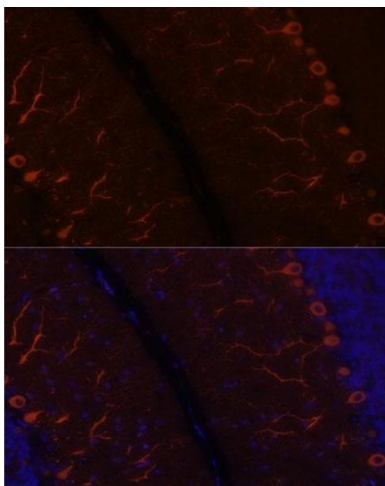
Immunofluorescence

Image 1. Immunofluorescence analysis of mouse brain using K antibody (ABIN7268068) at dilution of 1:100. Blue: DAPI for nuclear staining.



Western Blotting

Image 2. Western blot analysis of extracts of various cell lines, using K Rabbit pAb (ABIN7268068) at 1:1000 dilution. Secondary antibody: HRP Goat Anti-Rabbit IgG (H+L) (ABIN1684268 and ABIN3020597) at 1:10000 dilution. Lysates/proteins: 25 µg per lane. Blocking buffer: 3 % nonfat dry milk in TBST. Detection: ECL Basic Kit (RM00020). Exposure time: 5s.



Immunofluorescence

Image 3. Immunofluorescence analysis of rat brain using K antibody (ABIN7268068) at dilution of 1:100. Blue: DAPI for nuclear staining.

Please check the [product details page](#) for more images. Overall 5 images are available for ABIN7268068.