



[Go to Product page](#)

Datasheet for ABIN7268070
anti-KPNA3 antibody (AA 1-210)

1 Image

Overview

Quantity:	100 µL
Target:	KPNA3
Binding Specificity:	AA 1-210
Reactivity:	Human
Host:	Rabbit
Clonality:	Polyclonal
Conjugate:	This KPNA3 antibody is un-conjugated
Application:	Western Blotting (WB)

Product Details

Purpose:	KPNA3 Rabbit pAb
Immunogen:	Recombinant fusion protein containing a sequence corresponding to amino acids 1-210 of human KPNA3 (NP_002258.2).
Sequence:	MAENPSLENH RIKSFKNKGR DVETMRRHRN EVTVELRKNK RDEHLLKKRN VPQEESELEDS DVDADFKAQN VTLEAILQNA TSDNPVVQLS AVQAARKLLS SDRNPPIDDL IKSGILPILV KCLERDDNPS LQFEAAWALT NIASGSAQT QAVVQSNVAVP LFLRLLRSPH QNVCEQAVWA LGNIIGDGPQ CRDYVISLGV VKPLLSFISP
Isotype:	IgG
Cross-Reactivity:	Human, Mouse, Rat
Characteristics:	Polyclonal Antibodies

Product Details

Purification: Affinity purification

Target Details

Target: KPNA3

Alternative Name: KPNA3 ([KPNA3 Products](#))

Background: The transport of molecules between the nucleus and the cytoplasm in eukaryotic cells is mediated by the nuclear pore complex (NPC), which consists of 60-100 proteins. Small molecules (up to 70 kD) can pass through the nuclear pore by nonselective diffusion while larger molecules are transported by an active process. The protein encoded by this gene belongs to the importin alpha family, and is involved in nuclear protein import.,KPNA3,IPOA4,SRP1,SRP1gamma,SRP4,hSRP1,Signal Transduction,KPNA3

Molecular Weight: 57kDa

Gene ID: 3839

UniProt: [O00505](#)

Pathways: [Protein targeting to Nucleus](#)

Application Details

Application Notes: WB,1:500 - 1:2000

Restrictions: For Research Use only

Handling

Format: Liquid

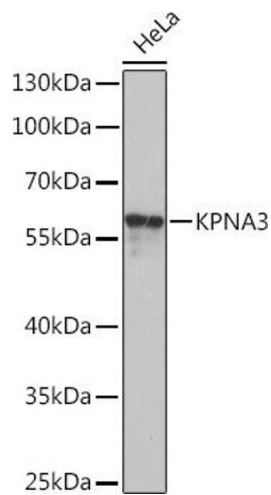
Buffer: PBS with 0.02 % sodium azide,50 % glycerol, pH 7.3.

Preservative: Sodium azide

Precaution of Use: This product contains Sodium azide: a POISONOUS AND HAZARDOUS SUBSTANCE which should be handled by trained staff only.

Storage: -20 °C

Storage Comment: Store at -20°C. Avoid freeze / thaw cycles.



Western Blotting

Image 1. Western blot analysis of extracts of HeLa cells, using KPN Rabbit pAb at 1:1000 dilution. Secondary antibody: HRP Goat Anti-Rabbit IgG (H+L) (ABIN1684268 and ABIN3020597) at 1:10000 dilution. Lysates/proteins: 25 µg per lane. Blocking buffer: 3% nonfat dry milk in TBST. Detection: ECL Basic Kit (RM00020). Exposure time: 5s.