



[Go to Product page](#)

Datasheet for ABIN7268073
anti-KLHDC2 antibody (AA 1-240)

1 Image

Overview

Quantity:	100 µL
Target:	KLHDC2
Binding Specificity:	AA 1-240
Reactivity:	Human
Host:	Rabbit
Clonality:	Polyclonal
Conjugate:	This KLHDC2 antibody is un-conjugated
Application:	Western Blotting (WB)

Product Details

Purpose:	KLHDC2 Rabbit pAb
Immunogen:	Recombinant fusion protein containing a sequence corresponding to amino acids 1-240 of human KLHDC2 (NP_055130.1).
Sequence:	MADGNEDLRA DDLPGPAFES YESMELACPA ERSGHVAVSD GRHMFVWGGY KSNQVRGLYD FYLPREELWI YNMETGRWKK INTEG DVPPS MSGSCAVCVD RVLVYLFGGHH SRGNTNKFYM LDSRSTDRVL QWERIDCQGI PPSSKDKLGV WVYKNKLIFF GGYGYLPEDK VLGTFEFD ET SFWNSSHPRG WNDHVHILDT ETFTWSQPIT TGKAPSPRAA HACATVGNRG FVFGGRYRDA
Isotype:	IgG
Cross-Reactivity:	Human
Characteristics:	Polyclonal Antibodies

Product Details

Purification: Affinity purification

Target Details

Target: KLHDC2

Alternative Name: KLHDC2 ([KLHDC2 Products](#))

Background: Substrate-recognition component of a Cul2-RING (CRL2 E3 ubiquitin-protein ligase complex of the DesCEND (destruction via C-end degrons pathway, which recognizes a C-degron located at the extreme C terminus of target proteins, leading to their ubiquitination and degradation. The C-degron recognized by the DesCEND pathway is usually a motif of less than ten residues and can be present in full-length proteins, truncated proteins or proteolytically cleaved forms. The CRL2(KLHDC2 complex specifically recognizes proteins with a diglycine (Gly-Gly at the C-terminus, leading to their ubiquitination and degradation. The CRL2(KLHDC2 complex mediates ubiquitination and degradation of truncated SELENOK and SELENOS selenoproteins produced by failed UGA/Sec decoding, which end with a diglycine. The CRL2(KLHDC2 complex also recognizes proteolytically cleaved proteins ending with Gly-Gly, such as the N-terminal fragment of USP1, leading to their degradation. May also act as an indirect repressor of CREB3-mediated transcription by interfering with CREB3-DNA-binding.,KLHDC2,HCLP-1,HCLP1,LCP,Epigenetics & Nuclear Signaling,KLHDC2

Molecular Weight: 28kDa/46kDa

Gene ID: 23588

UniProt: [Q9Y2U9](#)

Application Details

Application Notes: WB,1:500 - 1:2000

Restrictions: For Research Use only

Handling

Format: Liquid

Buffer: PBS with 0.02 % sodium azide,50 % glycerol, pH 7.3.

Preservative: Sodium azide

Precaution of Use: This product contains Sodium azide: a POISONOUS AND HAZARDOUS SUBSTANCE which

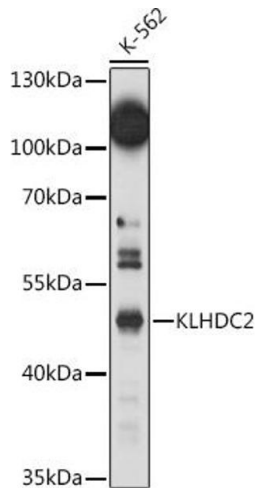
Handling

should be handled by trained staff only.

Storage: -20 °C

Storage Comment: Store at -20°C. Avoid freeze / thaw cycles.

Images



Western Blotting

Image 1. Western blot analysis of extracts of K-562 cells, using KLHDC2 antibody (ABIN7268073) at 1:1000 dilution. Secondary antibody: HRP Goat Anti-Rabbit IgG (H+L) (ABIN1684268 and ABIN3020597) at 1:10000 dilution. Lysates/proteins: 25 µg per lane. Blocking buffer: 3 % nonfat dry milk in TBST. Detection: ECL Basic Kit (RM00020). Exposure time: 150s.