



Datasheet for ABIN7268078
anti-KLHL11 antibody (AA 16-300)



[Go to Product page](#)

1 Image

Overview

Quantity:	100 µL
Target:	KLHL11
Binding Specificity:	AA 16-300
Reactivity:	Human
Host:	Rabbit
Clonality:	Polyclonal
Conjugate:	This KLHL11 antibody is un-conjugated
Application:	Western Blotting (WB)

Product Details

Purpose:	KLHL11 Rabbit pAb
Immunogen:	Recombinant fusion protein containing a sequence corresponding to amino acids 16-300 of human KLHL11 (NP_060613.1).
Sequence:	ASLQVLEMES METAAGSAG LAAEVRGSGT VDFGPGPGIS AMEASGGDPG PEAEDFECSS HCSELSWRQN EQRRQGLFCD ITLCFGGAGG REFRAHRSVL AAATEYFTPL LSGQFSESRS GRVEMRKWSS EPGPEPDTVE AVIEYMYTGR IRVSTGSVHE VLELADRFL IRLKEFCGEF LKKKLHLSNC VAIHSLAHMY TLSQLALKAA DMIRRNFKV IQDEEFYTL FHLIRDWLSD LEITVDSEEV LFETVLKVVQ RNAEERERYF EELFKLLRLS QMKPT
Isotype:	IgG
Cross-Reactivity:	Mouse, Rat
Characteristics:	Polyclonal Antibodies

Product Details

Purification: Affinity purification

Target Details

Target: KLHL11

Alternative Name: KLHL11 ([KLHL11 Products](#))

Background: Component of a cullin-RING-based BCR (BTB-CUL3-RBX1 E3 ubiquitin-protein ligase complex that mediates the ubiquitination of target proteins, leading most often to their proteasomal degradation.,KLHL11,KLHL11

Gene ID: 55175

UniProt: [Q9NVR0](#)

Application Details

Application Notes: WB,1:500 - 1:2000

Restrictions: For Research Use only

Handling

Format: Liquid

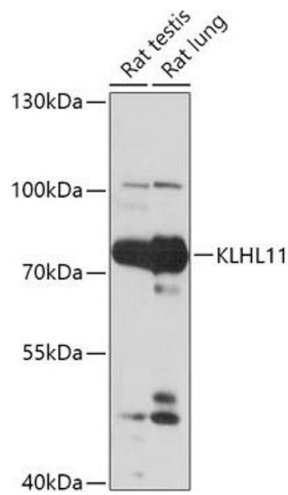
Buffer: PBS with 0.02 % sodium azide,50 % glycerol, pH 7.3.

Preservative: Sodium azide

Precaution of Use: This product contains Sodium azide: a POISONOUS AND HAZARDOUS SUBSTANCE which should be handled by trained staff only.

Storage: -20 °C

Storage Comment: Store at -20°C. Avoid freeze / thaw cycles.



Western Blotting

Image 1. Western blot analysis of extracts of various cell lines, using KLHL11 antibody (ABIN7268078) at 1:1000 dilution. Secondary antibody: HRP Goat Anti-Rabbit IgG (H+L) (ABIN1684268 and ABIN3020597) at 1:10000 dilution. Lysates/proteins: 25 µg per lane. Blocking buffer: 3 % nonfat dry milk in TBST. Detection: ECL Basic Kit (RM00020). Exposure time: 30s.