



[Go to Product page](#)

Datasheet for ABIN7268081
anti-KLHL8 antibody (AA 271-620)

4 Images

Overview

Quantity:	100 µL
Target:	KLHL8
Binding Specificity:	AA 271-620
Reactivity:	Human
Host:	Rabbit
Clonality:	Polyclonal
Conjugate:	This KLHL8 antibody is un-conjugated
Application:	Western Blotting (WB), Immunofluorescence (IF)

Product Details

Purpose:	KLHL8 Rabbit pAb
Immunogen:	Recombinant fusion protein containing a sequence corresponding to amino acids 271-620 of human KLHL8 (NP_065854.3).
Sequence:	AKEQIVKQNL KCRDLLDEAR NYHLHLSSRA VPDFEYSIRT TPRKHTAGVL FCVGGRRGGSG DPFRSIECY SINKNSWFFGP EMNSRRRHVG VISVEGKVYA VGGHDGNEHL GSMEMFDPLT NKWMMKASMN TKRRGIALAS LGGPIYAIGG LDDNTCFNDV ERYDIESDQW STVAPMNTPR GGVGSVALVN HVYAVGGNDG MASLSSVERY DPHLDKWIEV KEMGQRRAGN GVSKLHGCLY VGGGFDDNSP LSSVERYDPR SNKWDYVAAL TTPRGGVGIA TVMGKIFAVG GHNGNAYLNT VEAFDPVLNR WELVGSVSHC RAGAGVAVCS CLTSQIRDVG HGSNNVVD CM
Isotype:	IgG
Cross-Reactivity:	Human, Mouse, Rat

Product Details

Characteristics: Polyclonal Antibodies

Purification: Affinity purification

Target Details

Target: KLHL8

Alternative Name: KLHL8 ([KLHL8 Products](#))

Background: Substrate-specific adapter of a BCR (BTB-CUL3-RBX1 E3 ubiquitin ligase complex required for The BCR(KLHL8 ubiquitin ligase complex mediates ubiquitination and degradation of RAPSN.,KLHL8,Epigenetics & Nuclear Signaling,Cancer,Cell Biology & Developmental Biology,Cell Cycle,Cell differentiation,KLHL8

Molecular Weight: 60kDa/68kDa

Gene ID: 57563

UniProt: [Q9P2G9](#)

Application Details

Application Notes: WB,1:500 - 1:2000,IF,1:50 - 1:200

Restrictions: For Research Use only

Handling

Format: Liquid

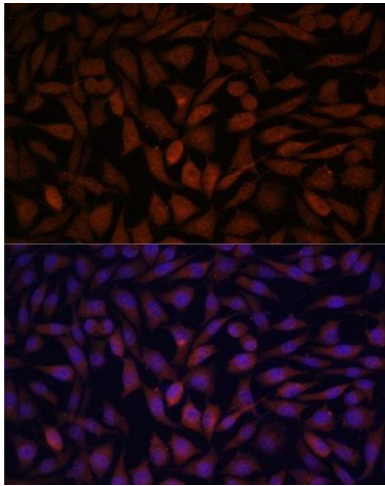
Buffer: PBS with 0.02 % sodium azide,50 % glycerol, pH 7.3.

Preservative: Sodium azide

Precaution of Use: This product contains Sodium azide: a POISONOUS AND HAZARDOUS SUBSTANCE which should be handled by trained staff only.

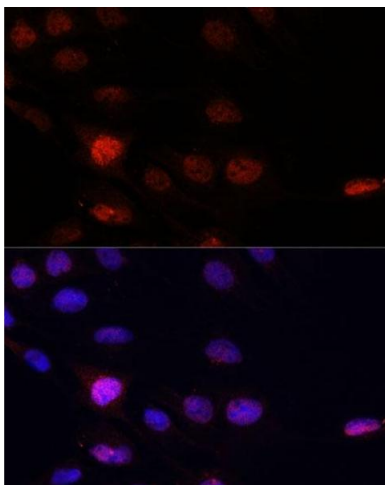
Storage: -20 °C

Storage Comment: Store at -20°C. Avoid freeze / thaw cycles.



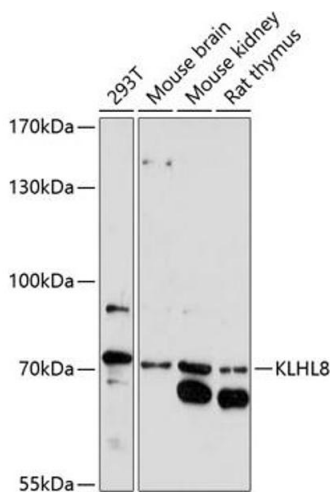
Immunofluorescence

Image 1. Immunofluorescence analysis of L929 cells using KLHL8 antibody (ABIN7268081) at dilution of 1:100. Blue: DAPI for nuclear staining.



Immunofluorescence

Image 2. Immunofluorescence analysis of C6 cells using KLHL8 antibody (ABIN7268081) at dilution of 1:100. Blue: DAPI for nuclear staining.



Western Blotting

Image 3. Western blot analysis of extracts of various cell lines, using KLHL8 antibody (ABIN7268081) at 1:1000 dilution. Secondary antibody: HRP Goat Anti-Rabbit IgG (H+L) (ABIN1684268 and ABIN3020597) at 1:10000 dilution. Lysates/proteins: 25 µg per lane. Blocking buffer: 3 % nonfat dry milk in TBST. Detection: ECL Basic Kit (RM00020). Exposure time: 90s.

Please check the [product details page](#) for more images. Overall 4 images are available for ABIN7268081.