



[Go to Product page](#)

Datasheet for ABIN7268088
anti-KRT12 antibody (AA 295-494)

1 Image

Overview

Quantity:	100 µL
Target:	KRT12
Binding Specificity:	AA 295-494
Reactivity:	Human
Host:	Rabbit
Clonality:	Polyclonal
Conjugate:	This KRT12 antibody is un-conjugated
Application:	Western Blotting (WB)

Product Details

Purpose:	Cytokeratin 12 (KRT12) Rabbit pAb
Immunogen:	Recombinant fusion protein containing a sequence corresponding to amino acids 295-494 of human Cytokeratin 12 (Cytokeratin 12 (KRT12)) (NP_000214.1).
Sequence:	TRLLNDMRAQ YETIAEQNRK DAEAWFIEKS GELRKEISTN TEQLQSSKSE VTDLRRRAFQN LEIELQSQLA MKKSLEDSLA EAEGDYCAQL SQVQLISNL EAQLLQVRAD AERQNVDHQR LLNVKARLEL EIETYRRLLD GEAQGDGLEE SLFVTDSKSQ AQSTDSSKDP TKTRKIKTVV QEMVNGEVVS SQVQEIEELM
Isotype:	IgG
Cross-Reactivity:	Mouse, Rat
Characteristics:	Polyclonal Antibodies

Product Details

Purification: Affinity purification

Target Details

Target: KRT12

Alternative Name: KRT12 ([KRT12 Products](#))

Background: KRT12 encodes the type I intermediate filament chain keratin 12, expressed in corneal epithelia. Mutations in this gene lead to Meesmann corneal dystrophy.,KRT12,K12,Signal Transduction,Cell Biology & Developmental Biology,Cytoskeleton,Intermediate Filaments,Neuroscience,Cell Type Marker,KRT12

Molecular Weight: 53kDa

Gene ID: 3859

UniProt: [Q99456](#)

Application Details

Application Notes: WB,1:500 - 1:2000

Restrictions: For Research Use only

Handling

Format: Liquid

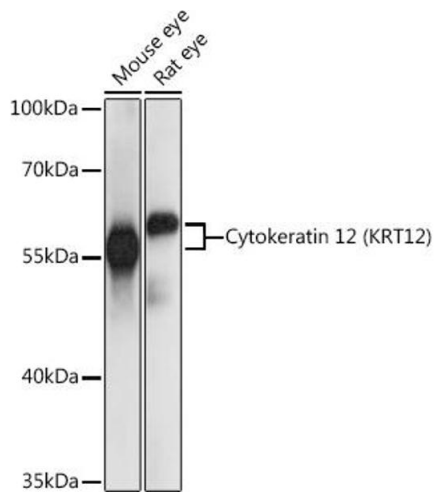
Buffer: PBS with 0.02 % sodium azide,50 % glycerol, pH 7.3.

Preservative: Sodium azide

Precaution of Use: This product contains Sodium azide: a POISONOUS AND HAZARDOUS SUBSTANCE which should be handled by trained staff only.

Storage: -20 °C

Storage Comment: Store at -20°C. Avoid freeze / thaw cycles.



Western Blotting

Image 1. Western blot analysis of extracts of various cell lines, using Cytokeratin 12 (Cytokeratin 12 (KRT12)) antibody (ABIN7268088) at 1:1000 dilution. Secondary antibody: HRP Goat Anti-Rabbit IgG (H+L) (ABIN1684268 and ABIN3020597) at 1:10000 dilution. Lysates/proteins: 25 µg per lane. Blocking buffer: 3 % nonfat dry milk in TBST. Detection: ECL Basic Kit (RM00020). Exposure time: 1s.