

Datasheet for ABIN7268099
anti-Cytokeratin 19 antibody

7 Images

[Go to Product page](#)

Overview

Quantity:	100 µL
Target:	Cytokeratin 19 (KRT19)
Reactivity:	Human
Host:	Rabbit
Clonality:	Monoclonal
Conjugate:	This Cytokeratin 19 antibody is un-conjugated
Application:	Western Blotting (WB), Immunohistochemistry (IHC)

Product Details

Purpose:	Cytokeratin 19 (KRT19) Rabbit mAb
Immunogen:	A synthesized peptide derived from human Cytokeratin 19 (KRT19) (KRT19)
Isotype:	IgG
Cross-Reactivity:	Human, Mouse, Rat
Characteristics:	Monoclonal Antibodies
Purification:	Affinity purification

Target Details

Target:	Cytokeratin 19 (KRT19)
Alternative Name:	KRT19 (KRT19 Products)
Background:	The protein encoded by this gene is a member of the keratin family. The keratins are

Target Details

intermediate filament proteins responsible for the structural integrity of epithelial cells and are subdivided into cytokeratins and hair keratins. The type I cytokeratins consist of acidic proteins which are arranged in pairs of heterotypic keratin chains. Unlike its related family members, this smallest known acidic cytokeratin is not paired with a basic cytokeratin in epithelial cells. It is specifically expressed in the periderm, the transiently superficial layer that envelopes the developing epidermis. The type I cytokeratins are clustered in a region of chromosome 17q12-q21. [provided by RefSeq, Jul 2008],CK19,K19,K1CS,KRT19,Cell Biology & Developmental Biology,Cytoskeleton,Cytoskeleton_Intermediate Filaments,Extracellular Matrix,Extracellular Matrix_Cytokeratin,Extracellular Matrix_Keratin,Signal Transduction,Stem Cells,KRT19

Molecular Weight: 40kDa

Gene ID: 3880

UniProt: [P08727](#)

Application Details

Application Notes: WB,1:500 - 1:2000,IHC,1:50 - 1:200

Restrictions: For Research Use only

Handling

Format: Liquid

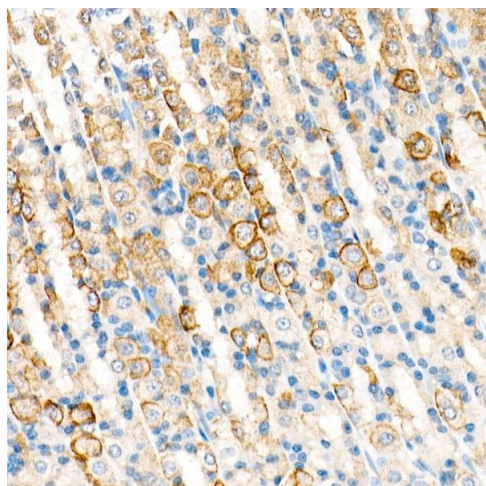
Buffer: PBS with 0.02 % sodium azide,0.05 % BSA,50 % glycerol, pH 7.3.

Preservative: Sodium azide

Precaution of Use: This product contains Sodium azide: a POISONOUS AND HAZARDOUS SUBSTANCE which should be handled by trained staff only.

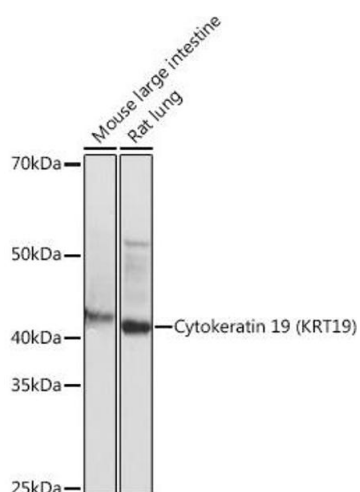
Storage: -20 °C

Storage Comment: Store at -20°C. Avoid freeze / thaw cycles.



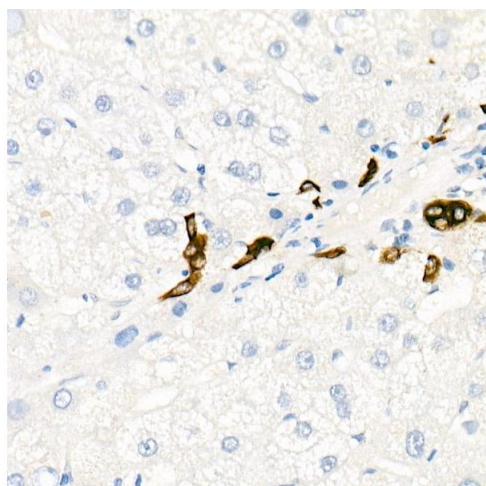
Immunohistochemistry

Image 1. Immunohistochemistry of paraffin-embedded Rat stomach using Cytokeratin 19 (KRT19) antibody (ABIN7268099) at dilution of 1:100 (40x lens). Perform microwave antigen retrieval with 10 mM PBS buffer pH 7.2 before commencing with IHC staining protocol.



Western Blotting

Image 2. Western blot analysis of extracts of various cell lines, using Cytokeratin 19 (KRT19) (KRT19) antibody (ABIN7268099) at 1:1000 dilution. Secondary antibody: HRP Goat Anti-Rabbit IgG (H+L) (ABIN1684268 and ABIN3020597) at 1:10000 dilution. Lysates/proteins: 25 µg per lane. Blocking buffer: 3 % nonfat dry milk in TBST. Detection: ECL Basic Kit (RM00020). Exposure time: 10s.



Immunohistochemistry

Image 3. Immunohistochemistry of paraffin-embedded Human liver (negative control sample) using Cytokeratin 19 (KRT19) antibody (ABIN7268099) at dilution of 1:100 (40x lens). Perform microwave antigen retrieval with 10 mM PBS buffer pH 7.2 before commencing with IHC staining protocol.

Please check the [product details page](#) for more images. Overall 7 images are available for ABIN7268099.